

U.S. PUBLIC LAND SURVEY MONUMENT RECORD - GRANT COUNTY, WI

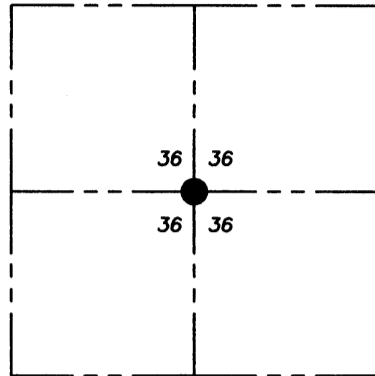
Section 36, Town 3 North Range 4 West, Town of Waterloo

CERTIFICATE:

I, Aaron J. Austin, Wisconsin Professional Land Surveyor, do hereby certify that the corner location on this record is determined by me and/or under my direct supervision and that this U.S. Public Land Survey Monument Record is correct and complete to the best of my knowledge and belief.

Dated this 17th day of November, 2015.

Aaron J. Austin
 Aaron J. Austin, S 2922
 LAND SURVEYOR



● = CORNER LOCATION

HISTORY OF CORNER ESTABLISHMENT:

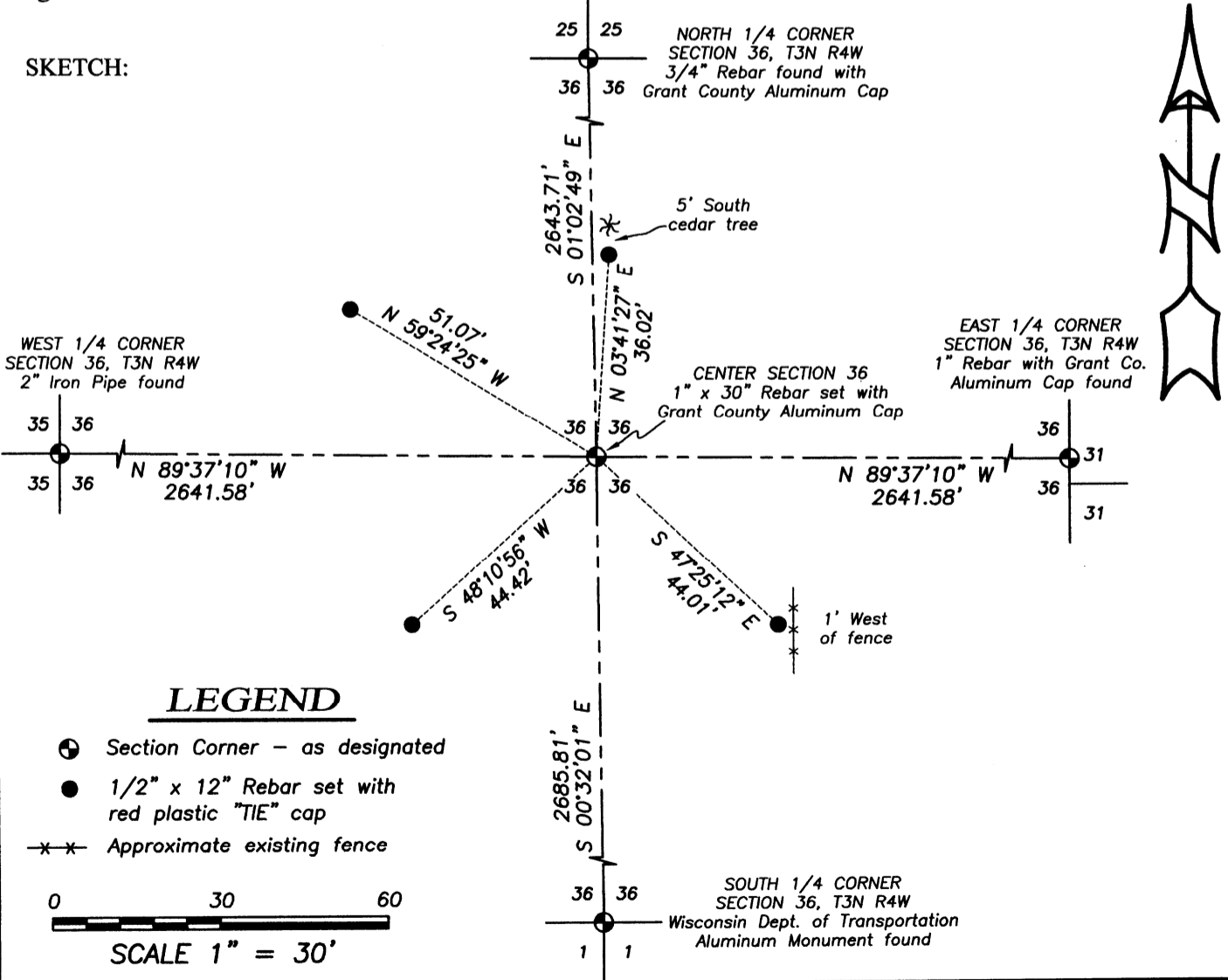
Corner was not set with original government survey.
 1891-Charles Sampson set the corner on a Survey filed in Book D, Page 195.

DESCRIPTION OF CORNER EVIDENCE FOUND:

The survey filed in Book D, Page 195 established the center of Section equidistant between the East 1/4 corner and the West 1/4 corner of Section 36. I would like to note that the actual Book D, Page 195 has some illegible labeling of the heading of the Township, Range and Section. This Survey location was verified with an 1895 Atlas of Grant County. I reset the corner equidistant and online between the East and West 1/4 corners and verified this location with E.D.M. and G.P.S. methods.

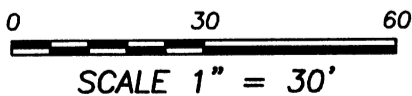
DESCRIPTION OF CORNER AND WITNESS MONUMENTS, references and accessories used to perpetuate the original or re-established location of this corner. Witnesses to corner location Shane Austin.

SKETCH:



LEGEND

- ⊕ Section Corner - as designated
- 1/2" x 12" Rebar set with red plastic "TIE" cap
- x-x- Approximate existing fence



Austin Engineering LLC
 austinengineeringllc.com

4211 HWY 81 E, LANCASTER, WI 53813
 PHONE: 608-723-6363 FAX: 608-723-6702

JOB NO: 15s078
 H:\15s078
 H:\TIE\T3NR4W\119.5

FIELDBOOK: TDSR
 DRAWN BY: AJ AUSTIN
 CREW: SW AUSTIN

119.5

NOV 25 2015