

U.S. PUBLIC LAND SURVEY MONUMENT RECORD - GRANT COUNTY, WI

Section 34, Town 3 North Range 4 West, Town of Waterloo (a)

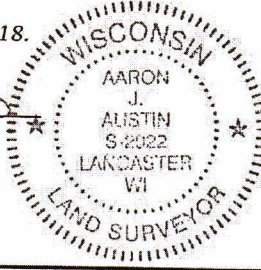
NOTE: This form is intended and designed to fulfill all requirements of the Wisconsin Administrative Code Chapter A-E 7.08, U.S. Public Land Survey Monument Record (3) (a) (b) (c) (d) (e) (f) (g) (h) (i).

CERTIFICATE: (i)

I, Aaron J. Austin, Wisconsin Professional Land Surveyor, do hereby certify that the corner location on this record was determined by me and/or under my direct supervision and that this U.S. Public Land Survey Monument Record is correct and complete to the best of my knowledge and belief.

Dated this 12th day of March, 2018.

Aaron J. Austin
Aaron J. Austin, S-2922



● = CORNER LOCATION

Grant County Coordinates:
NAD 83 (2011)
Northing: 466,028.79
Easting: 789,634.80

HISTORY OF CORNER ESTABLISHMENT:

L. Lyon originally set the corner in 1833. F. Crook filed a Survey Monument Record in 1989.

DESCRIPTION OF CORNER EVIDENCE FOUND: (b) (f) (g) (h)

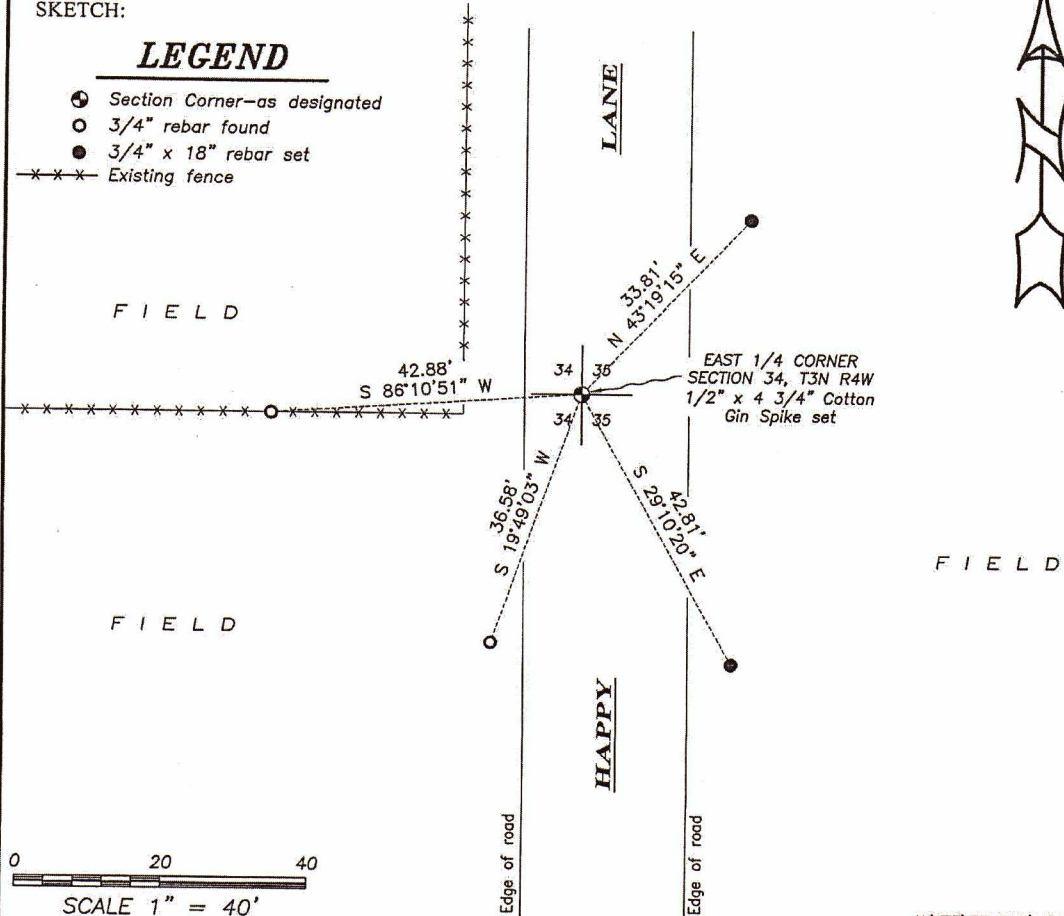
I found 2 witness monuments set by Crook and utilized those to to set the monument at Crook's location. I set two additional witness monuments after I verified it's location with G.P.S. and E.D.M. methods.

DESCRIPTION OF CORNER AND WITNESS MONUMENTS, references and accessories used to perpetuate the original or re-established location of this corner. (c) (d) (e)
Witnesses to corner location Shane Austin, Owen Austin. Drawn by Owen Austin.

SKETCH:

LEGEND

- Section Corner—as designated
- 3/4" rebar found
- 3/4" x 18" rebar set
- x-x-x- Existing fence



U. S. PUBLIC LAND SURVEY MONUMENT RECORD

INSTRUCTIONS: This record shall show the location of the corner and shall include all of the following nine elements (a through i).

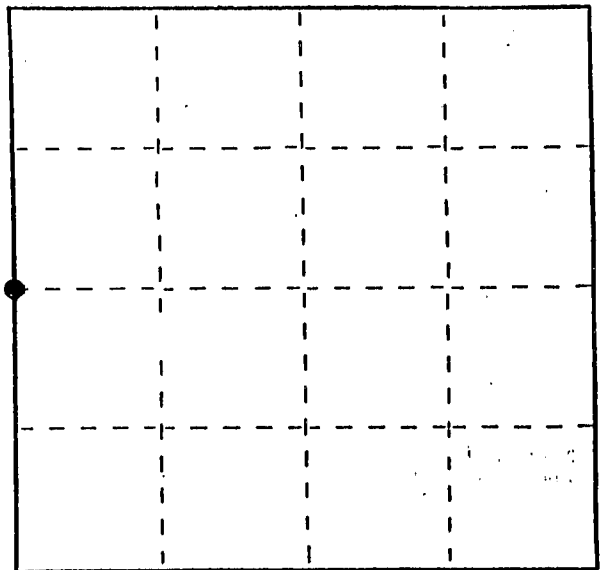
- (a) Identify the corner by reference to the U.S. public land survey system.
 ● = Corner monument restored.

W1/4 Corner of Section 35

T 3 N R 4 W

Town of Waterloo

Grant Co., Wis.



Section 35 T3N R4W

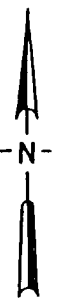
- (b) Describe any record evidence, monument evidence, occupational evidence, testimonial evidence or any other material evidence you considered, and whether the monument was found or placed.
 Original by Lucius Lyon in the 1st 1/4 of 1833. Found no further record.

Established corner on a line of occupation from the center of Section 34, Easterly to this corner, and the existing fenceline along a portion of the west line of the SW1/4. This fits well with the placement of the SW corner (see SW corner tie sheet), which was also placed using recorded deed calls. EDM traverse verifies the location. A thorough search with a backhoe failed to provide any evidence.

- (c) In the plan view drawing below, provide reference ties to at least 4 witness monuments, or, if the location is within a municipality, to at least 2 witness monuments. (Witness monuments shall be made of concrete, natural stone, iron or other equally durable material.)
 Describe witness monuments.

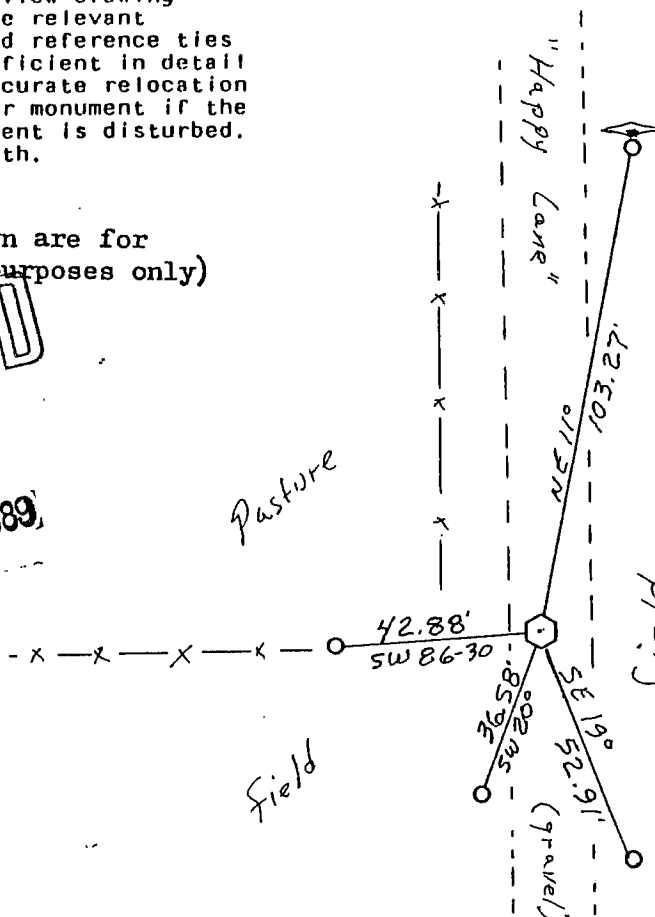
- (d) Show a plan view drawing depicting the relevant monuments and reference ties which is sufficient in detail to enable accurate relocation of the corner monument if the corner monument is disturbed. Indicate north.

Scale: 1" = 40'



(Bearings shown are for orientation purposes only)

RECEIVED
 SEP 13 1989



○ = 3/4" Rebar set

Corner is Wis. Dept. of Transportation 2" X 30" aluminum monument set 4" below road surface

Sign and post set in the fenceline on west side of road.

(e) Describe any material discrepancy between the location of the corner as restored or reestablished and the location of that corner as previously restored or reestablished by distance and direction. Show the discrepancy on the plan view drawing under (d), above. Show the distances between the corner as previously restored or reestablished and (1) the corner as restored or reestablished, and (2) to at least 2 of the witness monuments shown on the drawing in (d), above.

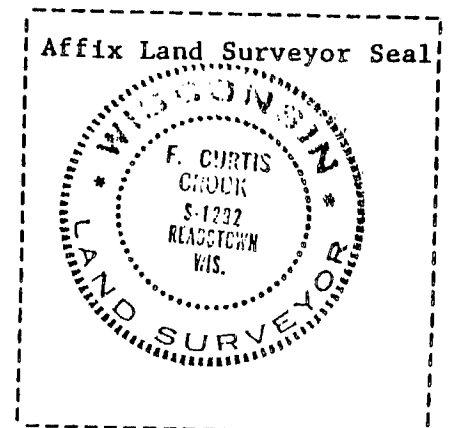
NONE

(f) Was the corner restored through acceptance of (1) an obliterated evidence location, or, (2) a found perpetuated location?

Obliterated evidence location

(g&h) Was the corner reestablished through lost corner proportionate methods? If so, show the method, including the directions and distances to other public land survey corners used as evidence or used for proportioning in determining the corner location?

No



(1) I, F. Curtis Crook
(type or print name) certify that the corner location shown on this record was determined by me or under my direction and control and that this U.S. Public Land Survey Monument Record is correct and complete to the best of my knowledge and belief.

F. Curtis Crook

5-25-89