

U.S. PUBLIC LAND SURVEY MONUMENT RECORD - GRANT COUNTY, WI

Section 33, Town 3 North Range 4 West, Town of Waterloo (a)

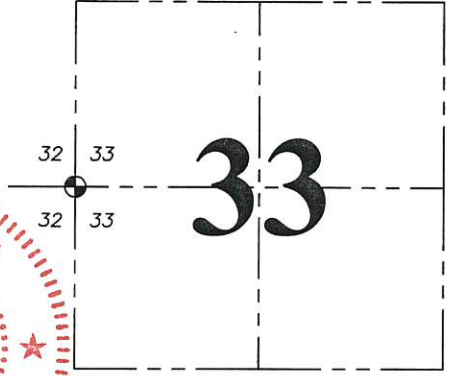
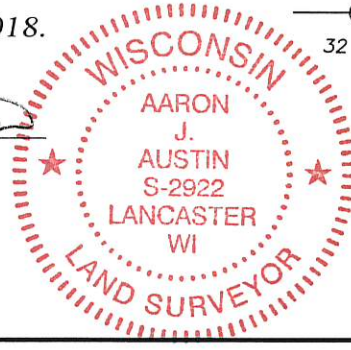
NOTE: This form is intended and designed to fulfill all requirements of the Wisconsin Administrative Code Chapter A-E 7.08, U.S. Public Land Survey Monument Record (3) (a) (b) (c) (d) (e) (f) (g) (h) (i).

CERTIFICATE: (i)

I, Aaron J. Austin, Wisconsin Professional Land Surveyor, do hereby certify that the corner location on this record was determined by me and/or under my direct supervision and that this U.S. Public Land Survey Monument Record is correct and complete to the best of my knowledge and belief.

Dated this 8th day of February, 2018.

Aaron J. Austin
Aaron J. Austin, S-2922



● = CORNER LOCATION

HISTORY OF CORNER ESTABLISHMENT:

Lucius Lyon set the original corner in 1833.
Larry Austin found a 2" iron pipe at the corner and prepared a Survey Monument Record dated 3-22-1994.

DESCRIPTION OF CORNER EVIDENCE FOUND: (b) (f) (g) (h)

I found the 2" iron pipe as previously tied out by Larry Austin. I set four new witness corners after I verified the corner's location with G.P.S. and E.D.M. methods.

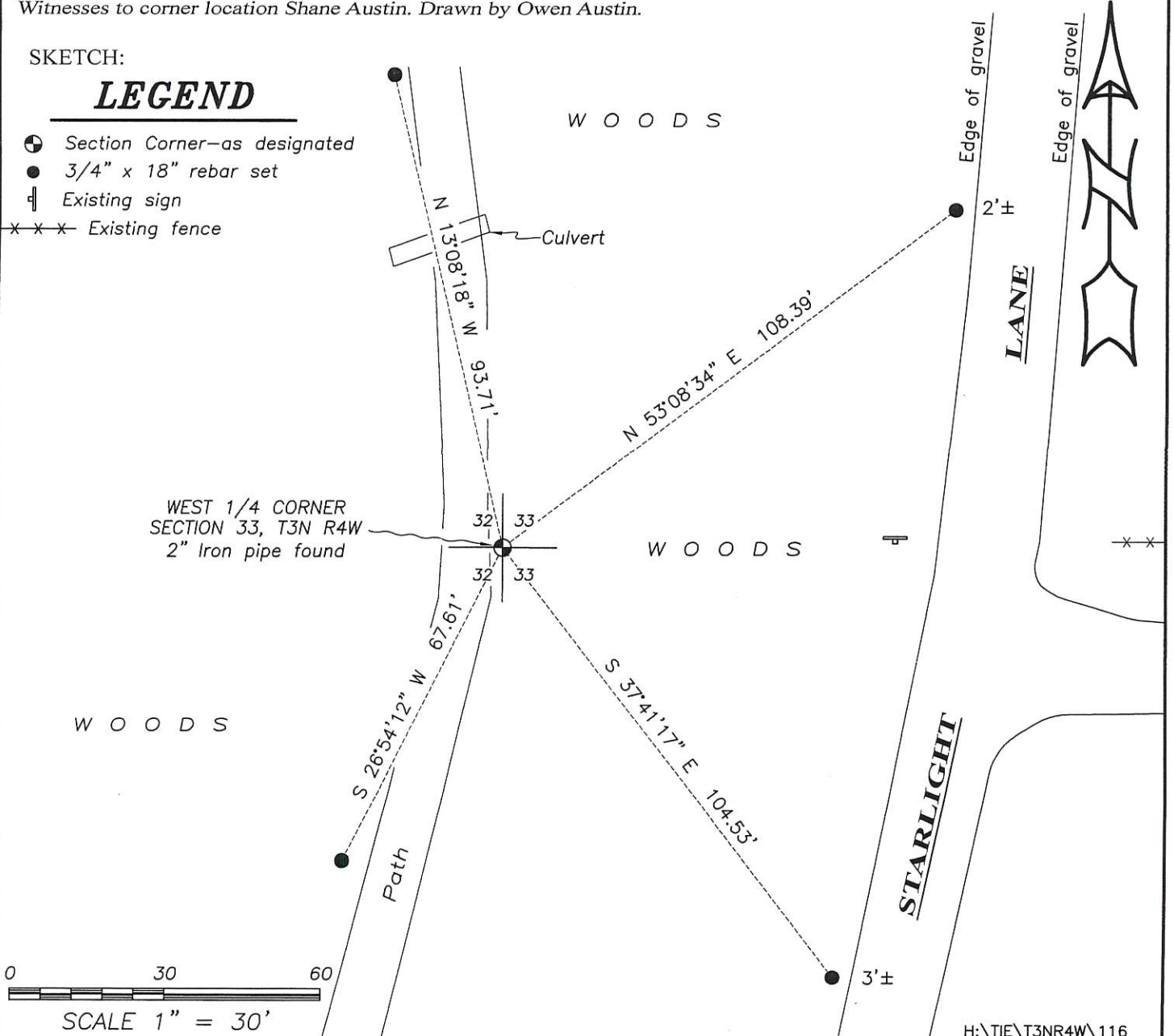
DESCRIPTION OF CORNER AND WITNESS MONUMENTS, references and accessories used to perpetuate the original or re-established location of this corner. (c) (d) (e)

Witnesses to corner location Shane Austin. Drawn by Owen Austin.

SKETCH:

LEGEND

- Section Corner—as designated
- 3/4" x 18" rebar set
- ⊥ Existing sign
- x x x Existing fence



GRANT COL NTY

Survey Monument Record

TYPE OF MONUMENT 2" IRON PIPE FOUND

STATE PLANE COORDINATES: N _____
E _____

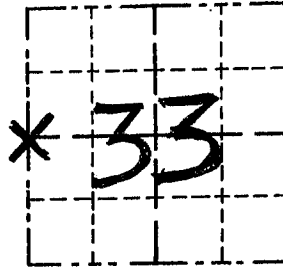
ELEVATION — M.S.L. DATUM: _____

THETA ANGLE: _____

FIELD BOOK: 9507

PAGE 7

CORNER NO. 116
SECTION 33
TOWN 3 N
RANGE 4 W



LOCATION
(Indicated by "X")

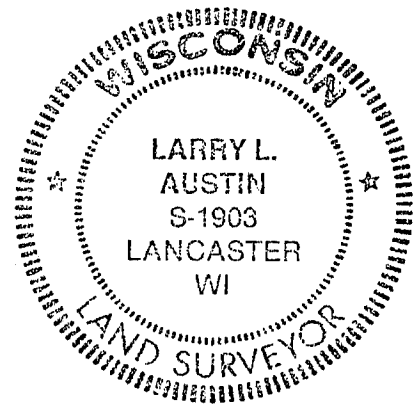
BASIS FOR MONUMENT LOCATION

(Use reverse side if necessary)

Show info such as: History of corner, with reference to Vol. and pg., dates, surveyor; exact description of monument replaced; if location computed, by taped or EDM traverse; landowner, remarks, etc.

SEAL:

ORIGINAL CORNER SET BY
LUCIUS LYON IN 1833;
CORNER RE-ESTABLISHED BY
BOWDEN IN 1980; I ACCEPTED
THIS LOCATION AFTER VERI-
FICATION BY EDM TRAVERSE



CERTIFIED CORRECT

Larry L. Austin
Registered Land Surveyor

DATE: 3/22/94

TIE SKETCH

Show at least three (3) ties and monument

- LEGEND
- 2" IRON PIPE FOUND
 - 1" x 12" (MIN. LENGTH)
SET AS TIES
 - *** EXISTING FENCE

