

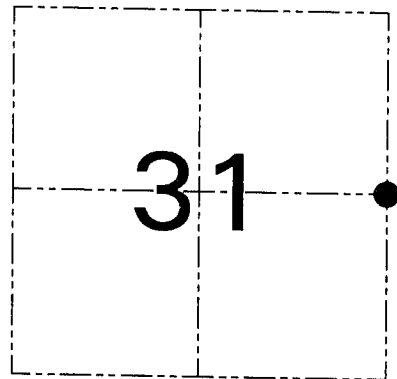
U.S. PUBLIC LAND SURVEY MONUMENT RECORD - GRANT COUNTY, WI
 Section 31, Town 3 North Range 4 West, Town of Waterloo

CERTIFICATE

I, Larry L. Austin, do hereby certify that the corner location on this record was determined by me and/or under my direct supervision and that this U.S. public land survey monument record is correct and complete to the best of my knowledge and belief.

Dated this 29th day of March, 2001

Larry L. Austin
 Larry L. Austin S-1903



● = CORNER LOCATION

HISTORY OF CORNER ESTABLISHMENT

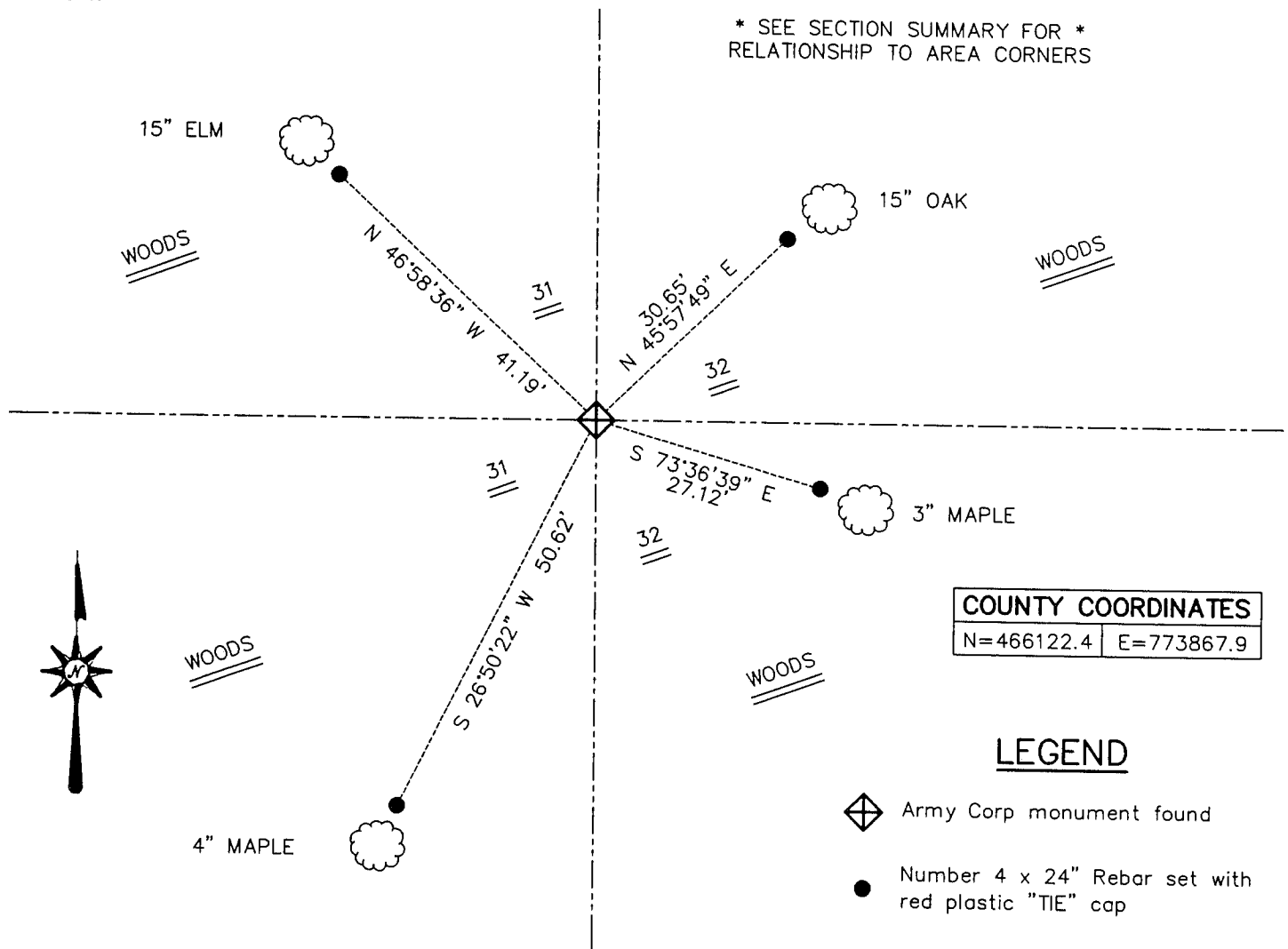
Corner was originally set in 1833 by Lucius Lyon. The US Army Corp tied to the corner with no mention of monument. In 1980 Bowden found a 1.5" Iron pipe with a brass cap.

DESCRIPTION OF CORNER EVIDENCE FOUND

I found the Iron pipe with the brass cap and accepted it's location after an EDM & GPS traverse of the area.

DESCRIPTION OF CORNER AND WITNESS MONUMENTS, references and accessories used to perpetuate the original or re-established location of this corner. Witnesses to the corner location Bobby Sedgwick & Shelby Blindert.

SKETCH:



COUNTY COORDINATES	
N=466122.4	E=773867.9

LEGEND

- Army Corp monument found
- Number 4 x 24" Rebar set with red plastic "TIE" cap

SKETCH NOT TO SCALE

AUSTIN ENGINEERING, LLC

4211 HWY 81 EAST, LANCASTER, WI 53813
 PHONE 608-723-6363 FAX 608-723-6702

FIELDBOOK: SDR33, 2004, 2015,
 G:\T3NR4W\31 2017, 2034
 C:\SWA\TIE\T3NR4W\115
 CREW: BS-SB-SA-TF

DRAWN BY: SW AUSTIN
 APPROVED: LL AUSTIN

CORNER NUMBER 115