

# U.S. PUBLIC LAND SURVEY MONUMENT RECORD - GRANT COUNTY, WI

Section 32, Town 3 North Range 4 West, Town of Waterloo (a)

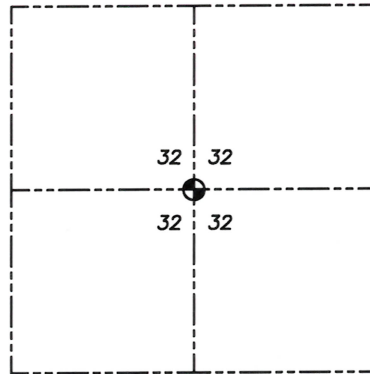
NOTE: This form is intended and designed to fulfill all requirements of the Wisconsin Administrative Code Chapter A-E 7.08, U.S. Public Land Survey Monument Record (3) (a) (b) (c) (d) (e) (f) (g) (h) (i).

**CERTIFICATE:** (i)

I, Aaron J. Austin, Wisconsin Professional Land Surveyor, do hereby certify that the corner location on this record was determined by me and/or under my direct supervision and that this U.S. Public Land Survey Monument Record is correct and complete to the best of my knowledge and belief.

Dated this 31st day of December, 2024.

Aaron J. Austin  
Aaron J. Austin, S-2922



⊙ = CORNER LOCATION

Grant County Coordinates:  
NAD 83 (2011)  
Northing: 466,104.24  
Easting: 776,483.87

HISTORY OF CORNER ESTABLISHMENT:

Corner was not set with the Original Government Survey.  
Bruce Bowden set a 3/4" Rebar on a C.S.M. #157 dated 7-7-1980.  
I found a 1" Iron Pipe on a Plat of Survey filed in Book 31, Page 13 dated 3-7-2012.

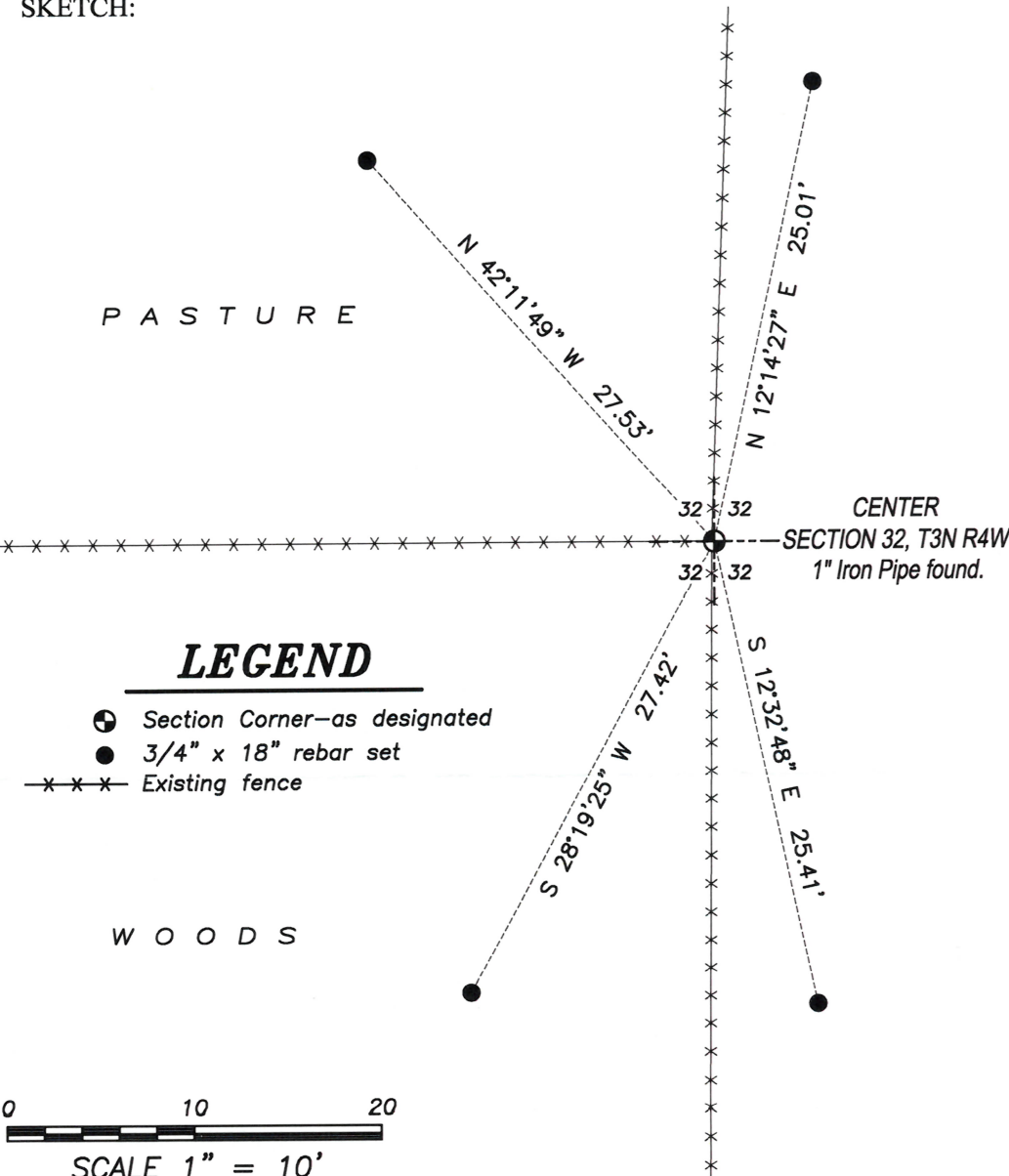
DESCRIPTION OF CORNER EVIDENCE FOUND: (b) (f) (g) (h)

I found a 1" Iron Pipe of record. I set four witness corners after I verified the Monument's location with G.P.S. and E.D.M. methods.

DESCRIPTION OF CORNER AND WITNESS MONUMENTS, references and accessories used to perpetuate the original or re-established location of this corner. (c) (d) (e)

Witnesses to corner location Owen Austin.  
Drawn by: Owen Austin.

SKETCH:



## LEGEND

- ⊙ Section Corner—as designated
- 3/4" x 18" rebar set
- x-x-x- Existing fence



C R P

C R P

