

34110

U.S. PUBLIC LAND SURVEY MONUMENT RECORD - GRANT COUNTY, WI

Section 32, Town 3 North Range 4 West, Town of Waterloo (a)

NOTE: This form is intended and designed to fulfill all requirements of the Wisconsin Administrative Code Chapter A-E 7.08, U.S. Public Land Survey Monument Record (3) (a) (b) (c) (d) (e) (f) (g) (h) (i).

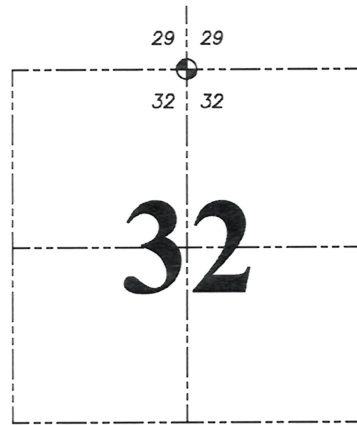
CERTIFICATE: (i)

I, Aaron J. Austin, Wisconsin Professional Land Surveyor, do hereby certify that the corner location on this record was determined by me and/or under my direct supervision and that this U.S. Public Land Survey Monument Record is correct and complete to the best of my knowledge and belief.

Dated this 31st day of December, 2024.

Aaron J Austin

Aaron J. Austin, S-2922



⊙ = CORNER LOCATION

Grant County Coordinates:
NAD 83 (2011)
Northing: 468,751.18
Easting: 776,490.47

HISTORY OF CORNER ESTABLISHMENT:

Original corner was set in 1833 by Lucius Lyon.
Larry Austin set a 1" Rebar with a Grant County Aluminum Cap and prepared a Survey Monument Record dated 7-28-2000.

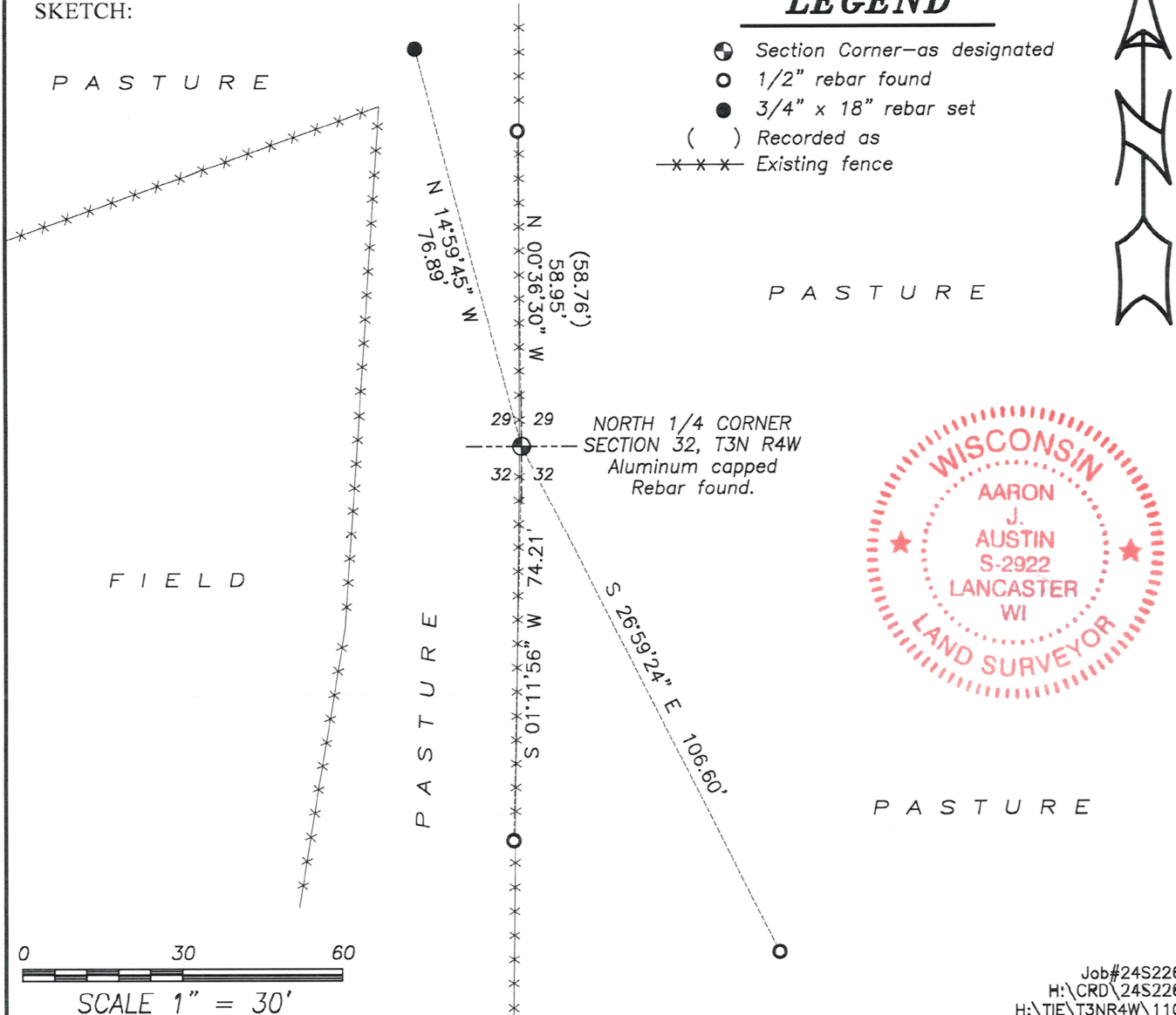
DESCRIPTION OF CORNER EVIDENCE FOUND: (b) (f) (g) (h)

I found the Aluminum Capped Rebar and three witness corners Larry set. I set one witness corner after I verified the Monument's location with G.P.S. and E.D.M. methods.

DESCRIPTION OF CORNER AND WITNESS MONUMENTS, references and accessories used to perpetuate the original or re-established location of this corner. (c) (d) (e)

Witnesses to corner location Owen Austin.
Drawn by: Owen Austin.

SKETCH:



GRANT COUNTY CERTIFIED LAND CORNER

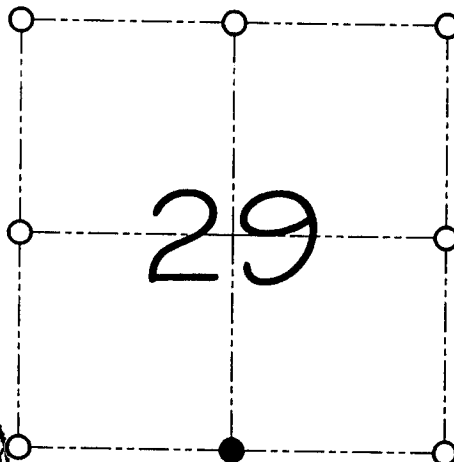
CORNER NUMBER 110

CERTIFICATE:

I, Larry L. Austin, do hereby certify that on the 23rd day of June, 2000, I found evidence of the South 1/4 corner of Section 29, Town 3 North, Range 4 West, of the 4th Principal Meridian, and I re-established said corner according to the Wisconsin statutes as shown and described hereon.

Dated this 28th day of July, 2000

Larry L. Austin
Larry L. Austin S-1903



● = CORNER LOCATION
SOUTH 1/4 CORNER OF SECTION 29, T 3 N R 4 W TOWN OF WATERLOO

HISTORY OF ORIGINAL CORNER ESTABLISHMENT:

Corner was originally set in 1833 by Lucius Lyon.
In 1855 Overton tied to the corner. In 1881 J.C. Scott tied to the corner.

DESCRIPTION OF CORNER EVIDENCE FOUND:

I reset the corner online between the Southwest and Southeast corners of Section 29 for Northing. Easting was established by a North-South fence. Verified this location using EDM & GPS methods.

DESCRIPTION OF CORNER AND WITNESS MONUMENTS, references and accessories used to perpetuate the original or re-established location of this corner

WITNESS TO THE CORNER LOCATION: SHANE AUSTIN & JERRY SPEILMAN

SKETCH:

