

**U.S. PUBLIC LAND SURVEY MONUMENT RECORD - GRANT COUNTY, WI**

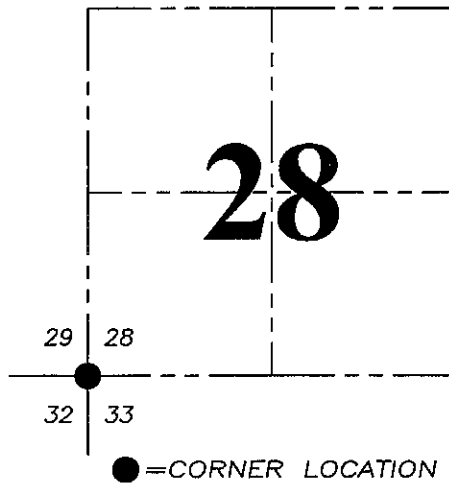
Section 28, Town 3 North Range 3 West, Town of Potosi

**CERTIFICATE:**

I, Aaron J. Austin, Wisconsin Professional Land Surveyor, do hereby certify that the corner location on this record was determined by me and/or under my direct supervision and that this U.S. Public Land Survey Monument Record is correct and complete to the best of my knowledge and belief.

Dated this 30th day of April, 2015.

*Aaron J. Austin*  
 Aaron J. Austin, S-2922  
 LAND SURVEYOR  
 LANCASTER, WI



HISTORY OF CORNER ESTABLISHMENT:

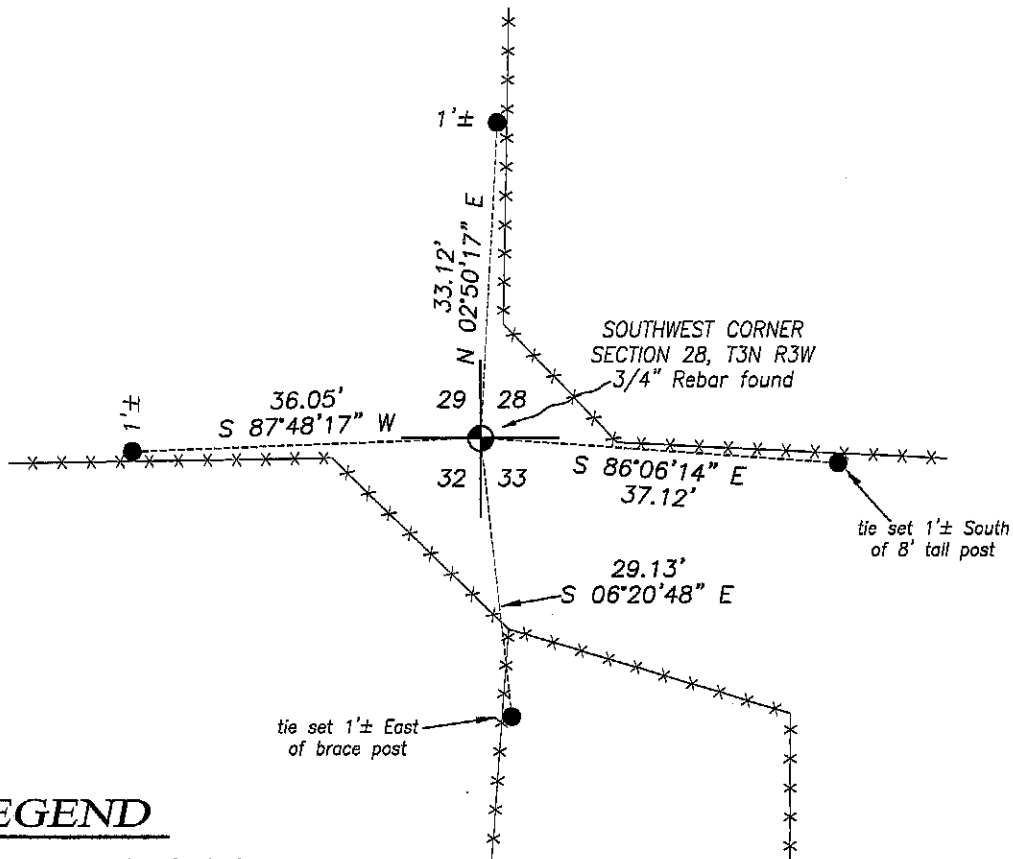
1833 Robert Clark set original corner.  
 1850- George Struntz tied to the corner on a Survey in Book B, Page 194.  
 1850-George Struntz tied to the corner on a Survey in Book B, Page 195.  
 1991-Sean Walsh reset the corner and filed a Government Corner Record for this corner on a Survey filed in Book P, Page 123.  
 Several recent surveys have used Walsh's corner location.

DESCRIPTION OF CORNER EVIDENCE FOUND:

I found and accepted a 3/4" rebar set by Sean Walsh. I was not able to recover the Witness Corners set by Walsh. I reset four new Witness Corners as shown hereon. This corner was verified by E.D.M. and G.P.S. methods.

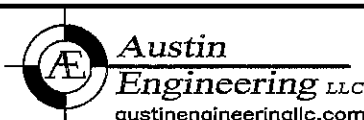
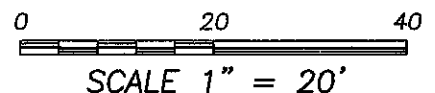
DESCRIPTION OF CORNER AND WITNESS MONUMENTS, references and accessories used to perpetuate the original or re-established location of this corner. Witnesses to corner location Shane Austin.

SKETCH:



**LEGEND**

- Section Corner—as designated
- Number 4 x 12" Rebar set with red plastic "TIE" cap
- x-x- Existing Fence



4211 HWY 81 E, LANCASTER, WI 53813  
 PHONE: 608-723-6363 FAX: 608-723-6702

JOB NO: 15s037  
 H:\CRD\15s037  
 H:\TIE\T3NR3W\109

FIELDBOOK: TDSR  
 DRAWN BY: AJ AUSTIN  
 CREW: SW AUSTIN

# GRANT COUNTY CERTIFIED LAND CORNER

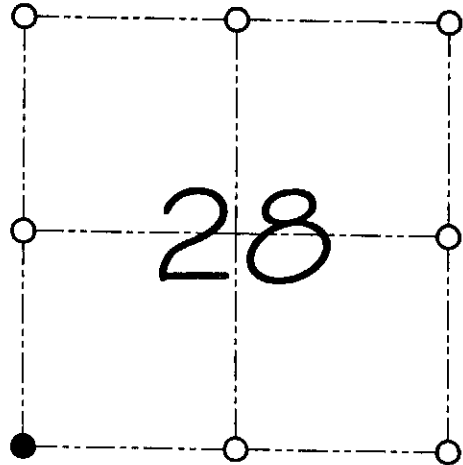
CORNER NUMBER 109

**CERTIFICATE:**

I, Larry L. Austin, do hereby certify that on the 23rd day of June, 2000, I found evidence of the Southwest corner of Section 28, Town 3 North, Range 4 West, of the 4th Principal Meridian, and I re-established said corner according to the Wisconsin statutes as shown and described hereon.

Dated this 28th day of July, 2000

*Larry L. Austin*  
Larry L. Austin S-1903



● = CORNER LOCATION

SOUTHWEST 1/4 CORNER OF  
SECTION 28, T 3 N R 4 W  
TOWN OF WATERLOO

**HISTORY OF ORIGINAL CORNER ESTABLISHMENT:**

Corner was originally set in 1833 by Lucius Lyon. In 1855 Overton tied to the corner. In 1881 J.C. Scott tied to the corner.

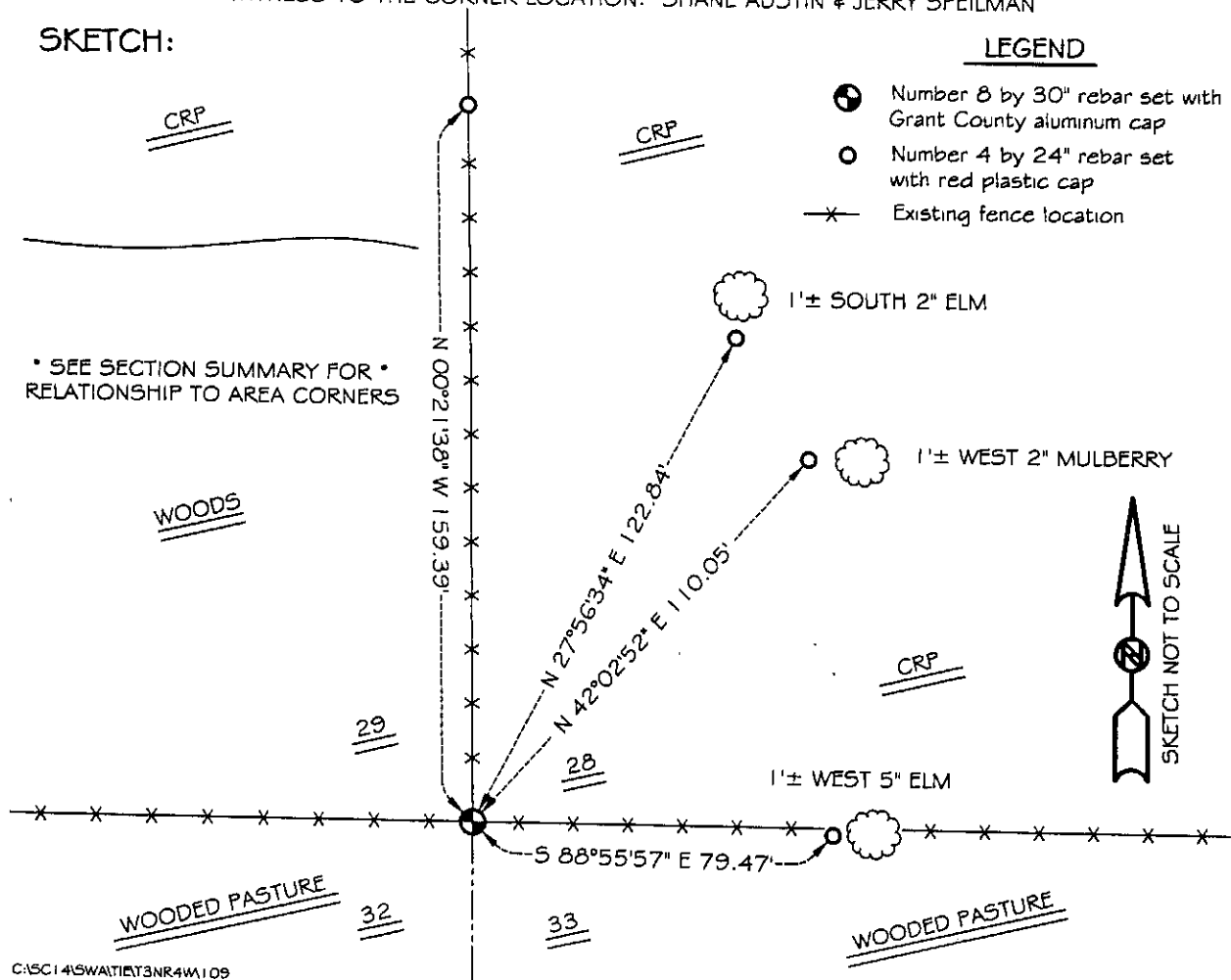
**DESCRIPTION OF CORNER EVIDENCE FOUND:**

I found an existing fence corner and accepted its location after an EDM & GPS traverse of the area.

**DESCRIPTION OF CORNER AND WITNESS MONUMENTS, references and accessories used to perpetuate the original or re-established location of this corner**

WITNESS TO THE CORNER LOCATION: SHANE AUSTIN & JERRY SPEILMAN

**SKETCH:**



\* SEE SECTION SUMMARY FOR \*  
RELATIONSHIP TO AREA CORNERS

**LEGEND**

- Number 8 by 30" rebar set with Grant County aluminum cap
- Number 4 by 24" rebar set with red plastic cap
- × Existing fence location