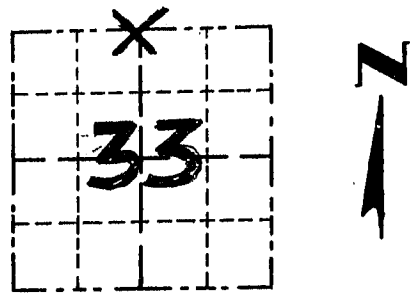


GRANT COUNTY

Survey Monument Record

TYPE OF MONUMENT COUNTY ALUMINUM MON.
 STATE PLANE COORDINATES: N _____
 E _____
 ELEVATION — M.S.L. DATUM: _____
 THETA ANGLE: _____
 FIELD BOOK: 9507
 PAGE 7

CORNER NO. 108
 SECTION 33
 TOWN 3 N
 RANGE 4 W
N 1/4 COR.



LOCATION
(Indicated by "X")

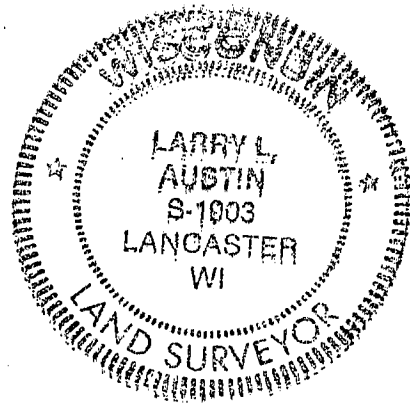
BASIS FOR MONUMENT LOCATION

(Use reverse side if necessary)

Show info such as: History of corner, with reference to Vol. and pg., dates, surveyor; exact description of monument replaced; if location computed, by taped or EDM traverse; landowner, remarks, etc.

ORIGINAL CORNER SET BY LUCIUS LYON IN 1833; CORNER RE-ESTABLISHED AT OCCUPIED LOCATION & VERIFIED BY EDM TRAVERSE OF THE AREA.

SEAL:



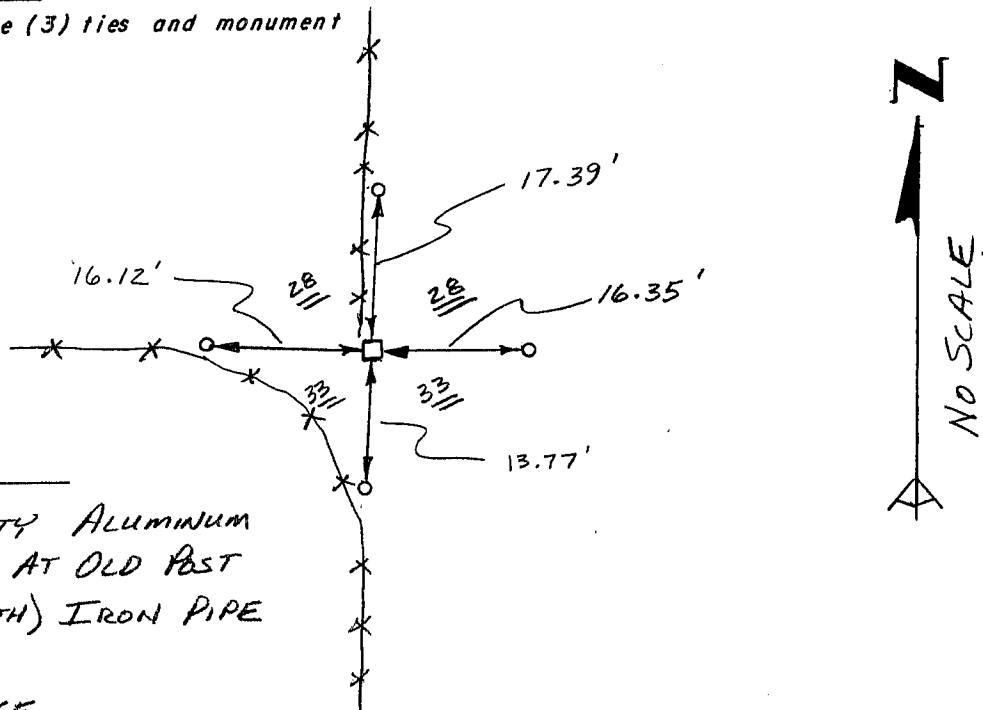
CERTIFIED CORRECT

Larry L. Austin
 Registered Land Surveyor

DATE: 3/22/95

TIE SKETCH

Show at least three (3) ties and monument



LEGEND

- GRANT COUNTY ALUMINUM MONUMENT SET AT OLD POST
- 1" x 12" (MIN. LENGTH) IRON PIPE SET AS TIES
- ✕✕ EXISTING FENCE

