

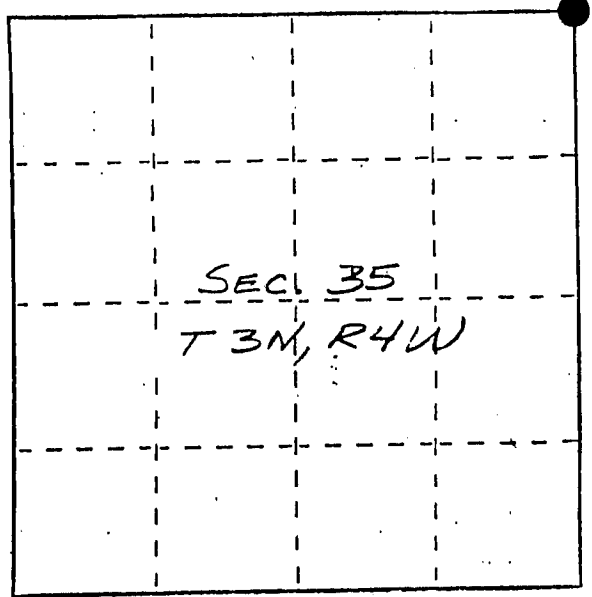
U. S. PUBLIC LAND SURVEY MONUMENT RECORD

INSTRUCTIONS: This record shall show the location of the corner and shall include all of the following nine elements (a through i).

- (a) Identify the corner by reference to the U.S. public land survey system.

● = Corner monument restored.

NE CORNER, SEC. 35
T3N, R4W, WATERLOO
TWP., GRANT CO. WISC.



- (b) Describe any record evidence, monument evidence, occupational evidence, testimonial evidence or any other material evidence you considered, and whether the monument was found or placed.

MONUMENT SET FROM EXISTING FIELD EVIDENCE &
REMAINS OF A FOUND BEARING TREE; LOCATION WAS VERIFIED
BY SURVEY BY MORROW-1941; NO OTHER RECORD OF CORNER
SINCE ORIGINAL GOVERNMENT SURVEY; LOCATION VERIFIED
BY AN EDM TRAVERSE OF THE AREA.

- (c) In the plan view drawing below, provide reference ties to at least 4 witness monuments, or, if the location is within a municipality, to at least 2 witness monuments. (Witness monuments shall be made of concrete, natural stone, iron or other equally durable material.) Describe witness monuments.

- (d) Show a plan view drawing depicting the relevant monuments and reference ties which is sufficient in detail to enable accurate relocation of the corner monument if the corner monument is disturbed. Indicate north.

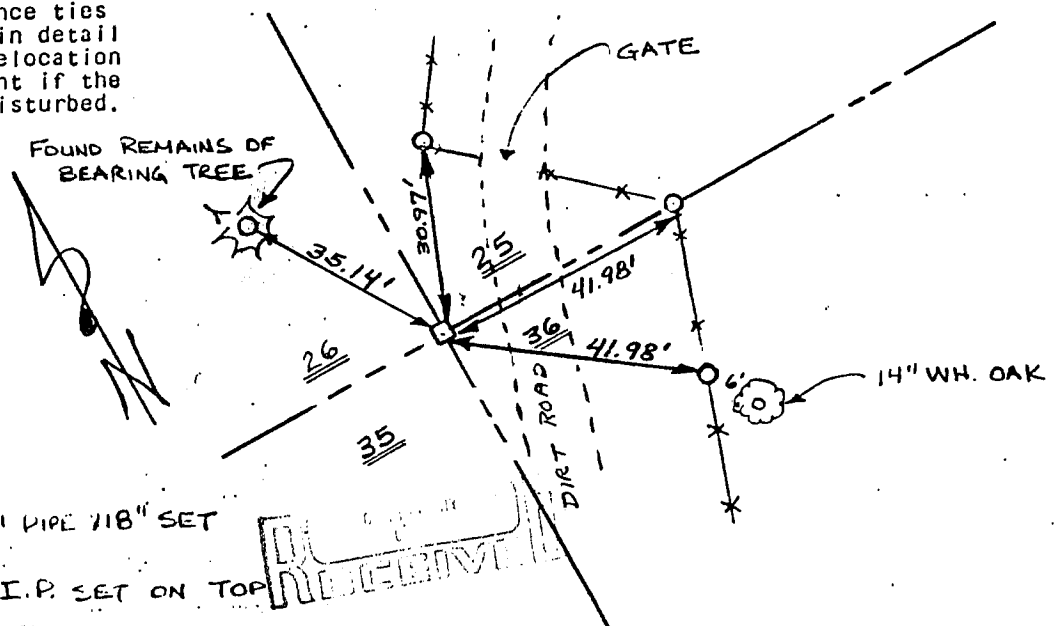
SCALE: 1"=30'

LEGEND

○ 3/4" I.D. IRON PIPE 1/8" SET

□ 2-2" x 24" I.P. SET ON TOP EACH OTHER

- EXISTING FENCE



SEP 22 1987

- (e) Describe any material discrepancy between the location of that corner as previously restored or reestablished and the location of that corner as previously restored or reestablished by distance and direction. Show the discrepancy on the new drawing under (d), above. Show the distances between the corner as previously restored or reestablished and (1) the corner as restored or reestablished, and (2) at least 2 of the witness monuments shown on the drawing in (d), above.

NONE

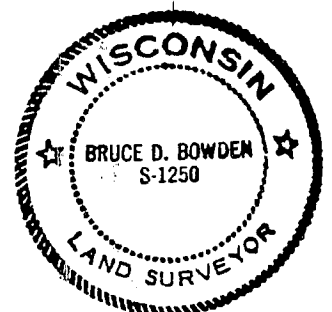
- (f) Was the corner restored through acceptance of (1) an obliterated evidence location, or, (2) a found perpetuated location?

AN OBLITERATED EVIDENCE LOCATION

- (g&h) Was the corner reestablished through lost corner proportionate methods? If so, show the method, including the directions and distances to other public land survey corners used as evidence or used for proportioning in determining the corner location?

NO.

Affix Land Surveyor Seal



- (i) I, BRUCE D. BOWDEN
(type or print name) certify that the corner location shown on this record was determined by me or under my direction and control and that this U.S. Public Land Survey Monument Record is correct and complete to the best of my knowledge and belief.

Bruce D. Bowden
Signature

August 15, 1987
Date

U. S. PUBLIC LAND SURVEY MONUMENT RECORD

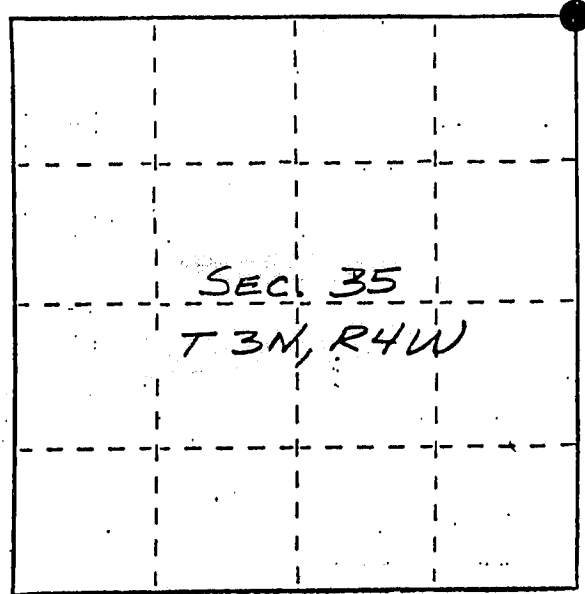
INSTRUCTIONS:

This record shall show the location of the corner and shall include all of the following nine elements (a through i).

- (a) Identify the corner by reference to the U.S. public land survey system.

● = Corner monument restored.

NE CORNER, SEC. 35
T3N, R4W, WATERLOO
TWP., GRANT CO. WISC.



- (b) Describe any record evidence, monument evidence, occupational evidence, testimonial evidence or any other material evidence you considered, and whether the monument was found or placed.

MONUMENT SET FROM EXISTING FIELD EVIDENCE &
REMAINS OF A FOUND BEARING TREE; LOCATION WAS VERIFIED
BY SURVEY BY MORROW-1941; NO OTHER RECORD OF CORNER
SINCE ORIGINAL GOVERNMENT SURVEY; LOCATION VERIFIED
BY AN EDM TRAVERSE OF THE AREA.

- (c) In the plan view drawing below, provide reference ties to at least 4 witness monuments, or, if the location is within a municipality, to at least 2 witness monuments. (Witness monuments shall be made of concrete, natural stone, iron or other equally durable material.)
Describe witness monuments.

- (d) Show a plan view drawing depicting the relevant monuments and reference ties which is sufficient in detail to enable accurate relocation of the corner monument if the corner monument is disturbed. Indicate north.

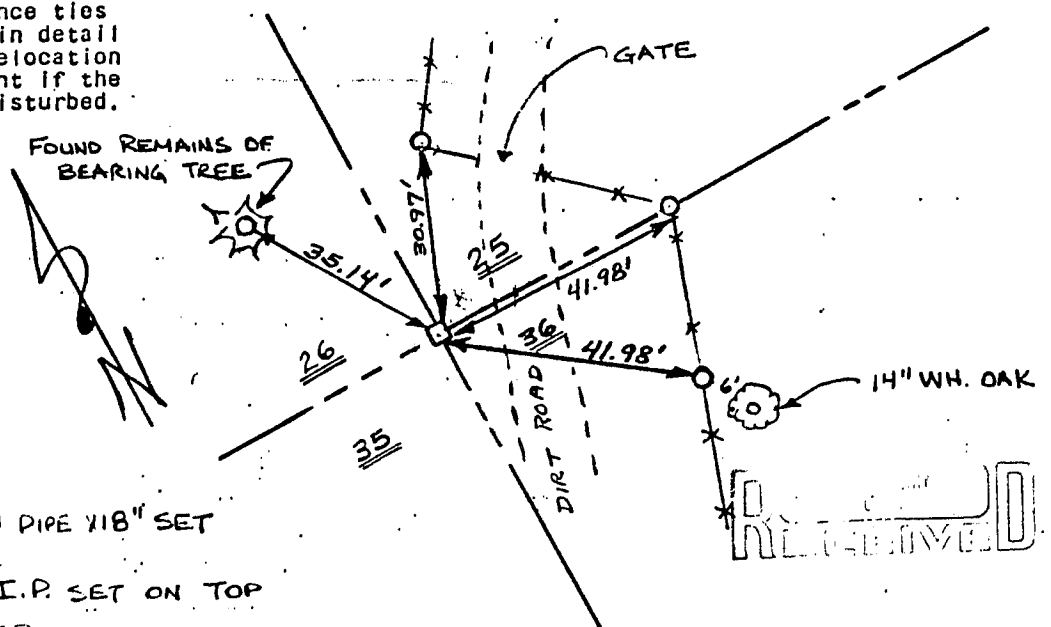
SCALE: 1"=30'

LEGEND

○ 3/4" I.D. IRON PIPE X 18" SET

□ 2-2" X 24" I.P. SET ON TOP EACH OTHER

--- EXISTING FENCE



NOV. 9 1987

- (e) Describe any material discrepancy between the location of the corner as restored or reestablished and the location of the corner as previously restored or reestablished by distance and direction. Show the discrepancy on the plan view drawing under (d), above. Show the distances from the corner as previously restored or reestablished and (1) the corner as restored or reestablished, and (2) to at least 2 of the witness monuments shown on the drawing in (d), above.

NONE

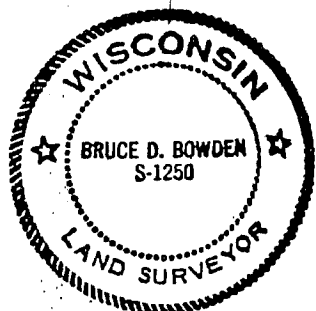
- (f) Was the corner restored through acceptance of (1) an obliterated evidence location, or, (2) a found perpetuated location?

AN OBLITERATED EVIDENCE LOCATION

- (g&h) Was the corner reestablished through lost corner proportionate methods? If so, show the method, including the directions and distances to other public land survey corners used as evidence or used for proportioning in determining the corner location?

NO.

Affix Land Surveyor Seal



- (i) I, BRUCE D. BOWDEN
(type or print name) certify that the corner location shown on this record was determined by me or under my direction and control and that this U.S. Public Land Survey Monument Record is correct and complete to the best of my knowledge and belief.

Bruce D. Bowden
Signature

August 15, 1987
Date

U. S. PUBLIC LAND SURVEY MONUMENT RECORD

INSTRUCTIONS:

This record shall show the location of the corner and shall include all of the following nine elements (a through i).

- (a) Identify the corner by reference to the U.S. public land survey system.

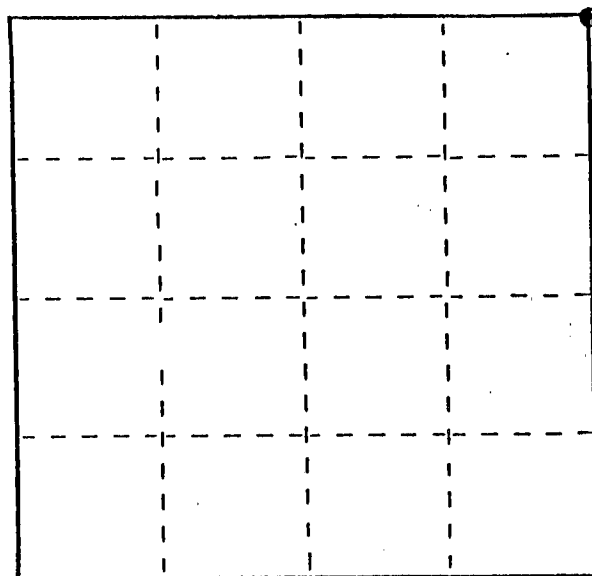
● = Corner monument restored.

NE Corner of Section 35

T 3 N R 4 W

Town of Waterloo

Grant Co., Wis.



Section 35 T3N R4W

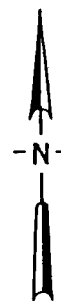
- (b) Describe any record evidence, monument evidence, occupational evidence, testimonial evidence or any other material evidence you considered, and whether the monument was found or placed.

Original corner by Lucius Lyon in the 1st 1/4 of 1833. In November, 1987, Bruce Bowden, RLS, set a 2" pipe at this corner. The EDM traverse throughout the area supports this location.

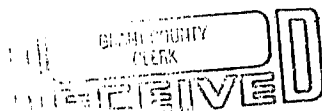
- (c) In the plan view drawing below, provide reference ties to at least 4 witness monuments, or, if the location is within a municipality, to at least 2 witness monuments. (Witness monuments shall be made of concrete, natural stone, iron or other equally durable material.) Describe witness monuments.

- (d) Show a plan view drawing depicting the relevant monuments and reference ties which is sufficient in detail to enable accurate relocation of the corner monument if the corner monument is disturbed. Indicate north.

Scale: 1" = 30'

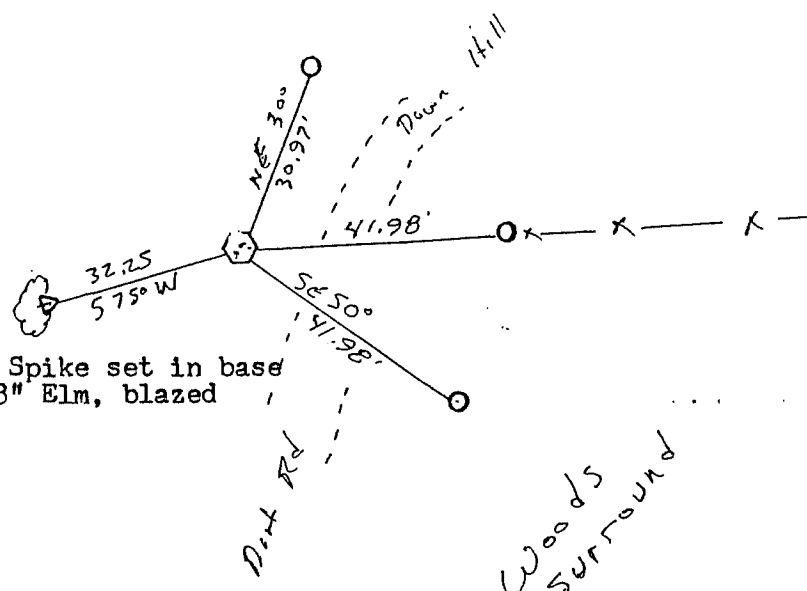


(Bearings shown are for orientation purposes only)



SEP 13 1989

60# Spike set in base of 8" Elm, blazed



Corner is a 2" Pipe (found)
(placed sign and post)

- (e) Describe any material discrepancy between the location of the corner as restored or reestablished and the location of that corner as previously restored or reestablished by distance and direction. Show the discrepancy on the plan view drawing under (d), above. Show the distances between the corner as previously restored or reestablished and (1) the corner as restored or reestablished, and (2) to at least 2 of the witness monuments shown on the drawing in (d), above.

NONE

- (f) Was the corner restored through acceptance of (1) an obliterated evidence location, or, (2) a found perpetuated location?

Found perpetuated location

- (g&h) Was the corner reestablished through lost corner proportionate methods? If so, show the method, including the directions and distances to other public land survey corners used as evidence or used for proportioning in determining the corner location?

No

- (i) I, F. Curtis Crook
(type or print name) certify that the corner location shown on this record was determined by me or under my direction and control and that this U.S. Public Land Survey Monument Record is correct and complete to the best of my knowledge and belief.

F. Curtis Crook

S-25-B9

