

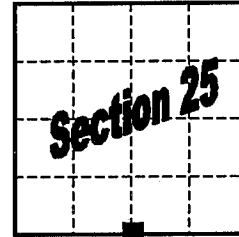
# GRANT COUNTY

## U.S. PUBLIC LAND SURVEY MONUMENT RECORD

Section Corner S ¼ Corner Section 25  
 T 3 N, R 4 W      Town of Waterloo

Type of monument Set ¾" x 30" Iron Bar w/ Grant County Aluminum Cap

Location indicated on sketch - ■



T 3 N, R 4 W

Describe and record evidence, monument evidence, occupational evidence, testimonial evidence or any other material evidence you considered, and whether the monument was found or placed.

Set corner at intersection of North-South one-quarter line of Section 25 and the South line of the SE ¼ of said Section 25.

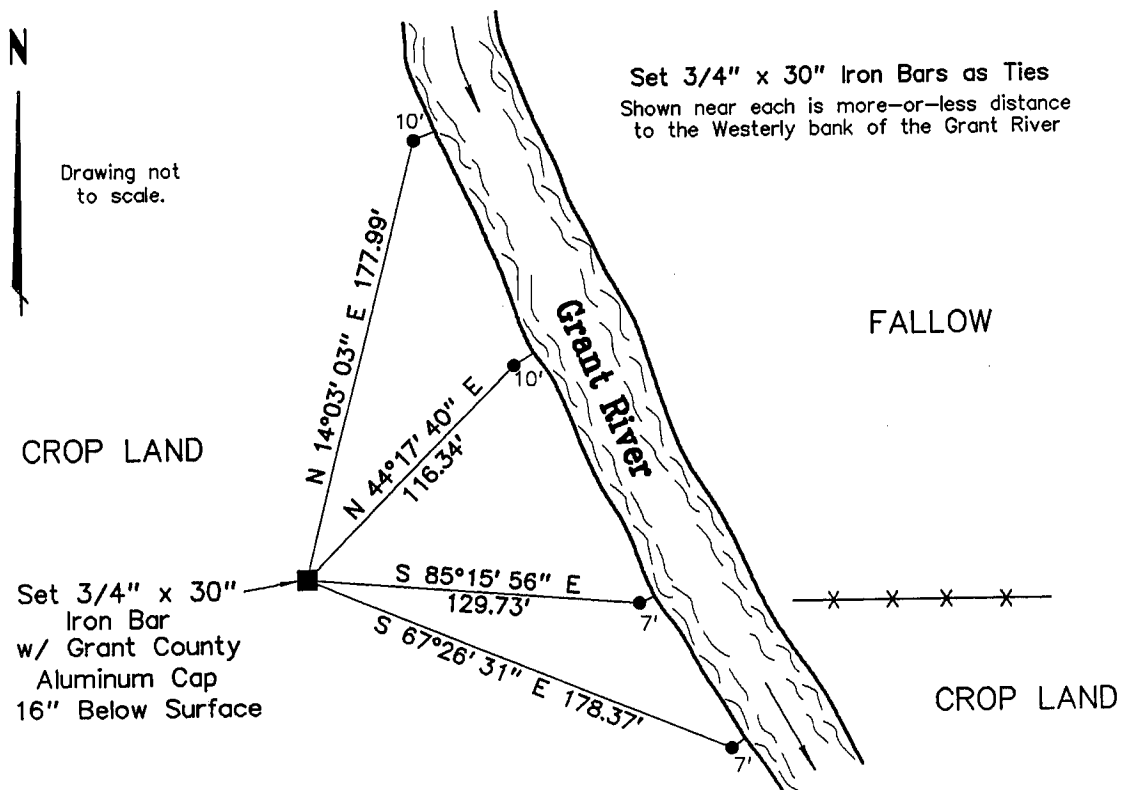
North-South one-quarter line determined from N ¼ corner of Section 25 re-established this same date and a found stone with ¾" iron rod leaning over it at the Center of Section 25. Said North-South one-quarter line being further verified by old North/South occupation found North of the Grant River along the East line of the SE ¼ - SW ¼ of Section 25.

South line of the SE ¼ of Section 25 determined from a 1" iron pipe found at the SE corner of Section 25 and an iron rod found along the occupied north line of the NE ¼ of Section 36-3N-4W as shown on survey by Michael R. LaRosa, 1997.

Acceptance of said monument by LaRosa resulted in a corner location approximately 10 to 12 feet North of alignment with occupation at the East side of the Grant River nearer the corner (see sketch). However, acceptance of said monument brought the corner closer to alignment between existing monuments at the Southeast and Southwest corners of Section 25. The corner is approximately 7 feet South of a straight line between the same.

**Grant County Coordinates(survey feet):      N=468606.558      E=797529.670**

Show a plan view drawing depicting the relevant monuments, providing reference ties to at least four witness monuments. Describe witness monuments. Show relationship to occupation.



Describe any material discrepancy between the location of the corner as restored or reestablished and the location of that corner as previously restored or reestablished by distance and direction. Show the discrepancy on the plan view drawing. Show the distances between the corner as restored or reestablished, and (1) the corner as previously restored or reestablished – and (2) to at least two of the witness monuments shown on the previous drawing.

N/A

Was the corner restored through acceptance of (1) an obliterated evidence location, (2) a found perpetuated location, or (3) an existent corner location.

(2) a found perpetuated location, as per occupation and surveys of record

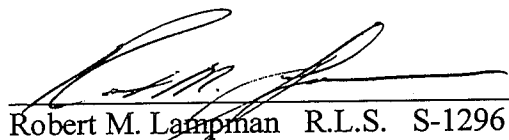
Was the corner reestablished through lost corner proportionate methods? If so, show the method including the directions to other public land survey corners used as evidence or used for proportioning in determining the corner location.

N/A

Show the history of record in chronological order from Original Government Survey to present.

- (1) Original Government Survey – Lucuis Lyon – 1833
- (2) 1891 – Corner Re-established by Charles Sampson from stump of original Walnut bearing tree (Survey at Book D, Page 195)

I, Robert M. Lampman, certify that the corner location shown on this record was determined by me or under my direction and control and that this U.S. Public Land Survey Monument Record is correct to the best of my knowledge and belief.

  
Robert M. Lampman R.L.S. S-1296

11-17-1999  
Date

