

Fax to JOHN ANDERSON 12/22/97

Survey Monument Record

CORNER NO. SECTION SW30 SE25 TOWN 3N 3N RANGE 3W 4W

TYPE OF MONUMENT 1" IRON PIPE @ SE OF 25-3-4

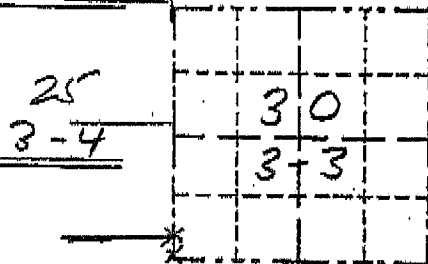
STATE PLANE COORDINATES: N E

ELEVATION - M.S.L. DATUM:

THETA ANGLE:

FIELD BOOK:

PAGE



BASIS FOR MONUMENT LOCATION

(Use reverse side if necessary)

Show info such as: History of corner, with reference to Vol. and pg., dates, surveyor; exact description of monument replaced; if location computed, by taped or EDM traverse; landowner, remarks, etc.

LOCATION (Indicated by "X") FOUND PERPETUATED LOCATION OBSOLETE EVIDENCE LOCATION LOST CORNER (RESTORED BY PROPORTIONATE METHODS)

Occupational evidence of a fence west and north was accepted as the SE corner of 25-3-4 and monumented with a 1" Iron Pipe. This location was noted in a survey by Celka in 1983. Corner was previously restored by Sampson in the 1890's. A reference pipe was placed on an old N-S fence in line with fence remnants in trees to the east. This location proved to be near the computed (restored) location of the SW corner of 30-3-3. This corner was not monumented due to seasonal conditions and inaccessibility at the time of survey "completion".

CERTIFIED CORRECT TO THE BEST OF MY KNOWLEDGE AND BELIEF

Muhua R. Jeppa Registered Land Surveyor

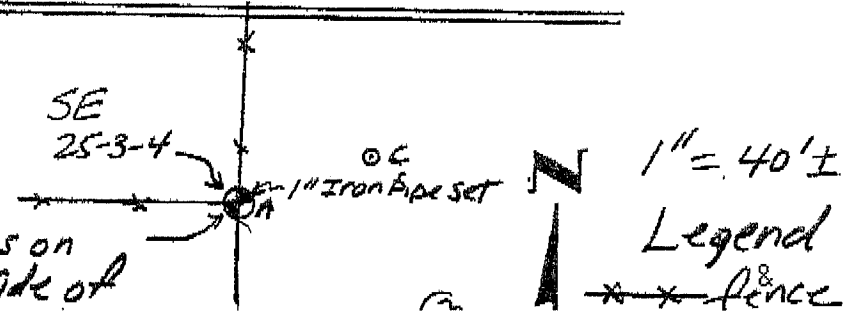
DATE: 12/22/1997

TIE SKETCH

Show at least (4) ties and monument

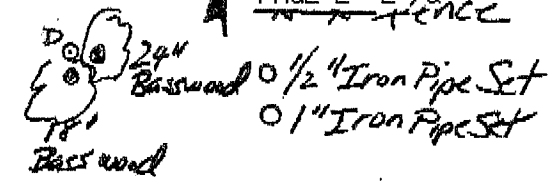
- A-B S 0°54'55"W 90.42'
A-C N 69°26'22"E 28.63'
A-D S 51°08'27"E 41.88'
A-E S 10°11'46"E 96.85'

Pipe is on East side of



Legend * * * fence

H-U S 51°08'21"E 41.88' Pipe is on
 A-E S 10°11'46"E 96.85' East side of
 A-F S 2°45'53"W 90.75' 24" Oak at corner
 B-C N 15°42'19"E 104.36'
 B-D N 27°58'16"E 72.61'
 B-E S 75°12'20"E 19.23'
 B-F S 85°28'13"W 2.94'
 (2.93' WEST & 0.23' SOUTH)



DOWNHILL
 ←



No monument
 Set

