

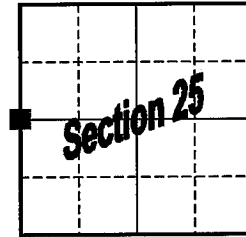
SEP 22 1999

# GRANT COUNTY U.S. PUBLIC LAND SURVEY MONUMENT RECORD

Section Corner common to Sections 25 & 26  
T 3 N, R 4 W - Town of Waterloo

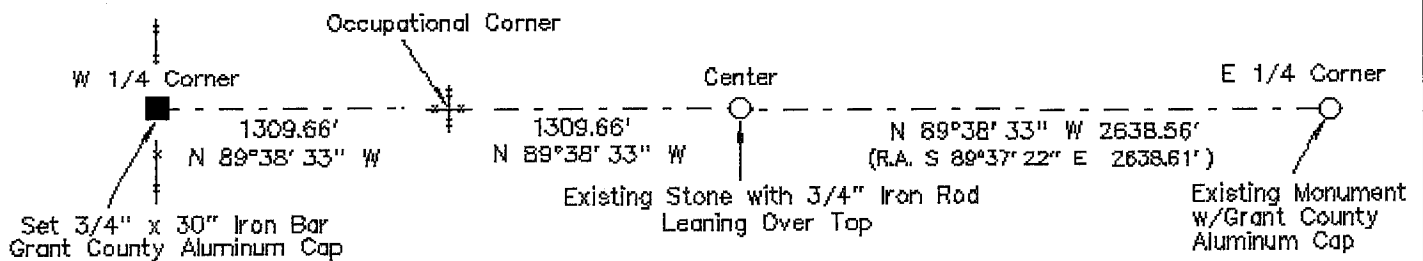
Type of monument: 3/4" Iron Bar with Grant County Aluminum Cap

Location indicated on sketch - ■



T 3 N, R 4 W

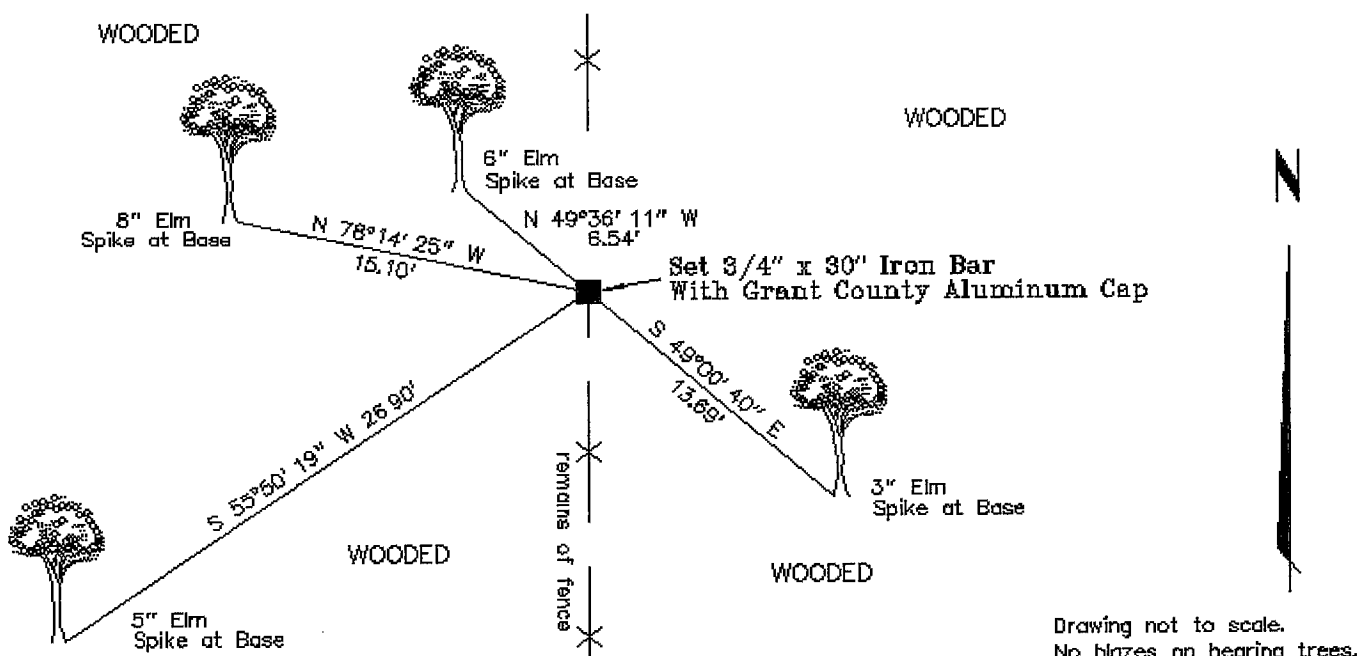
Describe and record evidence, monument evidence, occupational evidence, testimonial evidence or any other material evidence you considered, and whether the monument was found or placed.



Accepted direction along the East-West one-quarter line of Section 25 as established by existing monuments at the Center and East one-quarter corner as shown above. Said direction in agreement with East-West fence at the occupied Southeast corner of the SW 1/4 of the NW 1/4. Doubled distance from the Center through said occupied corner, which agreed with remains of North-South fence found at the Section Corner area. Also verified that said location would line up well with the Southwest corner as set by Bowden (tied by Curtis Crook) and occupation at the Northwest corner. Set 3/4" x 30" iron bar with aluminum cap as shown below.

Grant County Coordinates: N=471266.812 E=794924.886

Show a plan view drawing depicting the relevant monuments, providing reference ties to at least four witness monuments. Describe witness monuments. Show relationship to occupation.



Drawing not to scale.  
No blazes on bearing trees.

Describe any material discrepancy between the location of the corner as restored or reestablished and the location of that corner as previously restored or reestablished by distance and direction. Show the discrepancy on the plan view drawing. Show the distances between the corner as restored or reestablished, and (1) the corner as previously restored or reestablished – and (2) to at least two of the witness monuments shown on the previous drawing.

N/A

Was the corner restored through acceptance of (1) an obliterated evidence location, (2) a found perpetuated location, or (3) an existent corner location.

(2) Found perpetuated (by occupation)

Was the corner reestablished through lost corner proportionate methods? If so, show the method including the directions to other public land survey corners used as evidence or used for proportioning in determining the corner location.

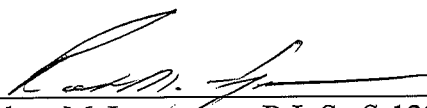
N/A

Show the history of record in chronological order from Original Government Survey to present.

- (1) Original Government Survey - Lucius Lyon - 1833
- (2) Freeman - 1842 - Survey No. 173 - Book A - Freeman measured South from this corner to the SW corner of Section and may have set the forty corner between the two, but lists no new ties for this corner and does not mention its condition

No other records found.

I, Robert M. Lampman, certify that the corner location shown on this record was determined by me or under my direction and control and that this U.S. Public Land Survey Monument Record is correct to the best of my knowledge and belief.

  
Robert M. Lampman R.L.S. S-1296

9-20-99  
Date

