

# U. S. PUBLIC LAND SURVEY MONUMENT RECORD

**INSTRUCTIONS:** This record shall show the location of the corner and shall include all of the following nine elements (a through i).

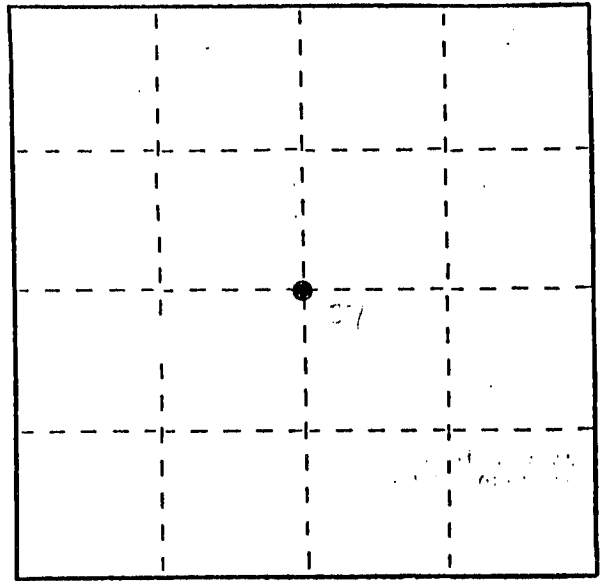
- (a) Identify the corner by reference to the U.S. public land survey system.  
 ● = Corner monument restored.

Center of Section 27

T 3 N R 4 W

Town of Waterloo

Grant Co., Wis.



Section 27 T3N R4W

- (b) Describe any record evidence, monument evidence, occupational evidence, testimonial evidence or any other material evidence you considered, and whether the monument was found or placed.

During July, 1975, a survey was made by David Krohn, co-signed and stamped by Homer Ralph Jr., setting a 1" iron pipe at the existing fence corner. In August, 1987, Bruce Bowden, RLS, did a plat of survey, also using this corner as the West line of the SE 1/4. This survey also establishes the S 1/4 corner.

The 1" iron pipe fits the E-W 1/4 line very well, and was used, or considered in determining the locations of the East & West 1/4 corners. In establishing a straight line between the aforementioned S 1/4 corner, and the previously determined North 1/4 corner, the iron pipe falls 5.53' to the West, as shown. As the North 1/4 corner is very well in agreement with the occupation lines, as well as Section EDM measurements, I placed the corner as prescribed, at the intersection of the N-S 1/4 line with the E-W 1/4 line.

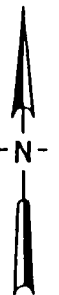
- (c) In the plan view drawing below, provide reference ties to at least 4 witness monuments, or, if the location is within a municipality, to at least 2 witness monuments. (Witness monuments shall be made of concrete, natural stone, iron or other equally durable material.) Describe witness monuments.

- (d) Show a plan view drawing depicting the relevant monuments and reference ties which is sufficient in detail to enable accurate relocation of the corner monument if the corner monument is disturbed. Indicate north.

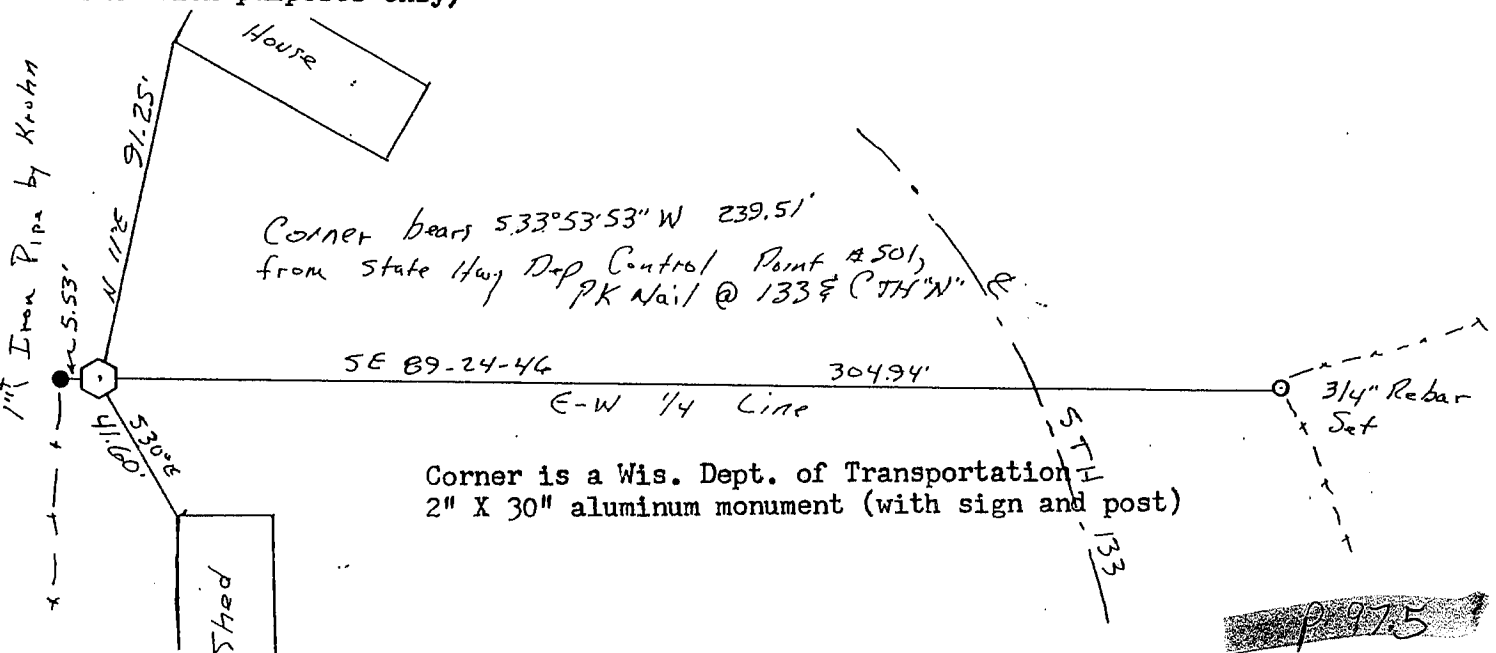
RECORDED  
INDEXED

SEP. 13 1989

Scale: 1" = 50'



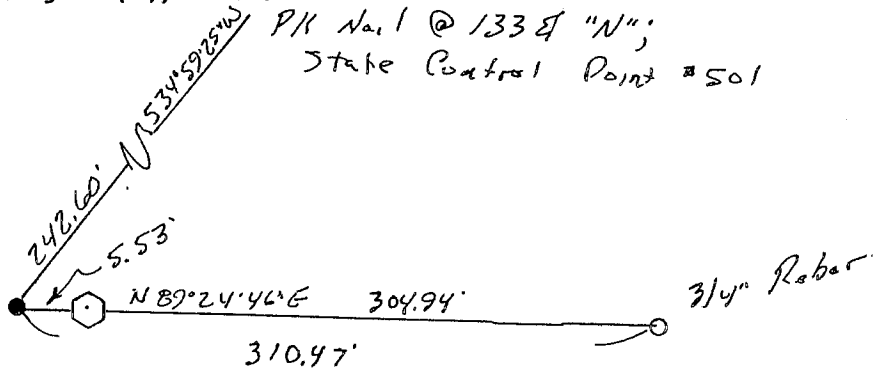
(Bearings shown are for orientation purposes only)



9-975

(e) Describe any material discrepancy between the location of the corner as restored or reestablished and the location of that corner as previously restored or reestablished by distance and direction. Show the discrepancy on the plan view drawing under (d), above. Show the distances between the corner as previously restored or reestablished and (1) the corner as restored or reestablished, and (2) to at least 2 of the witness monuments shown on the drawing in (d), above.

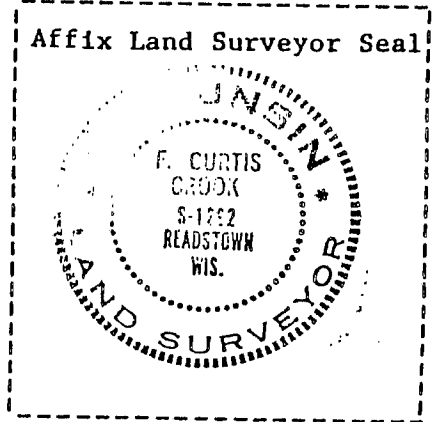
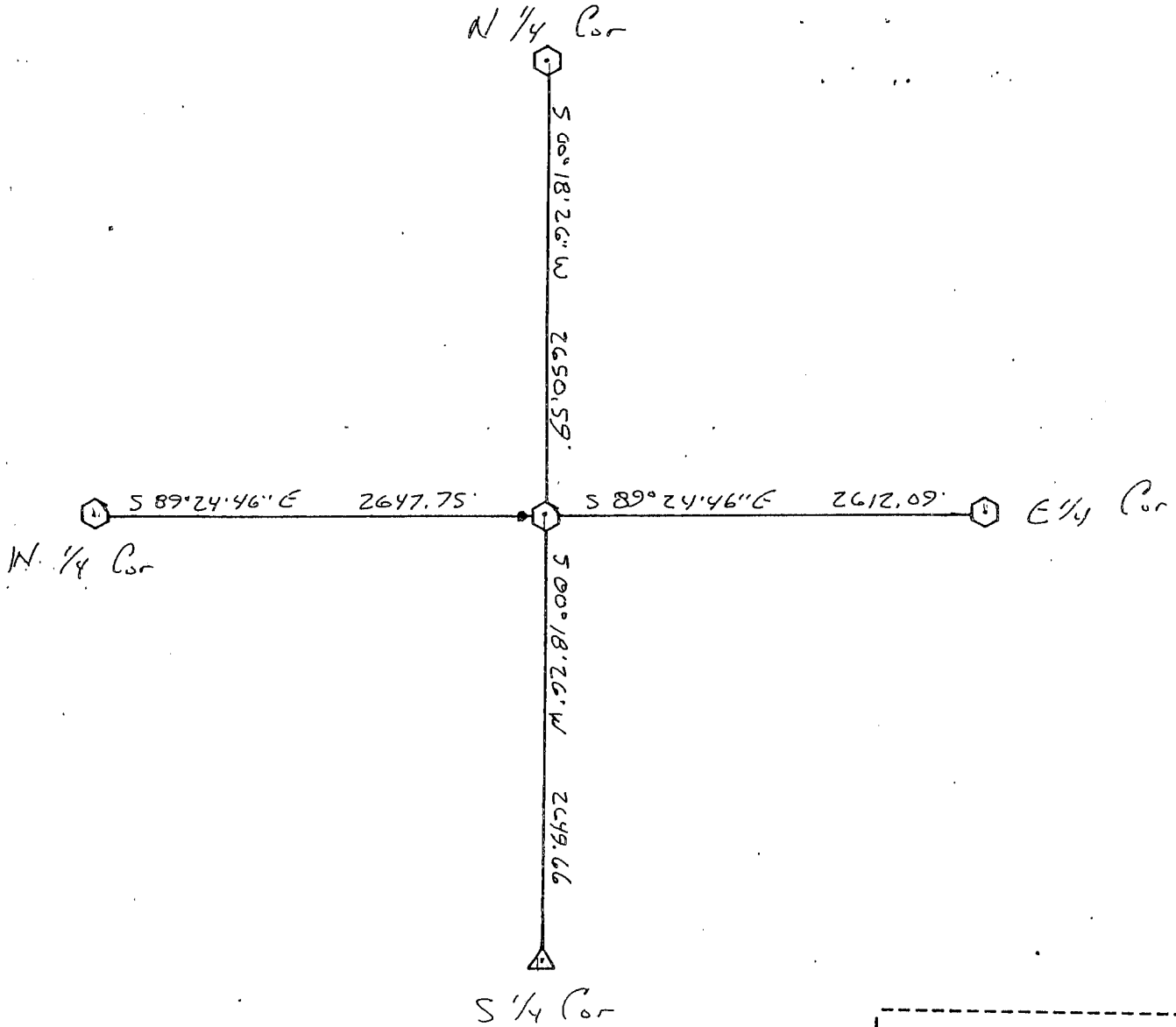
No  
SCs



(f) Was the corner restored through acceptance of (1) an obliterated evidence location, or, (2) a found perpetuated location?

Not Applicable

(g&h) Was the corner reestablished through lost corner proportionate methods? If so, show the method, including the directions and distances to other public land survey corners used as evidence or used for proportioning in determining the corner location?



(1) I, F. Curtis Crook (type or print name) certify that the corner location shown on this record was determined by me or under my direction and control and that this U.S. Public Land Survey Monument Record is correct and complete to the best of my knowledge and belief.

F. Curtis Crook

5-25-89