

GRANT COUNTY CERTIFIED LAND CORNER

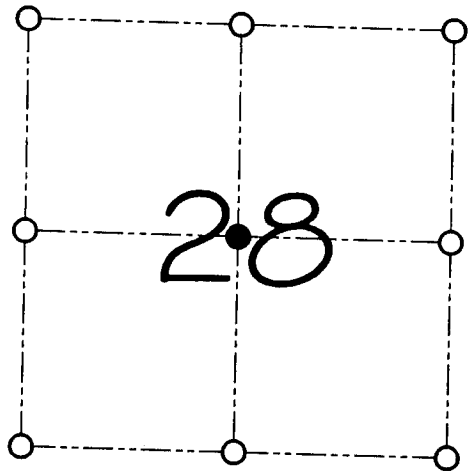
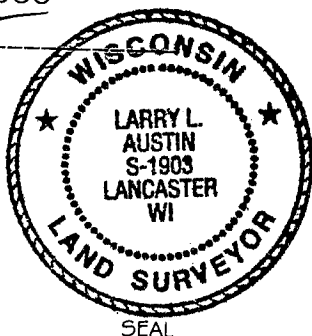
CORNER NUMBER 96A

CERTIFICATE:

I, Larry L. Austin, do hereby certify that on the 11th day of July, 2000, I found no evidence of the Center of Section 28, Town 3 North, Range 4 West, of the 4th Principal Meridian, and I re-established said corner according to the Wisconsin statutes as shown and described hereon.

Dated this 28th day of July, 2000

Larry L. Austin
Larry L. Austin S-1903



● = CORNER LOCATION
CENTER OF SECTION 28, T 3 N R 4 W TOWN OF WATERLOO

HISTORY OF ORIGINAL CORNER ESTABLISHMENT:

In 1858 Hayden set the corner with no mention of the monument or bearing trees.

DESCRIPTION OF CORNER EVIDENCE FOUND:

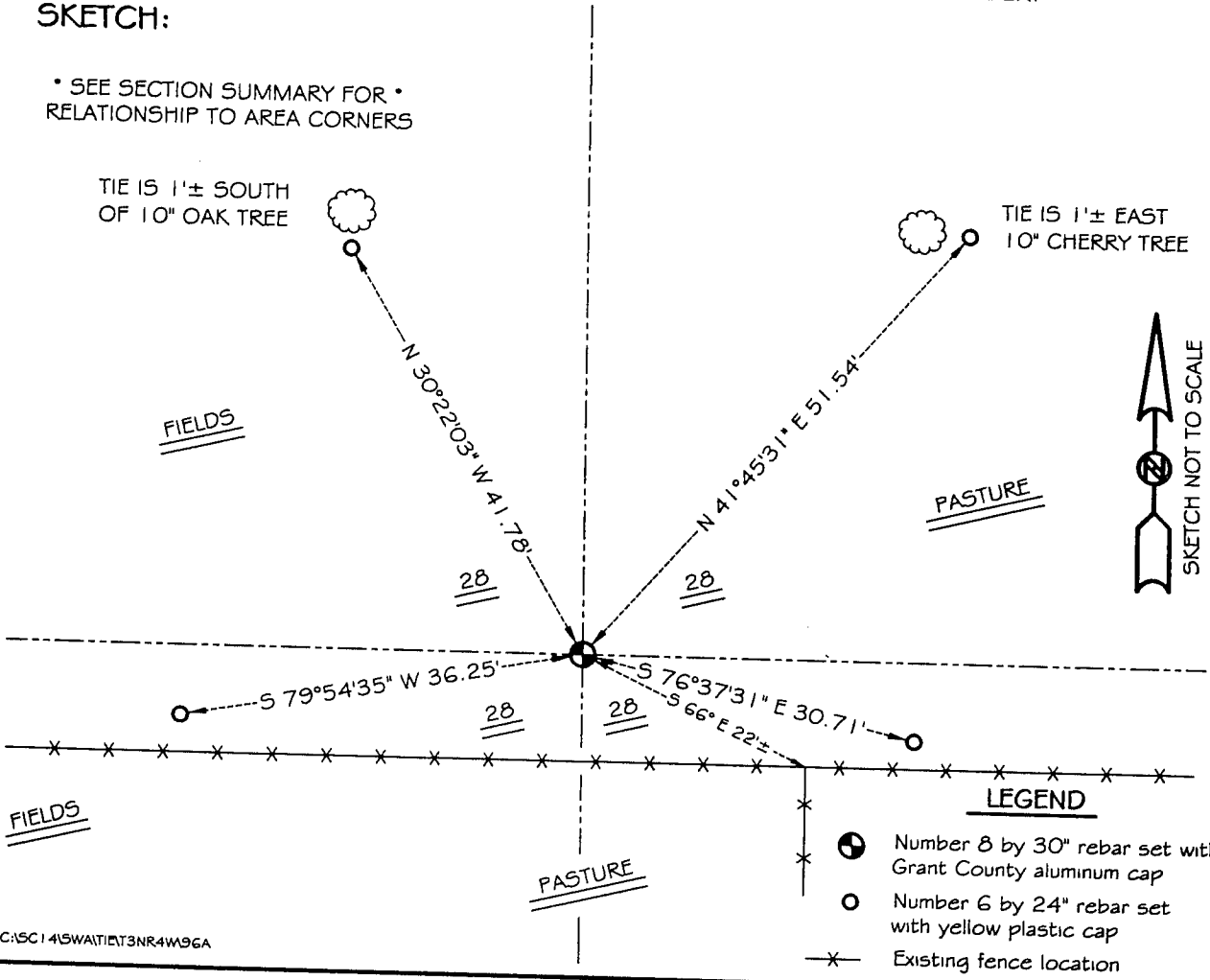
I found no evidence of the corner used by Hayden. I reset the corner based on the intersection of the 1/4 lines. Verified this location using EDM & GPS methods.

DESCRIPTION OF CORNER AND WITNESS MONUMENTS, references and accessories used to perpetuate the original or re-established location of this corner

WITNESS TO THE CORNER LOCATION: BOBBY SEDGWICK & SHELBY BLINDERT

SKETCH:

• SEE SECTION SUMMARY FOR •
RELATIONSHIP TO AREA CORNERS



- LEGEND**
- Number 8 by 30" rebar set with Grant County aluminum cap
 - Number 6 by 24" rebar set with yellow plastic cap
 - x— Existing fence location