

GRANT COUNTY CERTIFIED LAND CORNER

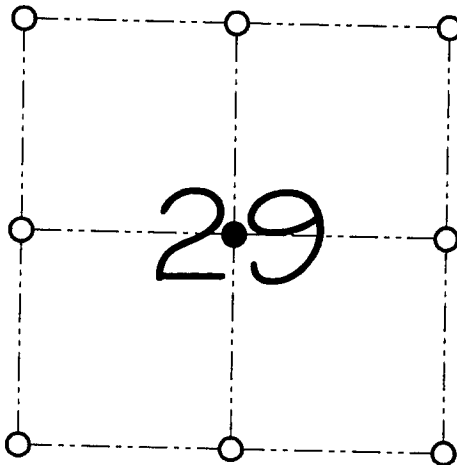
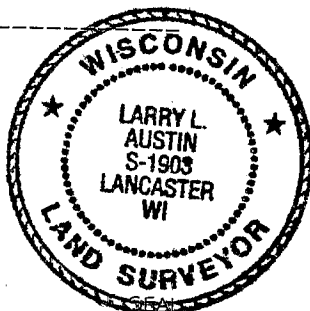
CORNER NUMBER 95A

CERTIFICATE:

I, Larry L. Austin, do hereby certify that on the 29th day of June, 2000, I found evidence of the Center of Section 29, Town 3 North, Range 4 West, of the 4th Principal Meridian, and I re-established said corner according to the Wisconsin statutes as shown and described hereon.

Dated this 28th day of July, 2000

Larry L. Austin
Larry L. Austin S-1903



● = CORNER LOCATION
CENTER OF SECTION 29, T 3 N R 4 W TOWN OF WATERLOO

HISTORY OF ORIGINAL CORNER ESTABLISHMENT:

Corner was never originally set. Corner was set in 1868 by Joel Barber equadistant on the East-West quarter line. No other record of the corner was found.

DESCRIPTION OF CORNER EVIDENCE FOUND:

I found an existing North-South fence in the area of the corner. Equadistant on the East-West 1/4 line did not fit the fence. The intersection of the quarter lines did fit the fence well. I set the corner at the intersection of quarter lines. Verified it's location using EDM & GPS methods.

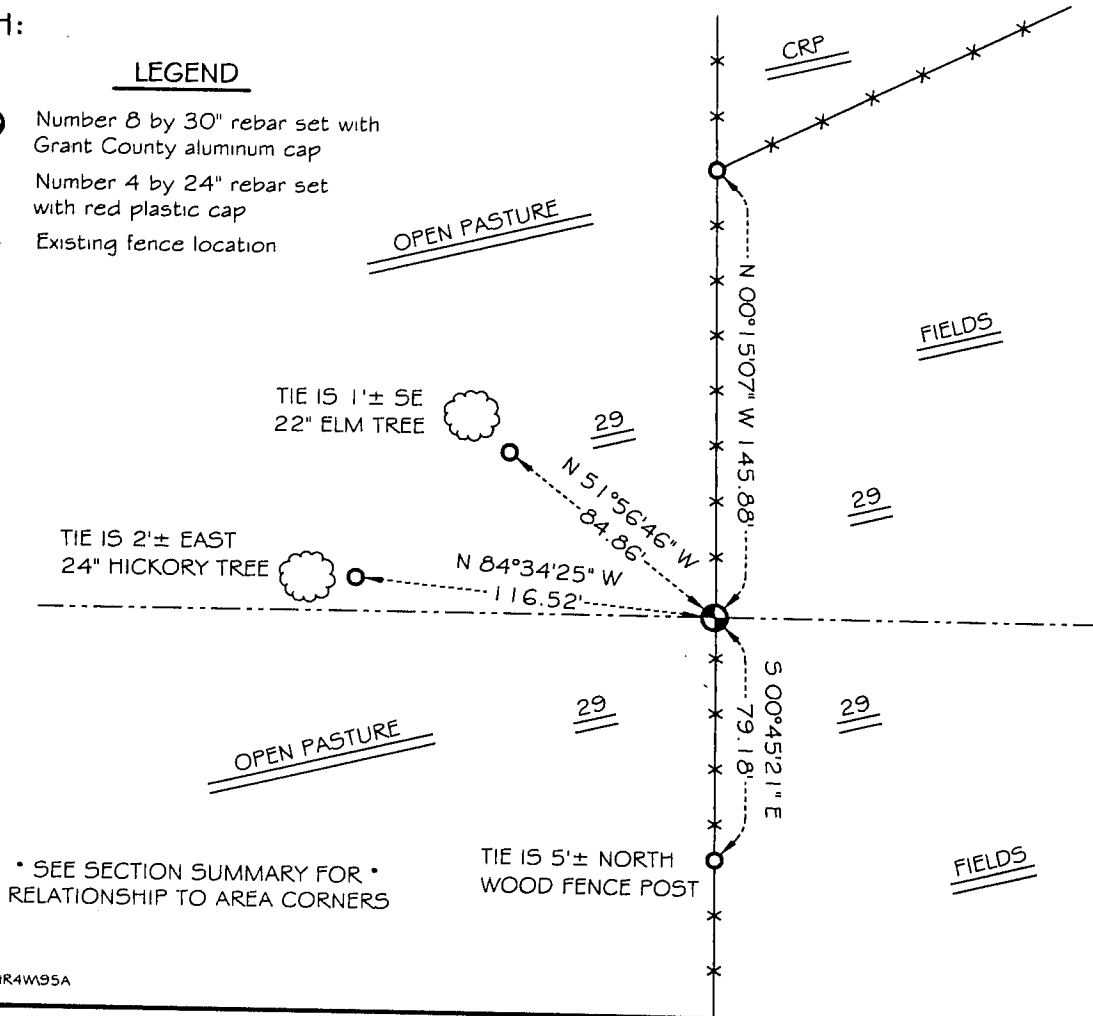
DESCRIPTION OF CORNER AND WITNESS MONUMENTS, references and accessions used to perpetuate the original or re-established location of this corner

WITNESS TO THE CORNER LOCATION: SHANE AUSTIN & JERRY SPEILMAN

SKETCH:

LEGEND

- Number 8 by 30" rebar set with Grant County aluminum cap
- Number 4 by 24" rebar set with red plastic cap
- x- Existing fence location



* SEE SECTION SUMMARY FOR *
RELATIONSHIP TO AREA CORNERS