

# GRANT COUNTY CERTIFIED LAND CORNER

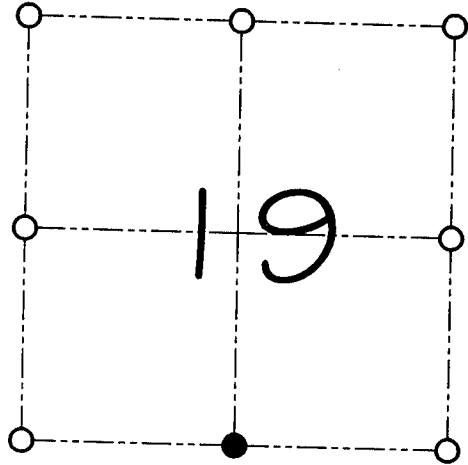
CORNER NUMBER 92

**CERTIFICATE:**

I, Larry L. Austin, do hereby certify that on the 11th day of July, 2000, I found evidence of the South 1/4 corner of Section 19, Town 3 North, Range 4 West, of the 4th Principal Meridian, and I re-established said corner according to the Wisconsin statutes as shown and described hereon.

Dated this 28th day of July, 2000

*Larry L. Austin*  
Larry L. Austin S-1903



● = CORNER LOCATION  
SOUTH 1/4 CORNER OF SECTION 19, T 3 N R 4 W TOWN OF WATERLOO

**HISTORY OF ORIGINAL CORNER ESTABLISHMENT:**

Corner was originally set in 1833 by Lucius Lyon. In 1855 Overton tied to the corner. In 1868 Barber tied to the corner. In 1896 Sampson tied to the corner.

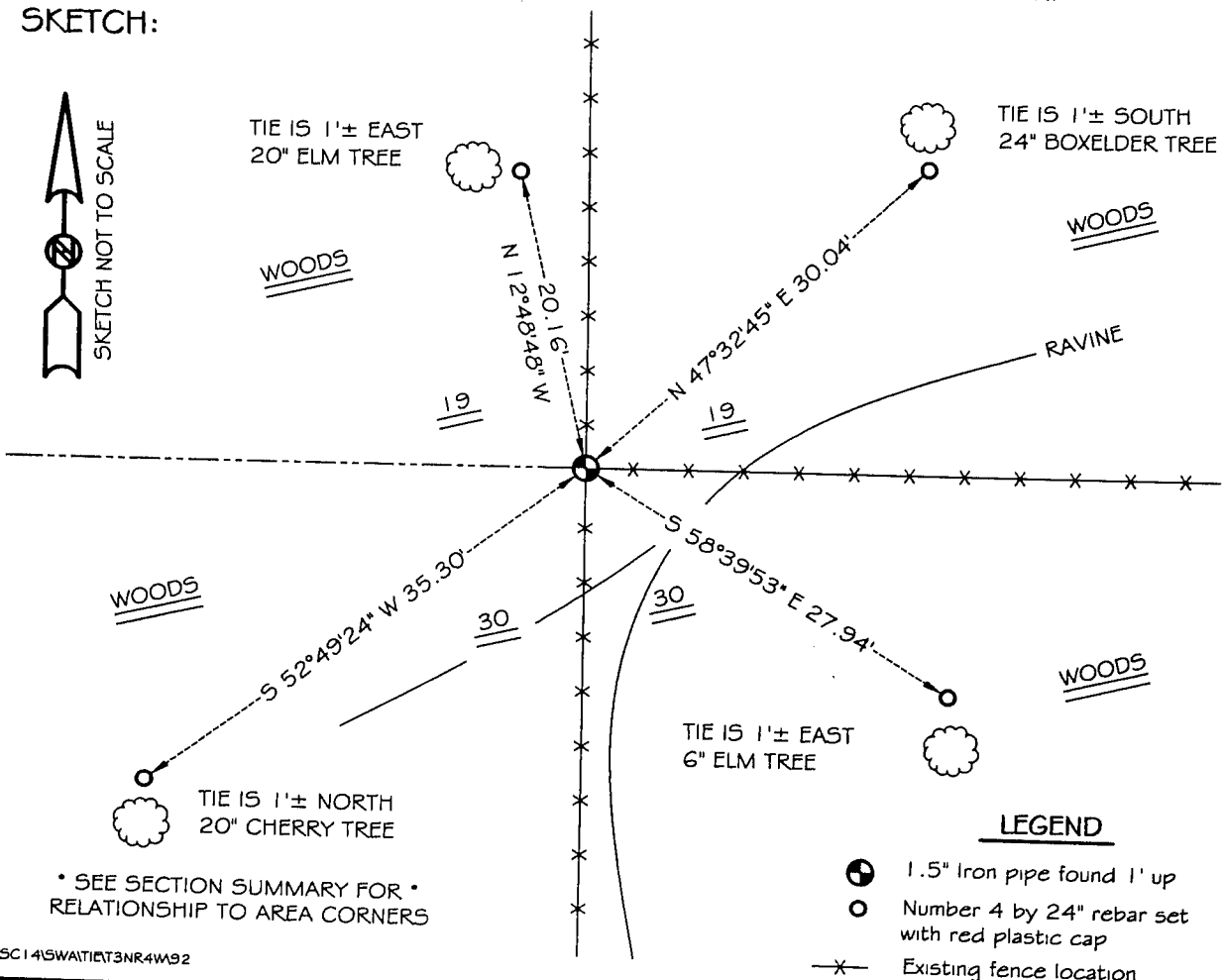
**DESCRIPTION OF CORNER EVIDENCE FOUND:**

I found a 1.5" iron pipe and accepted it's location after an EDM & GPS traverse of the area.

**DESCRIPTION OF CORNER AND WITNESS MONUMENTS, references and accessories used to perpetuate the original or re-established location of this corner**

WITNESS TO THE CORNER LOCATION: BOBBY SEDGWICK & SHELBY BLINDERT

**SKETCH:**



\* SEE SECTION SUMMARY FOR \*  
RELATIONSHIP TO AREA CORNERS

**LEGEND**

- 1.5" Iron pipe found 1' up
- Number 4 by 24" rebar set with red plastic cap
- x- Existing fence location