

GRANT COUNTY CERTIFIED LAND CORNER

CORNER NUMBER 91

CERTIFICATE:

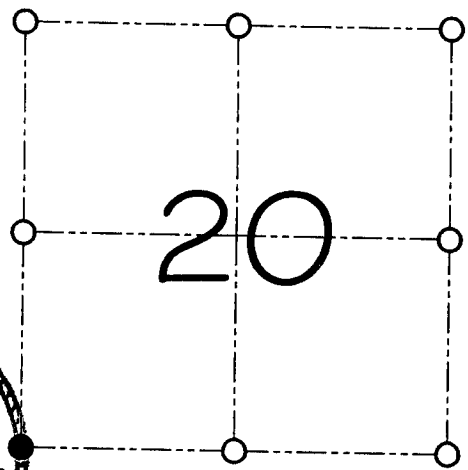
I, Larry L. Austin, do hereby certify that on the 23rd day of June, 2000, I found no evidence of the Southwest corner of Section 20, Town 3 North, Range 4 West, of the 4th Principal Meridian, and I re-established said corner according to the Wisconsin statutes as shown and described hereon.

Dated this 28th day of July, 2000

Larry L. Austin
Larry L. Austin S-1903



SEAL



● = CORNER LOCATION
SOUTHWEST CORNER OF SECTION 20, T 3 N R 4 W TOWN OF WATERLOO

HISTORY OF ORIGINAL CORNER ESTABLISHMENT:

Corner was set in 1833 by Lucius Lyon.
No other record of the corner was found.

DESCRIPTION OF CORNER EVIDENCE FOUND:

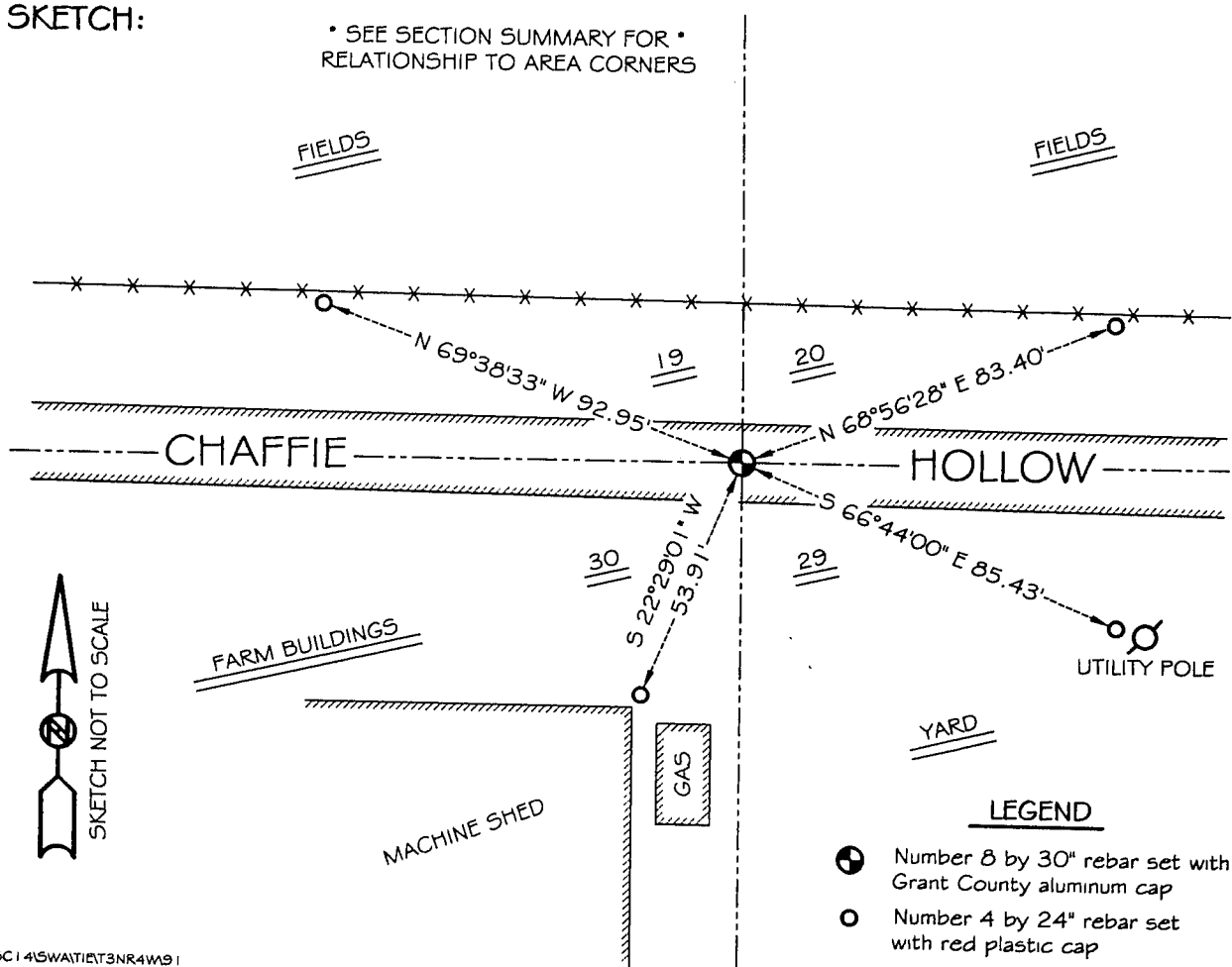
I reset the corner based on proportionate methods and the use of occupational evidence of the road. This location fit well with area corners. Verified it's location using EDM & GPS methods.

DESCRIPTION OF CORNER AND WITNESS MONUMENTS, references and accessories used to perpetuate the original or re-established location of this corner

WITNESS TO THE CORNER LOCATION: SHANE AUSTIN & JERRY SPEILMAN

SKETCH:

• SEE SECTION SUMMARY FOR •
RELATIONSHIP TO AREA CORNERS



LEGEND

- Number 8 by 30" rebar set with Grant County aluminum cap
- Number 4 by 24" rebar set with red plastic cap
- x- Existing fence location