

34087

U.S. PUBLIC LAND SURVEY MONUMENT RECORD - GRANT COUNTY, WI

Section 21, Town 3 North Range 4 West, Town of Waterloo (a)

NOTE: This form is intended and designed to fulfill all requirements of the Wisconsin Administrative Code Chapter A-E 7.08, U.S. Public Land Survey Monument Record (3) (a) (b) (c) (d) (e) (f) (g) (h) (i).

CERTIFICATE: (i)

I, Aaron J. Austin, Wisconsin Professional Land Surveyor, do hereby certify that the corner location on this record was determined by me and/or under my direct supervision and that this U.S. Public Land Survey Monument Record is correct and complete to the best of my knowledge and belief.

Dated this 19th day of October, 2023.

Aaron J. Austin
Aaron J. Austin, S-2922



● = CORNER LOCATION

Grant County Coordinates:
NAD 83 (2011)
Northing: 473,984.15
Easting: 784,311.19

HISTORY OF CORNER ESTABLISHMENT:

Original corner was set in 1833 by Lucius Lyon.
David Davis set a 1 1/4" rebar and prepared a Survey Monument Record dated 5-22-1981.
F. Curtis Crook set a 2" WISDOT Aluminum Monument and prepared a Survey Monument Record dated 5-25-1989.

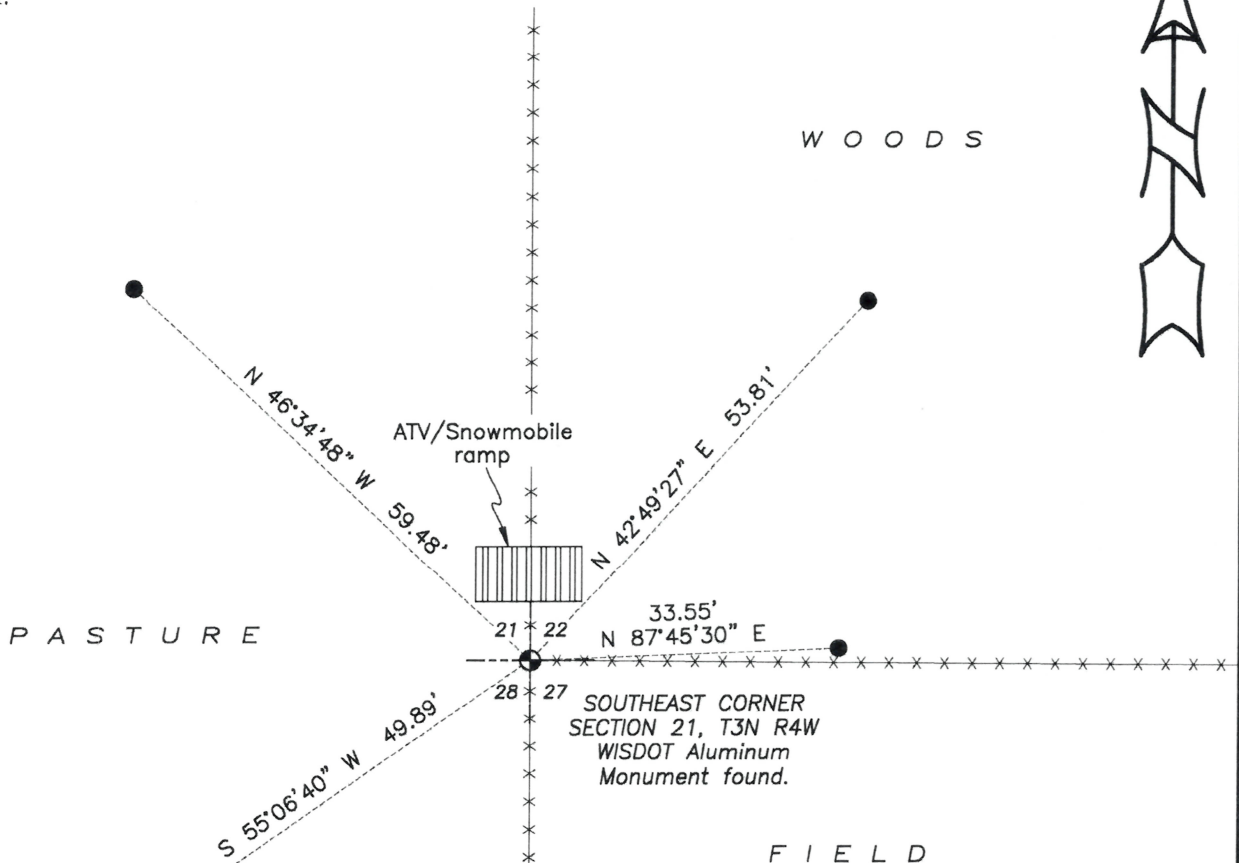
DESCRIPTION OF CORNER EVIDENCE FOUND: (b) (f) (g) (h)

I found the WISDOT Aluminum Monument Crook set. I set four witness corners after I verified the Monument's location with G.P.S. and E.D.M. methods.

DESCRIPTION OF CORNER AND WITNESS MONUMENTS, references and accessories used to perpetuate the original or re-established location of this corner. (c) (d) (e)

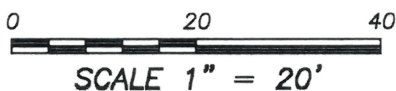
Witnesses to corner location Shane Austin, Tanner Austin.
Drawn by: Owen Austin.

SKETCH:



LEGEND

- Section Corner—as designated
- 3/4" x 18" rebar set
- x-x-x- Existing fence



SCALE 1" = 20'

H:\CRD\23S175
H:\TIE\T3NR4W\87

U. S. PUBLIC LAND SURVEY MONUMENT RECORD

INSTRUCTIONS : This record shall show the location of the corner and shall include all of the following nine elements (a through i).

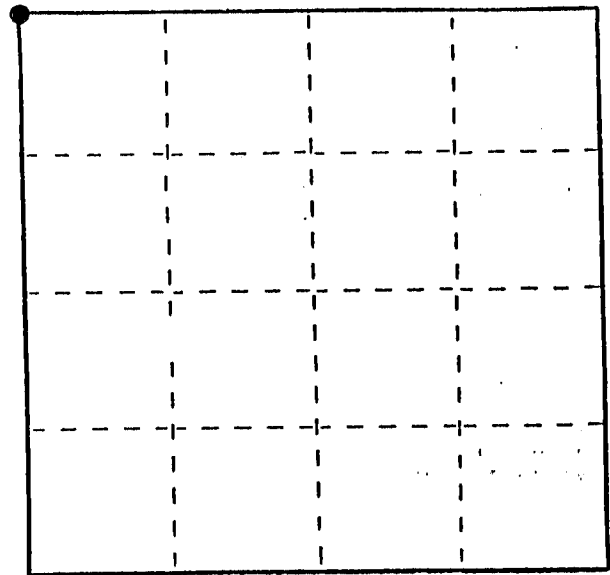
- (a) Identify the corner by reference to the U.S. public land survey system.
 ● = Corner monument restored.

NW Corner of Section 27

T 3 N R 4 W

Town of Waterloo

Grant Co., Wis.



Section 27 T3N R4W

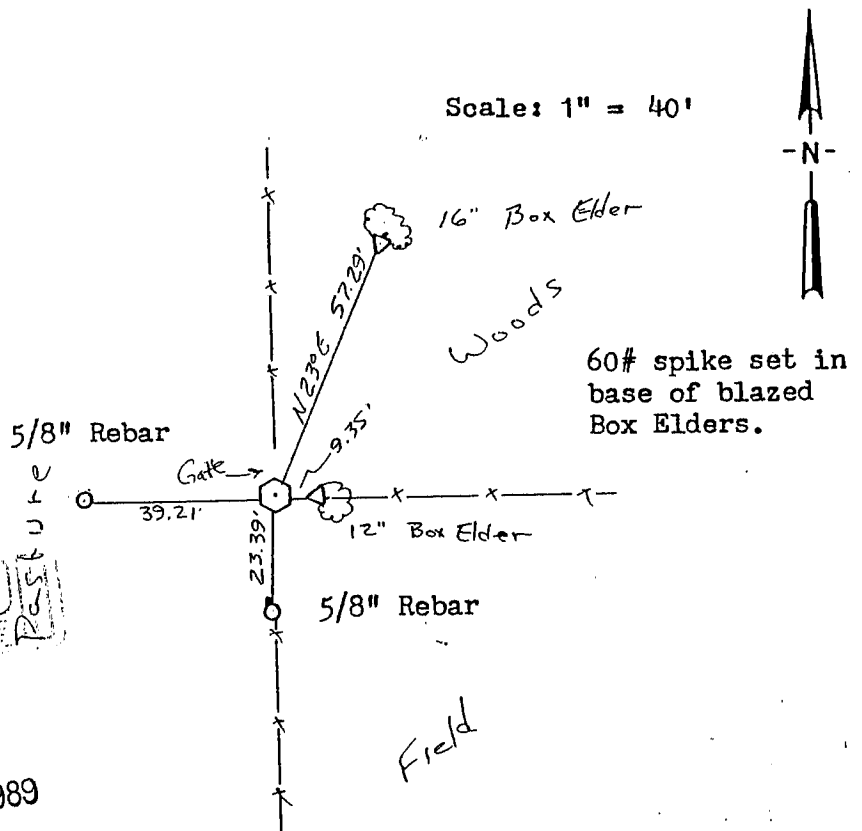
- (b) Describe any record evidence, monument evidence, occupational evidence, testimonial evidence or any other material evidence you considered, and whether the monument was found or placed.

Original corner was set by Lucius Lyon in the 1st 1/4 of 1833. Found no other record. EDM traverse of Section shows the fence corner (N-S, and East) agrees very well with original. Corner so placed.

- (c) In the plan view drawing below, provide reference ties to at least 4 witness monuments, or, if the location is within a municipality, to at least 2 witness monuments. (Witness monuments shall be made of concrete, natural stone, iron or other equally durable material.)
 Describe witness monuments.

- (d) Show a plan view drawing depicting the relevant monuments and reference ties which is sufficient in detail to enable accurate relocation of the corner monument if the corner monument is disturbed. Indicate north.

(Bearings shown are for orientation purposes only)



Corner is Wis. Dept. of Transportation 2" x 30" aluminum monument with sign and post



SEP 13 1989

[Handwritten signature]

- (e) Describe any material discrepancy between the location of the corner as restored or reestablished and the location of that corner as previously restored or reestablished by distance and direction. Show the discrepancy on the plan view drawing under (d), above. Show the distances between the corner as previously restored or reestablished and (1) the corner as restored or reestablished, and (2) to at least 2 of the witness monuments shown on the drawing in (d), above.

NONE

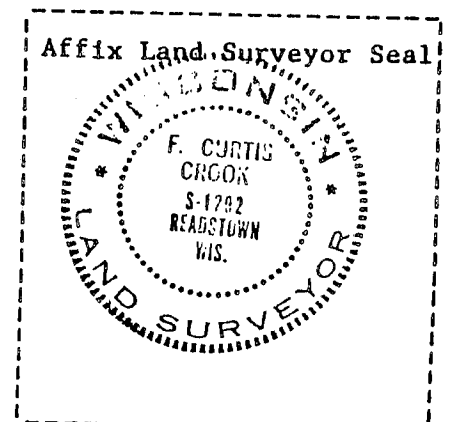
- (f) Was the corner restored through acceptance of (1) an obliterated evidence location, or, (2) a found perpetuated location?

Obliterated evidence location

- (g&h) Was the corner reestablished through lost corner proportionate methods? If so, show the method, including the directions and distances to other public land survey corners used as evidence or used for proportioning in determining the corner location?

No

- (1) I, F. Curtis Crook (type or print name) certify that the corner location shown on this record was determined by me or under my direction and control and that this U.S. Public Land Survey Monument Record is correct and complete to the best of my knowledge and belief.



F. Curtis Crook

5-25-89

CERTIFIED LAND CORNER

Sec. 21, T3N, R4W,

STATE OF WISCONSIN) S.S.
 COUNTY OF GRANT)

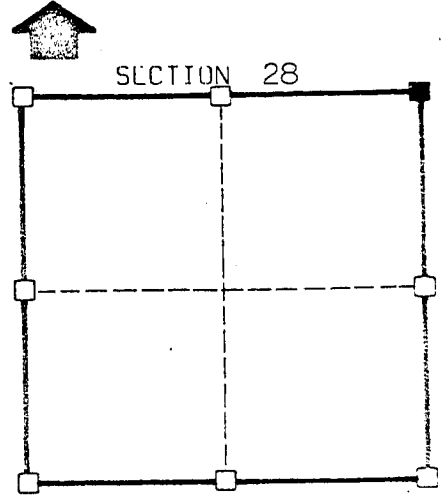
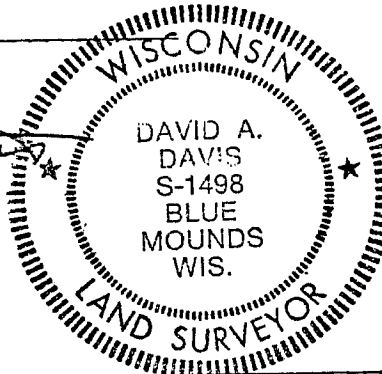
CERTIFICATE

I, David A. Davis, do hereby certify that on the 18 day of May 1981, I found (evidence) ~~(no evidence)~~ of the Northeast corner of Section 21, T3N, R4W, Fourth Principal Meridian, and I re-established said corner according to the Wisconsin Statutes as shown and described hereon.

Dated this 22 day of May 1981

David A. Davis
 registered land surveyor.
 Title

David A. Davis



■ = corner location
 T 3 N R 4 W
 Town of: Waterloo

Seal

History of original corner establishment:

No record since original government survey.

Description of corner evidence found:

Old fence running east-west. Old fence to north of corner.
 Corner set at projected intersection of fences.

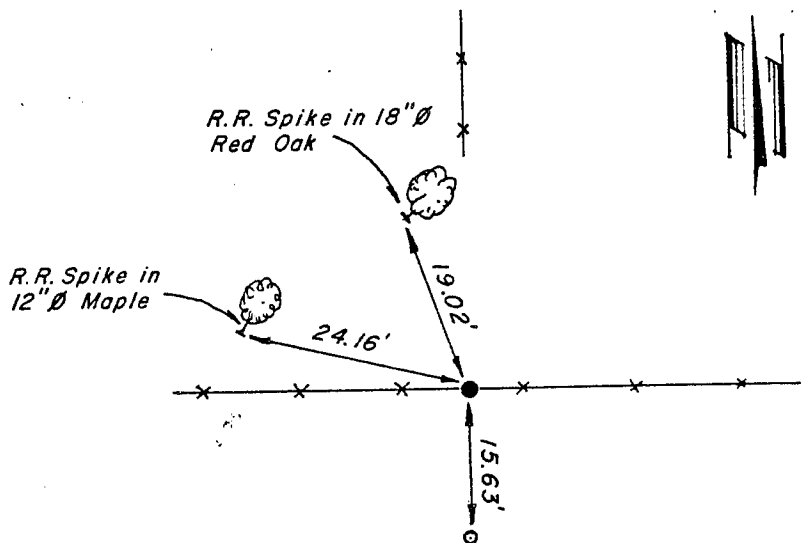
Description of corner and witness monuments, references and accessories used to perpetuate the original or re-established location of this corner:

Witnesses to corner location:

Jim Olson

Garth Althaus

Sketch:



Legend

- NO. 10 (1-1/4" Ø) REBAR
- NO. 6 (3/4" Ø) REBAR
- ☼ TREE
- x-x- FENCELINE

SURVEY CONTROL ORDER

Horizontal

Vertical

WISCONSIN COORDINATE SYSTEM

Corner	East(X)	North(Y)	Elevation(Z)	ZONE
--------	---------	----------	--------------	------

Control Sta. Name

JUL 6 1981