

# U.S. PUBLIC LAND SURVEY MONUMENT RECORD - GRANT COUNTY, WI

Section 24, Town 3 North Range 4 West, Town of Waterloo (a)

NOTE: This form is intended and designed to fulfill all requirements of the Wisconsin Administrative Code Chapter A-E 7.08, U.S. Public Land Survey Monument Record (3) (a) (b) (c) (d) (e) (f) (g) (h) (i).

**CERTIFICATE:** (i)

I, Aaron J. Austin, Wisconsin Professional Land Surveyor, do hereby certify that the corner location on this record was determined by me and/or under my direct supervision and that this U.S. Public Land Survey Monument Record is correct and complete to the best of my knowledge and belief.

Dated this 28th day of February, 2024.

*Aaron J. Austin*  
Aaron J. Austin, S-2922



Grant County Coordinates:  
NAD 83 (2011)  
Northing: 473,881.80  
Easting: 794,919.01

HISTORY OF CORNER ESTABLISHMENT:

Original corner was set in 1833 by Lucius Lyon.  
Robert Lampman set a 3/4" Rebar with a Grant County Aluminum Cap and prepared a Survey Monument Record dated 11-17-1999.

DESCRIPTION OF CORNER EVIDENCE FOUND: (b) (f) (g) (h)

I found a 3/4" Rebar and three witness corners Lampman set. I set one additional witness corner after I verified the Monument's location with G.P.S. and E.D.M. methods.

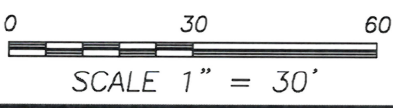
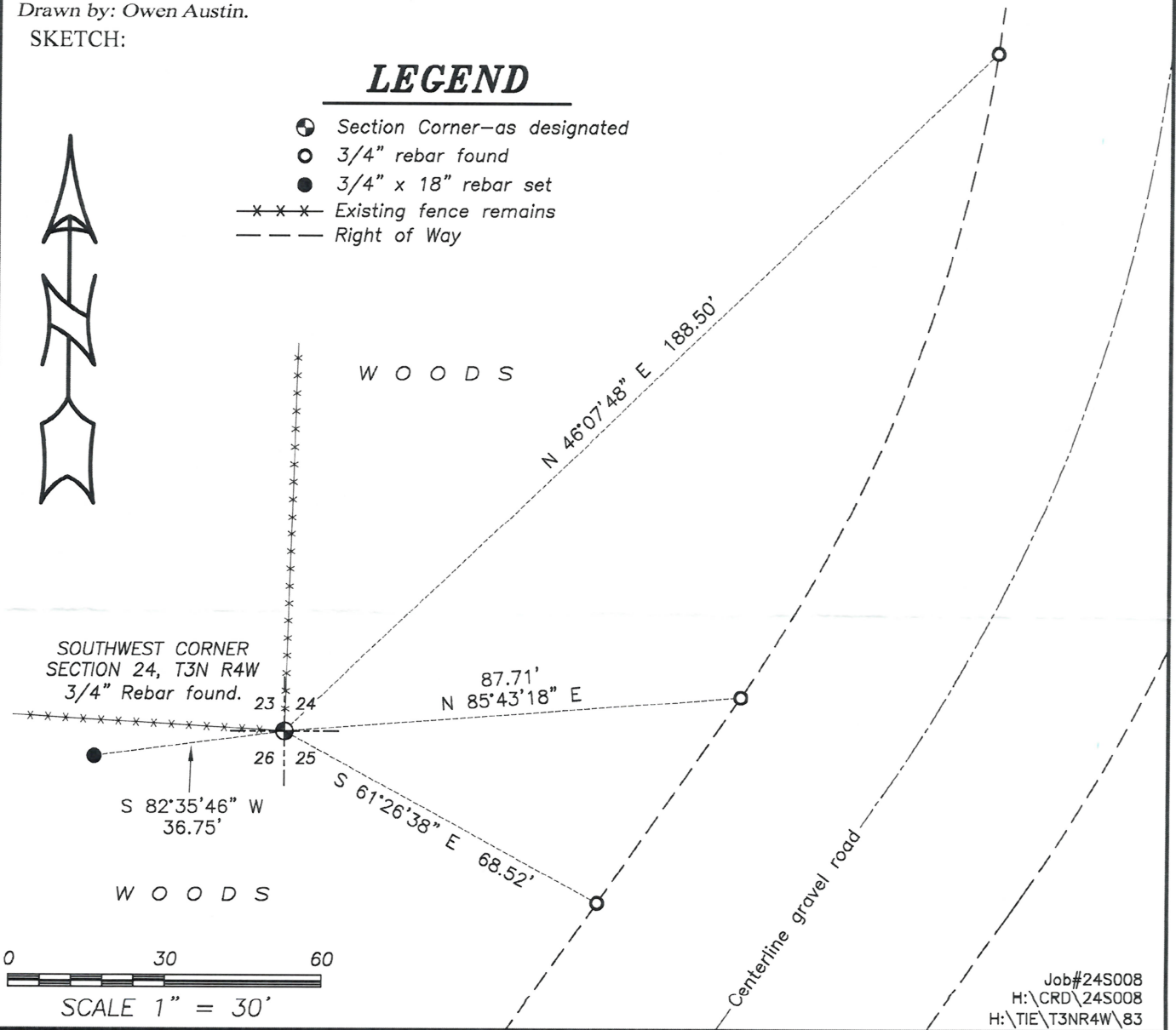
DESCRIPTION OF CORNER AND WITNESS MONUMENTS: references and accessories used to perpetuate the original or re-established location of this corner. (c) (d) (e)

Witnesses to corner location Owen Austin, Tanner Austin.  
Drawn by: Owen Austin.

SKETCH:

## LEGEND

- Section Corner—as designated
- 3/4" rebar found
- 3/4" x 18" rebar set
- Existing fence remains
- Right of Way



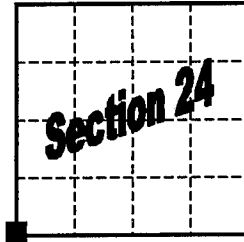
# GRANT COUNTY

## U.S. PUBLIC LAND SURVEY MONUMENT RECORD

Section Corner SW Corner Section 24  
 T 3 N, R 4 W Town of Waterloo

Type of monument Set 3/4" x 30" Iron Bar w/ Grant County Aluminum Cap

Location indicated on sketch - ■



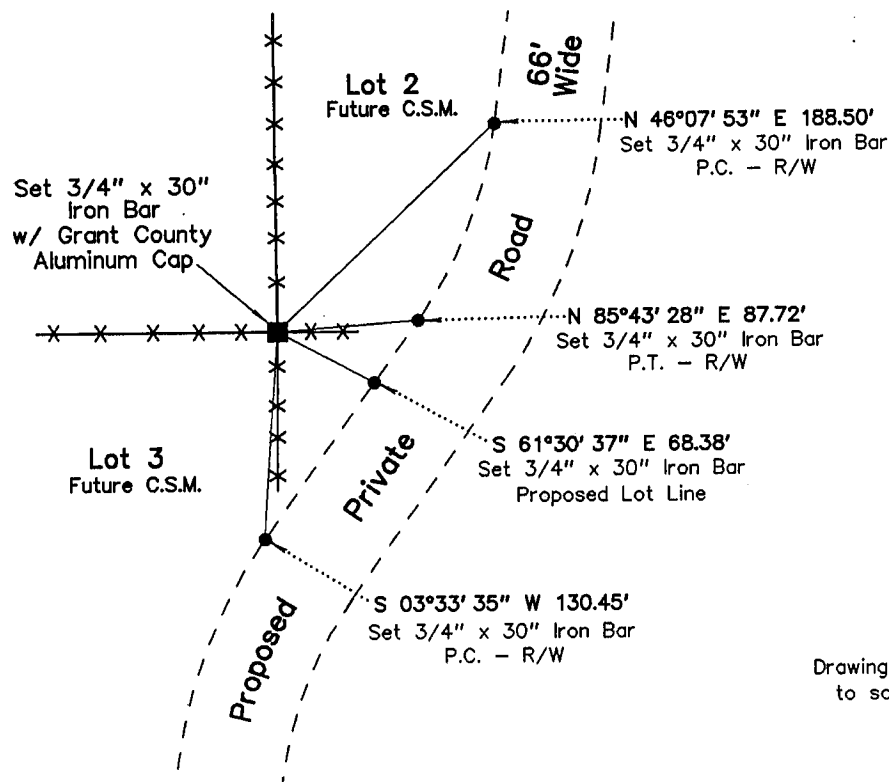
T 3 N, R 4 W

Describe and record evidence, monument evidence, occupational evidence, testimonial evidence or any other material evidence you considered, and whether the monument was found or placed.

Accepted occupational evidence at the corner area to re-establish location.

Grant County Coordinates(survey feet):    N=473881.707    E=794918.918

Show a plan view drawing depicting the relevant monuments, providing reference ties to at least four witness monuments. Describe witness monuments. Show relationship to occupation.



Describe any material discrepancy between the location of the corner as restored or reestablished and the location of that corner as previously restored or reestablished by distance and direction. Show the discrepancy on the plan view drawing. Show the distances between the corner as restored or reestablished, and (1) the corner as previously restored or reestablished – and (2) to at least two of the witness monuments shown on the previous drawing.

N/A

Was the corner restored through acceptance of (1) an obliterated evidence location, (2) a found perpetuated location, or (3) an existent corner location.

(2) a found perpetuated location, as per occupation

Was the corner reestablished through lost corner proportionate methods? If so, show the method including the directions to other public land survey corners used as evidence or used for proportioning in determining the corner location.

N/A

Show the history of record in chronological order from Original Government Survey to present.

(1) Original Government Survey – Lucuis Lyon - 1833

I, Robert M. Lampman, certify that the corner location shown on this record was determined by me or under my direction and control and that this U.S. Public Land Survey Monument Record is correct to the best of my knowledge and belief.

  
Robert M. Lampman R.L.S. S-1296

11-17-1999  
Date

