

34082

U.S. PUBLIC LAND SURVEY MONUMENT RECORD - GRANT COUNTY, WI

Section 25, Town 3 North Range 4 West, Town of Waterloo (a)

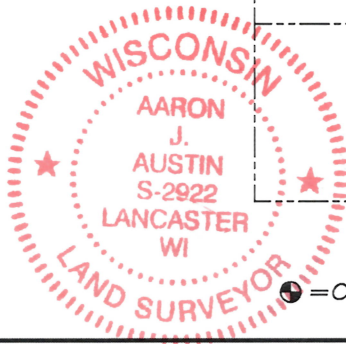
NOTE: This form is intended and designed to fulfill all requirements of the Wisconsin Administrative Code Chapter A-E 7.08, U.S. Public Land Survey Monument Record (3) (a) (b) (c) (d) (e) (f) (g) (h) (i).

CERTIFICATE: (i)

I, Aaron J. Austin, Wisconsin Professional Land Surveyor, do hereby certify that the corner location on this record was determined by me and/or under my direct supervision and that this U.S. Public Land Survey Monument Record is correct and complete to the best of my knowledge and belief.

Dated this 30th day of December, 2024.

Aaron J. Austin
Aaron J. Austin, S-2922



25

Grant County Coordinates:
NAD 83 (2011)
Northing: 473,884.28
Easting: 797,558.57

● = CORNER LOCATION

HISTORY OF CORNER ESTABLISHMENT:

Original corner was set in 1833 by Lucius Lyon.
Robert Lampman set a 3/4" Rebar with a Grant County Aluminum Cap and prepared a Survey Monument Record dated 11-17-1999.

DESCRIPTION OF CORNER EVIDENCE FOUND: (b) (f) (g) (h)

I found the 3/4" Rebar and two witness corners Lampman set. I set two witness corners after I verified the Monument's location with G.P.S. and E.D.M. methods.

DESCRIPTION OF CORNER AND WITNESS MONUMENTS: references and accessories used to perpetuate the original or re-established location of this corner. (c) (d) (e)

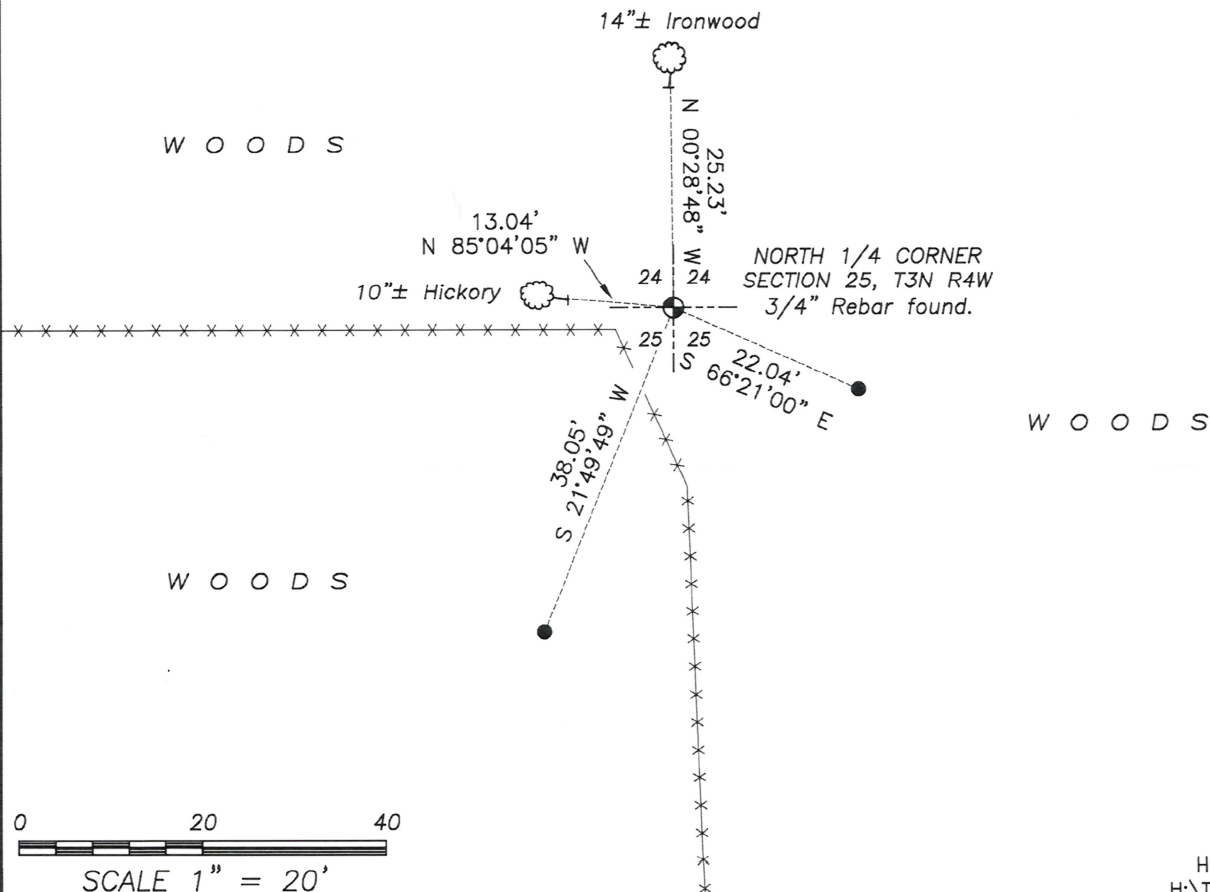
Witnesses to corner location Owen Austin, Tanner Austin.
Drawn by: Owen Austin.

SKETCH:

LEGEND

- Section Corner—as designated
- 3/4" x 18" rebar set
- ⊙ Existing tree with 60 Penny Spike
- x-x-x- Existing fence

W O O D S



Job#24S150
H:\CRD\24S150
H:\TIE\T3NR4W\82

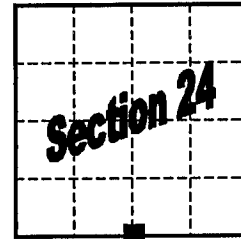
GRANT COUNTY

U.S. PUBLIC LAND SURVEY MONUMENT RECORD

Section Corner S ¼ Corner Section 24
 T 3 N, R 4 W Town of Waterloo

Type of monument Set ¾" x 30" Iron Bar w/ Grant County Aluminum Cap

Location indicated on sketch - ■



T 3 N, R 4 W

Describe and record evidence, monument evidence, occupational evidence, testimonial evidence or any other material evidence you considered, and whether the monument was found or placed.

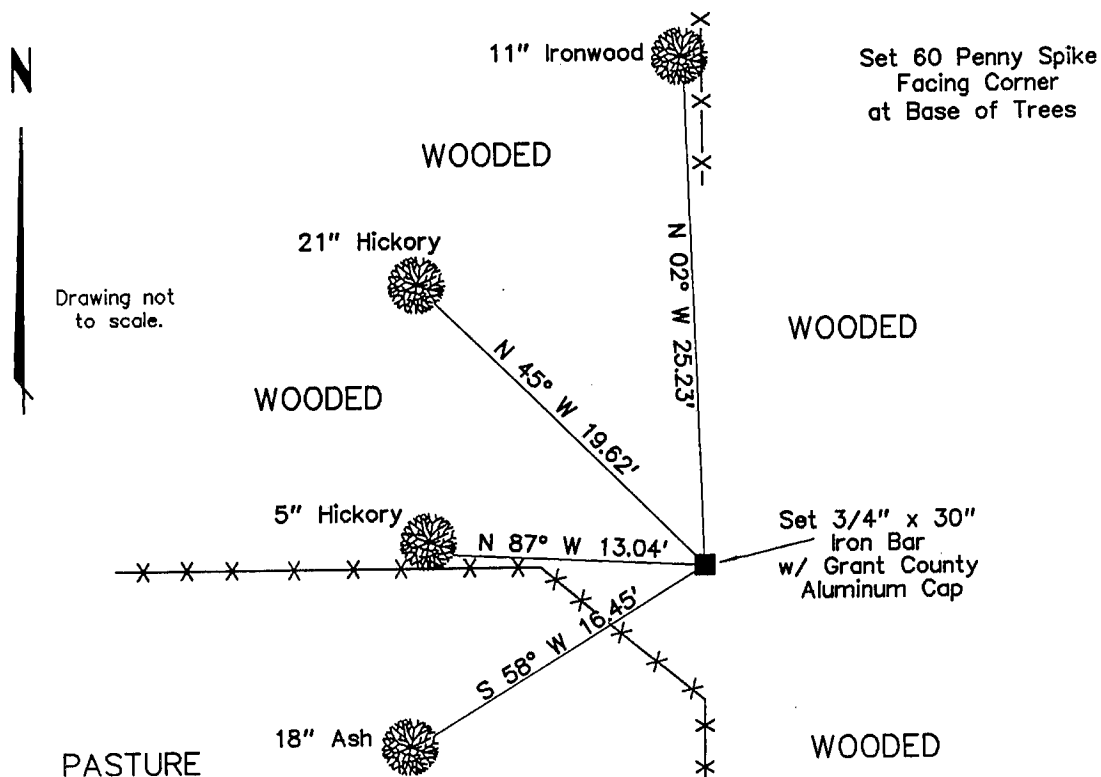
Found existing nail at occupied corner location as per extension of fences from West and South. Accepted the occupied corner location and replaced the found nail with a ¾" x 30" iron bar and Grant County Aluminum Cap.

Notes: Carl B. Shoenhard survey of 1984, depicting a corner location (no monument shown)

Located an iron set over a stone at the Center of Section 25-3N-4W and a ¾" iron re-bar recorded as being 417 feet South from the N ¼ corner of Section 25, both being items from said survey. Determined the position shown on said survey to be approximately 11 feet East and 2.2 feet North of the corner location accepted hereon. Found that occupation along the East line of the SE ¼ of the SW ¼ of Section 24 lines up with the corner location hereon and not the position depicted by Shoenhard. Found that distance from the corner location shown hereon to the SW corner of Section 24 measures 2639.64' (original record – 2632.41'). Also found an occupied forty corner (corner of newer fences) at the SE corner of the SW ¼ of the SW ¼ of Section 24 which falls approximately 14' west of a proration between the location shown hereon and the SW corner of Section 24. Therefore agreeing with the Shoenhard survey would have increased discrepancy with the original distance noted and increased disagreement with the occupied forty corner mentioned.

Grant County Coordinates (survey feet): N=473884.280 E=797558.565

Show a plan view drawing depicting the relevant monuments, providing reference ties to at least four witness monuments. Describe witness monuments. Show relationship to occupation.



Describe any material discrepancy between the location of the corner as restored or reestablished and the location of that corner as previously restored or reestablished by distance and direction. Show the discrepancy on the plan view drawing. Show the distances between the corner as restored or reestablished, and (1) the corner as previously restored or reestablished – and (2) to at least two of the witness monuments shown on the previous drawing.

N/A – No monument found at location of corner as shown on Schoenhard survey of 1984. No monument depicted on said survey map.

See notes under evidence section on front side of record.

Was the corner restored through acceptance of (1) an obliterated evidence location, (2) a found perpetuated location, or (3) an existent corner location.

(2) a found perpetuated location, as per occupation

Was the corner reestablished through lost corner proportionate methods? If so, show the method including the directions to other public land survey corners used as evidence or used for proportioning in determining the corner location.

N/A

Show the history of record in chronological order from Original Government Survey to present.

- (1) Original Government Survey – Lucuis Lyon – 1833
- (2) 1984 – Survey by Carl B. Schoenhard (IIW Associates) – for Gene Reynolds
Schoenhard survey gives a location for this corner but does not indicate any monument existing or set.

I, Robert M. Lampman, certify that the corner location shown on this record was determined by me or under my direction and control and that this U.S. Public Land Survey Monument Record is correct to the best of my knowledge and belief.


Robert M. Lampman R.L.S. S-1296 11-17-1999 Date

