

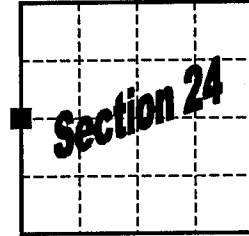
# GRANT COUNTY

## U.S. PUBLIC LAND SURVEY MONUMENT RECORD

Section Corner W 1/4 Corner Section 24  
 T 3 N, R 4 W Town of Waterloo

Type of monument Set 3/4" x 30" Iron Bar w/ Grant County Aluminum Cap

Location indicated on sketch - ■



T 3 N, R 4 W

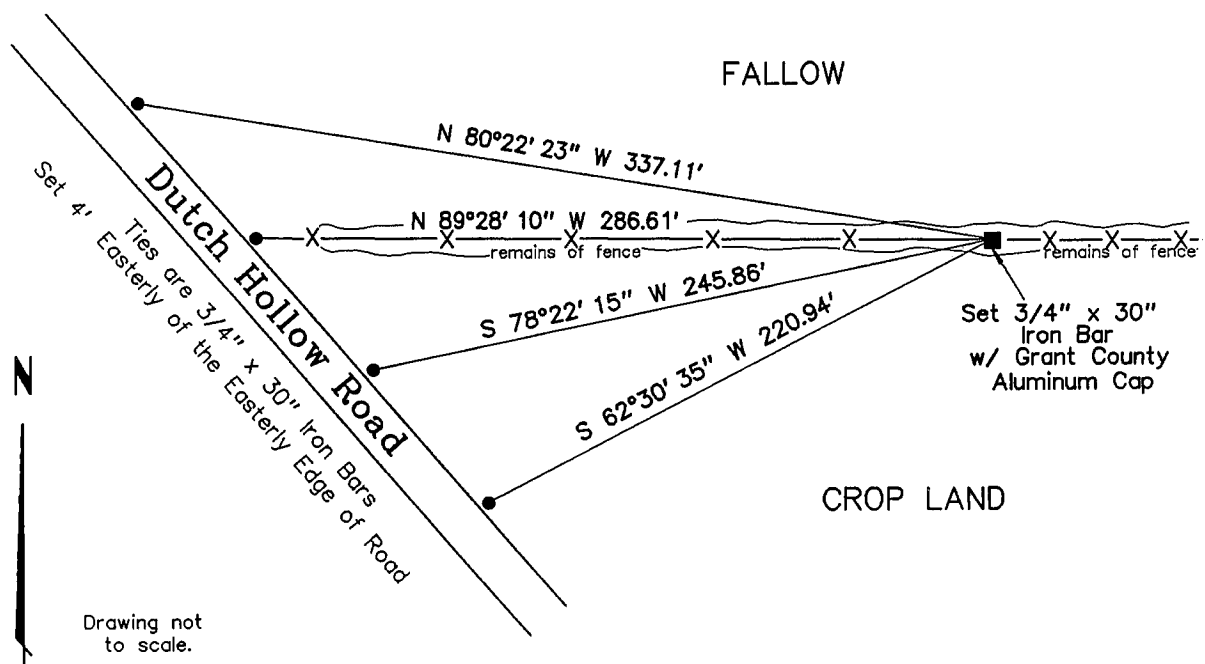
Describe and record evidence, monument evidence, occupational evidence, testimonial evidence or any other material evidence you considered, and whether the monument was found or placed.

Established East/West location for corner on line between the Southwest corner of Section 24 and occupation at the Northwest corner of Section 24. Made verifications to occupation along the West line of the SW 1/4 of Section 24.

Established North/South location for corner according to East-West occupation at the corner area.

**Grant County Coordinates (survey feet):**    N=476551.714    E=794894.380

Show a plan view drawing depicting the relevant monuments, providing reference ties to at least four witness monuments. Describe witness monuments. Show relationship to occupation.



Describe any material discrepancy between the location of the corner as restored or reestablished and the location of that corner as previously restored or reestablished by distance and direction. Show the discrepancy on the plan view drawing. Show the distances between the corner as restored or reestablished, and (1) the corner as previously restored or reestablished – and (2) to at least two of the witness monuments shown on the previous drawing.

N/A

Was the corner restored through acceptance of (1) an obliterated evidence location, (2) a found perpetuated location, or (3) an existent corner location.

(2) a found perpetuated location, as per occupation and other corners of record

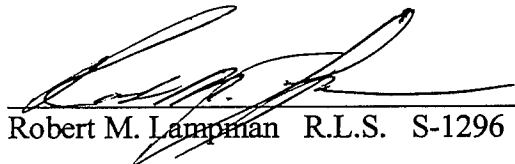
Was the corner reestablished through lost corner proportionate methods? If so, show the method including the directions to other public land survey corners used as evidence or used for proportioning in determining the corner location.

N/A

Show the history of record in chronological order from Original Government Survey to present.

(1) Original Government Survey – Lucuis Lyon - 1833

I, Robert M. Lampman, certify that the corner location shown on this record was determined by me or under my direction and control and that this U.S. Public Land Survey Monument Record is correct to the best of my knowledge and belief.

  
Robert M. Lampman R.L.S. S-1296

11-17-1999  
Date

