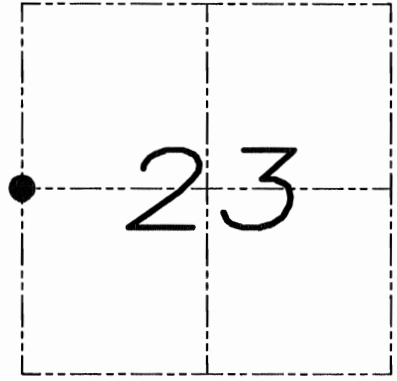


# U.S. PUBLIC LAND SURVEY MONUMENT RECORD

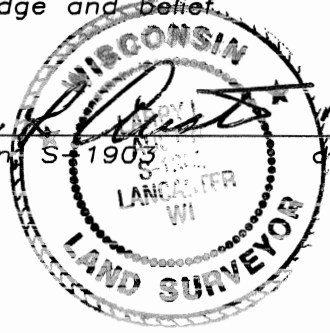
Section 23, Town 3 North Range 4 West, Town of Waterloo, Grant County, Wisconsin

CERTIFICATE

I, Larry L. Austin, do hereby certify that the corner location on this record was determined by me and/or under my direct supervision and that this U.S. public land survey monument record is correct and complete to the best of my knowledge and belief.



● = CORNER LOCATION

*Larry L. Austin*  
 Larry L. Austin, S. 1903 date 7.8.09  


HISTORY OF CORNER

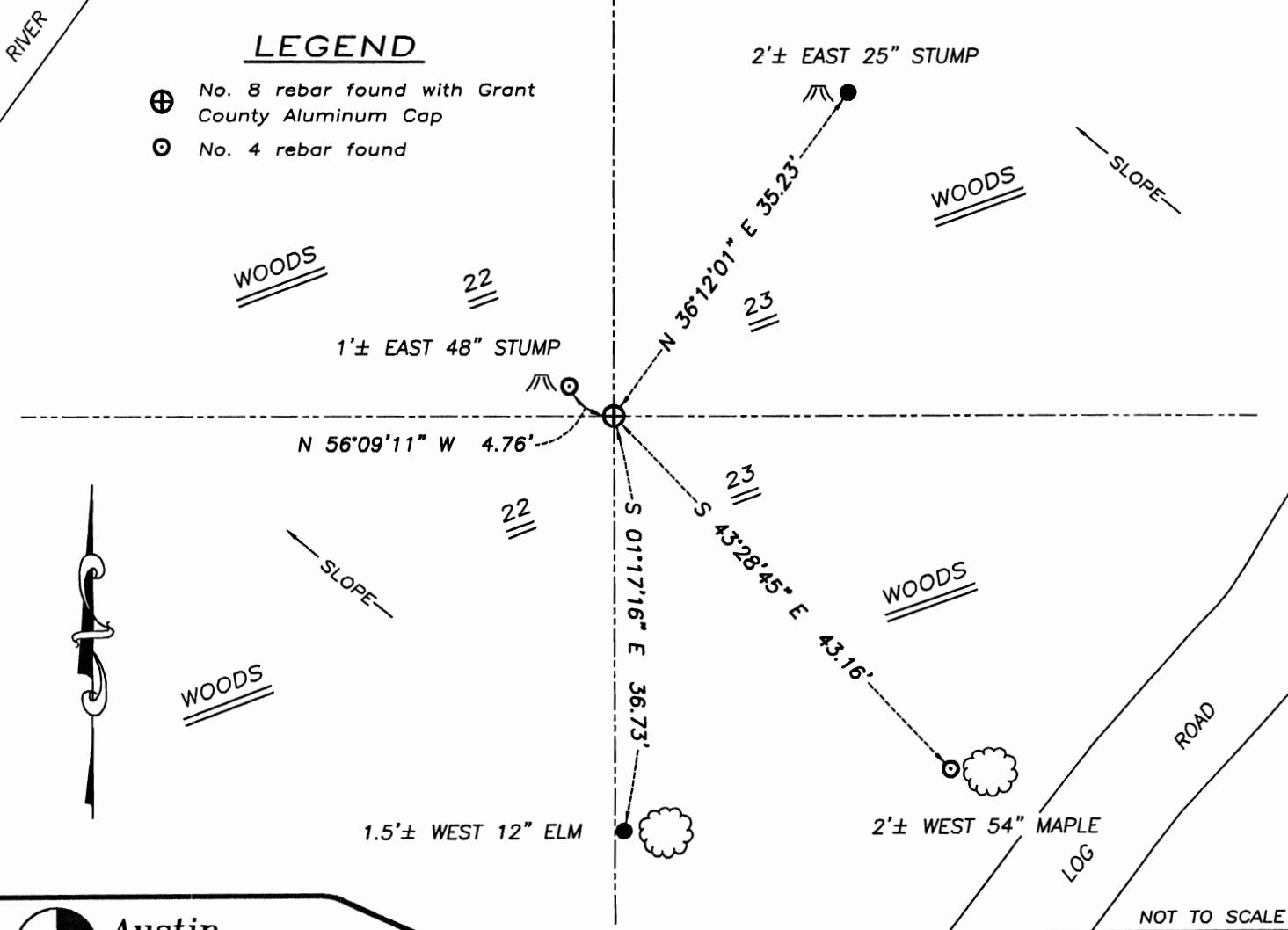
Corner was originally set in the 1st quarter of 1832 by Lyon. In 1999 I set the corner proportionately between the Northwest and Southwest corners. No other record of the corner was found.

CORNER EVIDENCE FOUND

I found the monument I set in 1999 and accepted it after an EDM & GPS traverse of the area.

DESCRIPTION OF CORNER AND WITNESS MONUMENTS, references and accessories used to perpetuate the original or re-established location of this corner. Witnesses to monument location Bobby Sedgwick & Brad Digman & Shelby Blindert

SKETCH:



**Austin Engineering LLC**

4211 HWY 81 E, LANCASTER, WI 53813  
 PHONE 608-723-6363 FAX 608-723-6702

JOB NUMBER 09S036-MEWHIRTER  
 FIELDBOOK: TDSR, 2802 DRAWN BY: SW AUSTIN  
 G:\T3NR4W\15A APPROVED: LL AUSTIN  
 H:\TIE\T3NR4W\78