

GRANT COUNTY CERTIFIED LAND CORNER

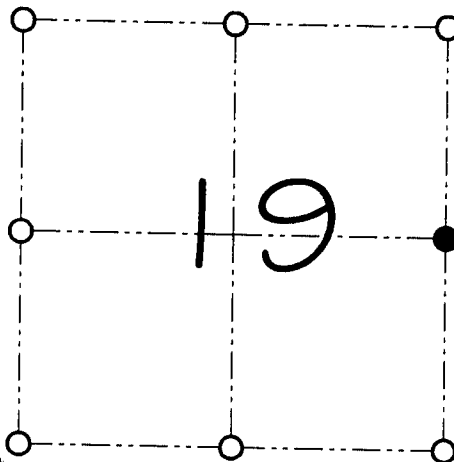
CORNER NUMBER 75

CERTIFICATE:

I, Larry L. Austin, do hereby certify that on the 11th day of July, 2000, I found no evidence of the East 1/4 corner of Section 19, Town 3 North, Range 4 West, of the 4th Principal Meridian, and I re-established said corner according to the Wisconsin statutes as shown and described hereon.

Dated this 28th day of July, 2000

Larry L. Austin
Larry L. Austin S-1903



● = CORNER LOCATION
EAST 1/4 CORNER OF SECTION 19, T 3 N R 4 W TOWN OF WATERLOO

HISTORY OF ORIGINAL CORNER ESTABLISHMENT:

Corner was originally set in 1833 by Lucius Lyon. In 1855 Overton tied to the corner. In 1868 Barber also tied to the corner.

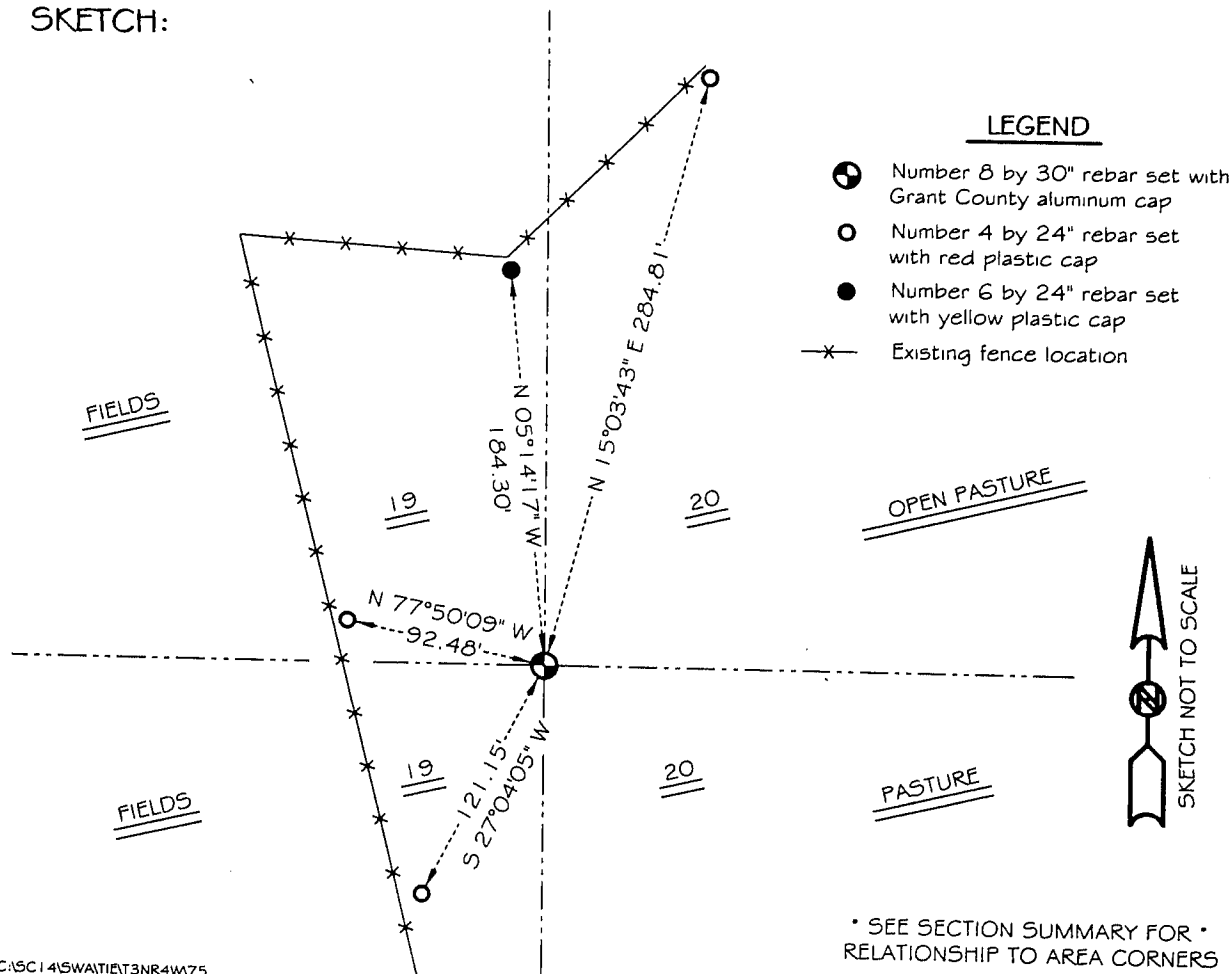
DESCRIPTION OF CORNER EVIDENCE FOUND:

I found no evidence of the location of the corner. I reset the corner based on a straight line proportion between the Northeast and Southeast corners of Section 19. Verified this location using EDM & GPS methods.

DESCRIPTION OF CORNER AND WITNESS MONUMENTS, references and accessories used to perpetuate the original or re-established location of this corner

WITNESS TO THE CORNER LOCATION: BOBBY SEDGWICK & SHELBY BLINDERT

SKETCH:



LEGEND

- Number 8 by 30" rebar set with Grant County aluminum cap
- Number 4 by 24" rebar set with red plastic cap
- Number 6 by 24" rebar set with yellow plastic cap
- ✕ Existing fence location



* SEE SECTION SUMMARY FOR *
RELATIONSHIP TO AREA CORNERS