

# GRANT COUNTY CERTIFIED LAND CORNER

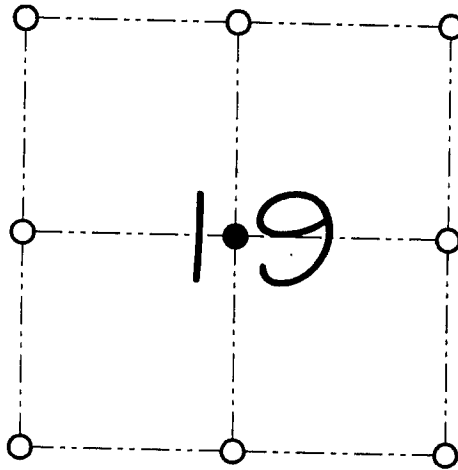
CORNER NUMBER 74A

**CERTIFICATE:**

I, Larry L. Austin, do hereby certify that on the 7th day of July, 2000, I found no evidence of the Center 1/4 of Section 19, Town 3 North, Range 4 West, of the 4th Principal Meridian, and I re-established said corner according to the Wisconsin statutes as shown and described hereon.

Dated this 28th day of July, 2000

*Larry L. Austin*  
Larry L. Austin S-1903



● = CORNER LOCATION

CENTER OF  
SECTION 19, T 3 N R 4 W  
TOWN OF WATERLOO

**HISTORY OF ORIGINAL CORNER ESTABLISHMENT:**

Corner was never originally set. In 1855 Overton tied to the corner. In 1868 Barber tied to the corner. In 1896 Sampson tied to the corner.

**DESCRIPTION OF CORNER EVIDENCE FOUND:**

I reset the corner at the intersection of quarter lines. Verified it's location using EDM & GPS methods.

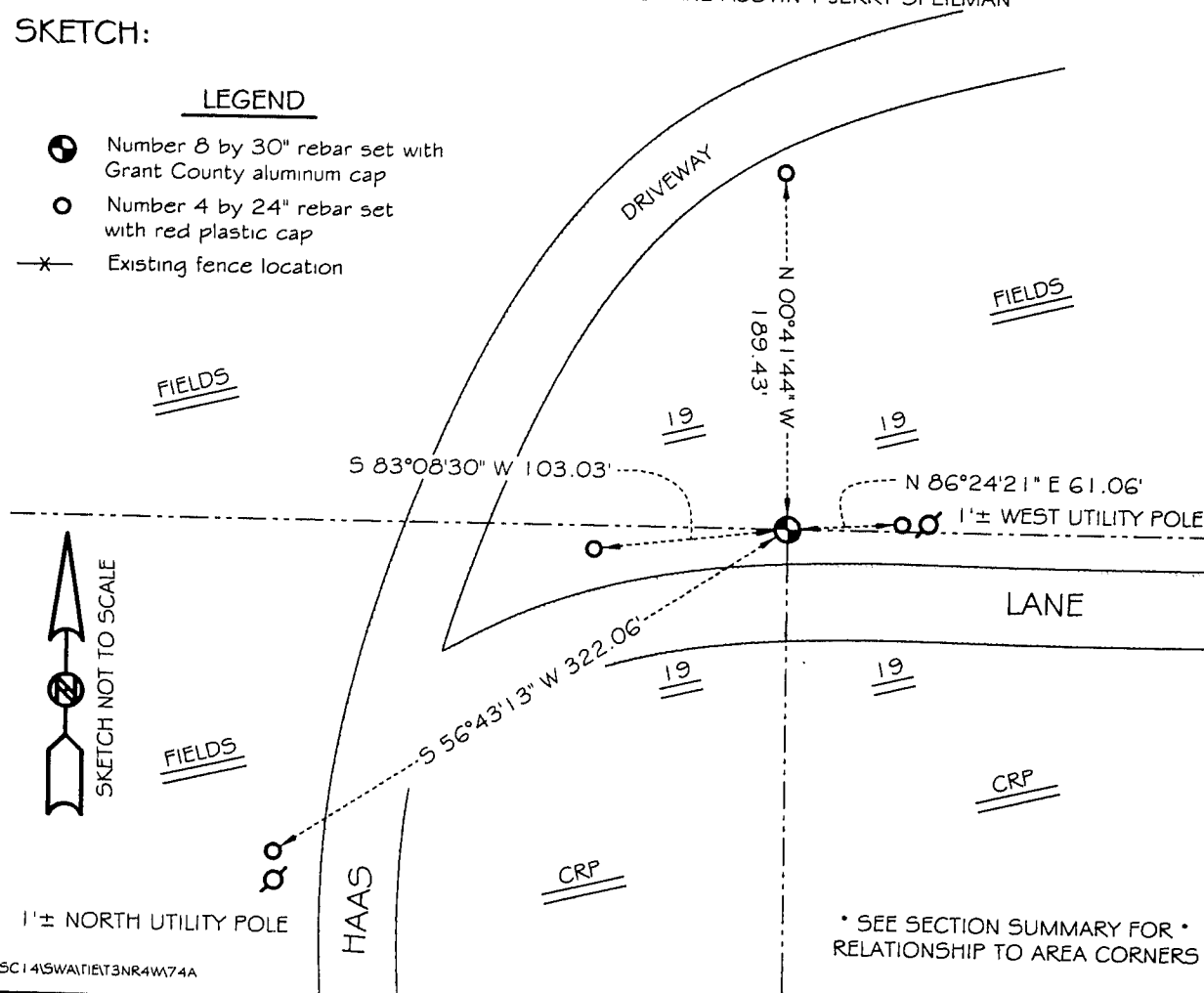
**DESCRIPTION OF CORNER AND WITNESS MONUMENTS, references and accessories used to perpetuate the original or re-established location of this corner**

WITNESS TO THE CORNER LOCATION: SHANE AUSTIN & JERRY SPEILMAN

**SKETCH:**

LEGEND

- Number 8 by 30" rebar set with Grant County aluminum cap
- Number 4 by 24" rebar set with red plastic cap
- x— Existing fence location



• SEE SECTION SUMMARY FOR •  
RELATIONSHIP TO AREA CORNERS