

U.S. PUBLIC LAND SURVEY MONUMENT RECORD - GRANT COUNTY, WI

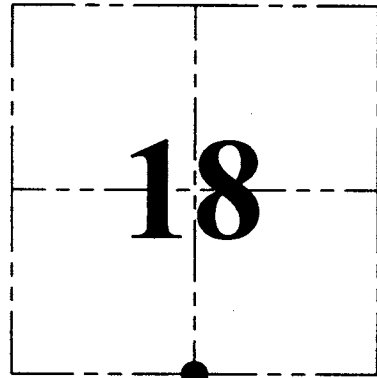
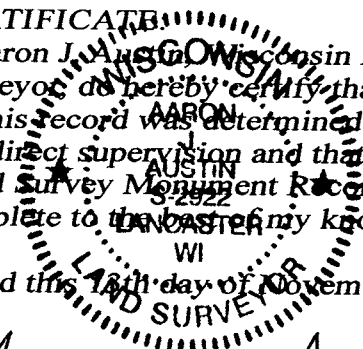
Section 18, Town 3 North Range 4 West, Town of Waterloo

CERTIFICATE

I, Aaron J. Austin, Wisconsin Professional Land Surveyor do hereby certify that the corner location on this record was determined by me and/or under my direct supervision and that this U.S. Public Land Survey Monument Record is correct and complete to the best of my knowledge and belief.

Dated this 18th day of November, 2015.

Aaron J. Austin
 Aaron J. Austin, S-2922



● = CORNER LOCATION

HISTORY OF CORNER ESTABLISHMENT:

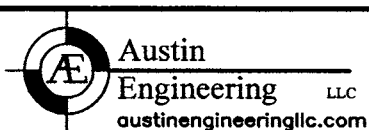
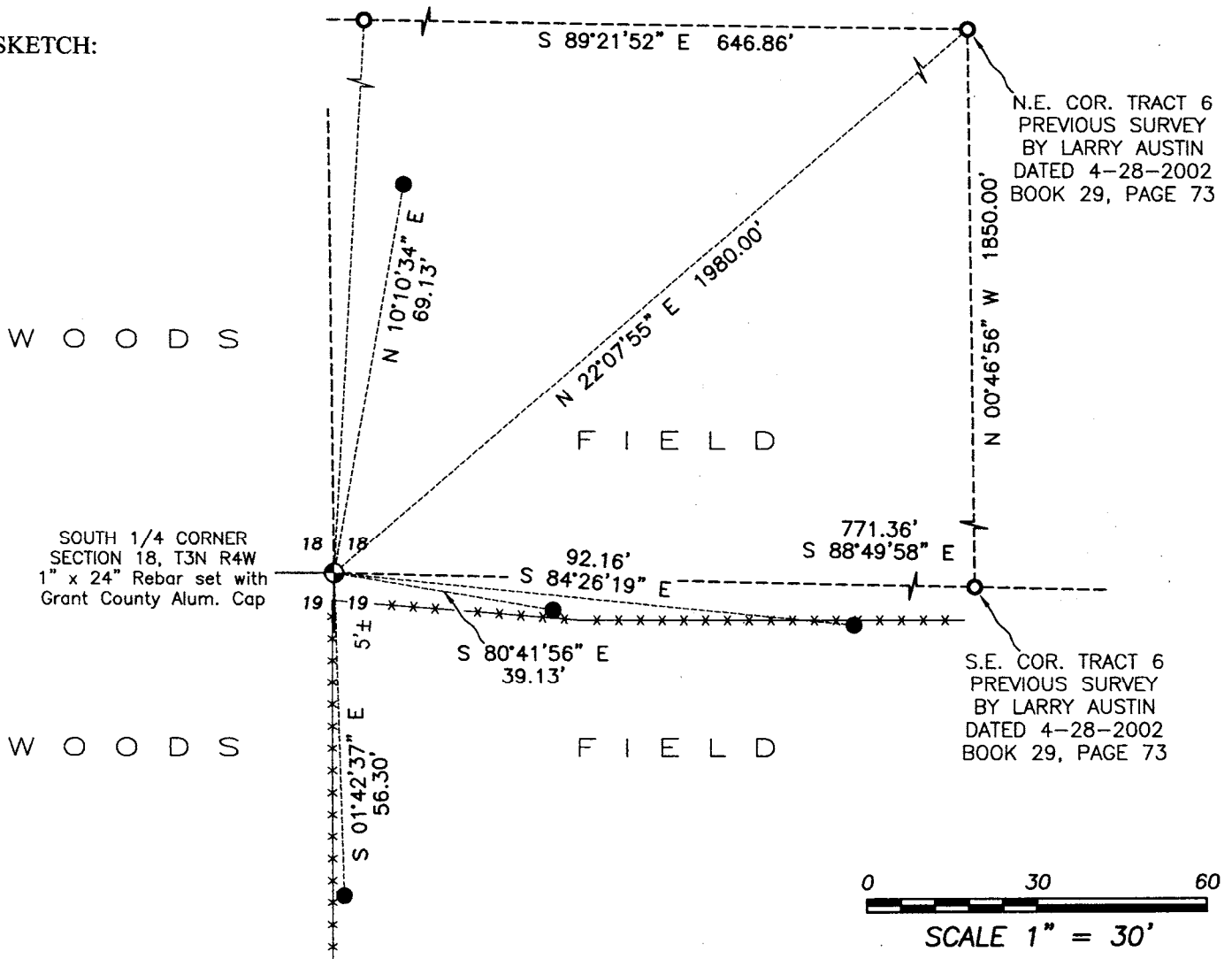
1833-Lucius Lyon set original corner.
 2000-Larry Austin reset the corner and prepared a Certified Land Corner Record.

DESCRIPTION OF CORNER EVIDENCE FOUND:

I did not recover the corner or any ties set by Larry Austin. I reset the corner based upon measurements to Tract 6 of a Survey prepared by Larry Austin dated 4-28-2002, filed in Book 29, Page 73. A 1" Rebar with a Grant County Aluminum Cap was set and 4 witness corners after I verified its location with G.P.S. and E.D.M. methods.

DESCRIPTION OF CORNER AND WITNESS MONUMENTS, references and accessories used to perpetuate the original or re-established location of this corner. Witnesses to corner location Shane Austin.

SKETCH:



4211 HWY 81 E, LANCASTER, WI 53813
 PHONE: 608-723-6363 FAX: 608-723-6702

JOB NO: 15s222
 H:\CRD\15s222
 H:\TIE\T3NR4W\72(B)

FIELDBOOK: TDSR
 DRAWN BY: AJ AUSTIN
 CREW: SW AUSTIN

GRANT COUNTY CERTIFIED LAND CORNER

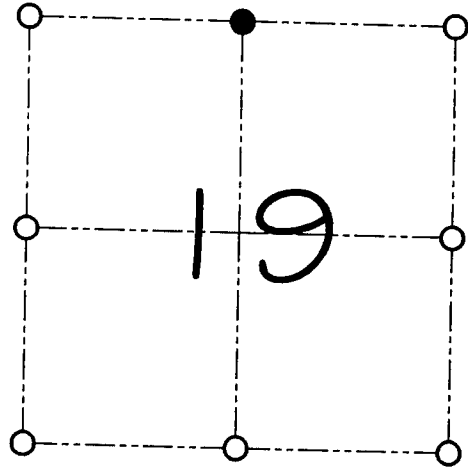
CORNER NUMBER 72

CERTIFICATE:

I, Larry L. Austin, do hereby certify that on the 7th day of July, 2000, I found evidence of the North 1/4 corner of Section 19, Town 3 North, Range 4 West, of the 4th Principal Meridian, and I re-established said corner according to the Wisconsin statutes as shown and described hereon.

Dated this 28th day of July, 2000

Larry L. Austin
Larry L. Austin S-1903



● = CORNER LOCATION

NORTH 1/4 CORNER OF
SECTION 19, T 3 N R 4 W
TOWN OF WATERLOO

HISTORY OF ORIGINAL CORNER ESTABLISHMENT:

Corner was originally set in 1833 by Lucius Lyon. In 1855 Overton tied to the corner. In 1868 Barber tied to the corner. In 1896 Sampson tied to the corner.

DESCRIPTION OF CORNER EVIDENCE FOUND:

I found an occupied fence corner and accepted its location after an EDM & GPS traverse of the area.

DESCRIPTION OF CORNER AND WITNESS MONUMENTS, references and accessories used to perpetuate the original or re-established location of this corner

WITNESS TO THE CORNER LOCATION: SHANE AUSTIN & JERRY SPEILMAN

SKETCH:



WOODS

FIELDS

HILL

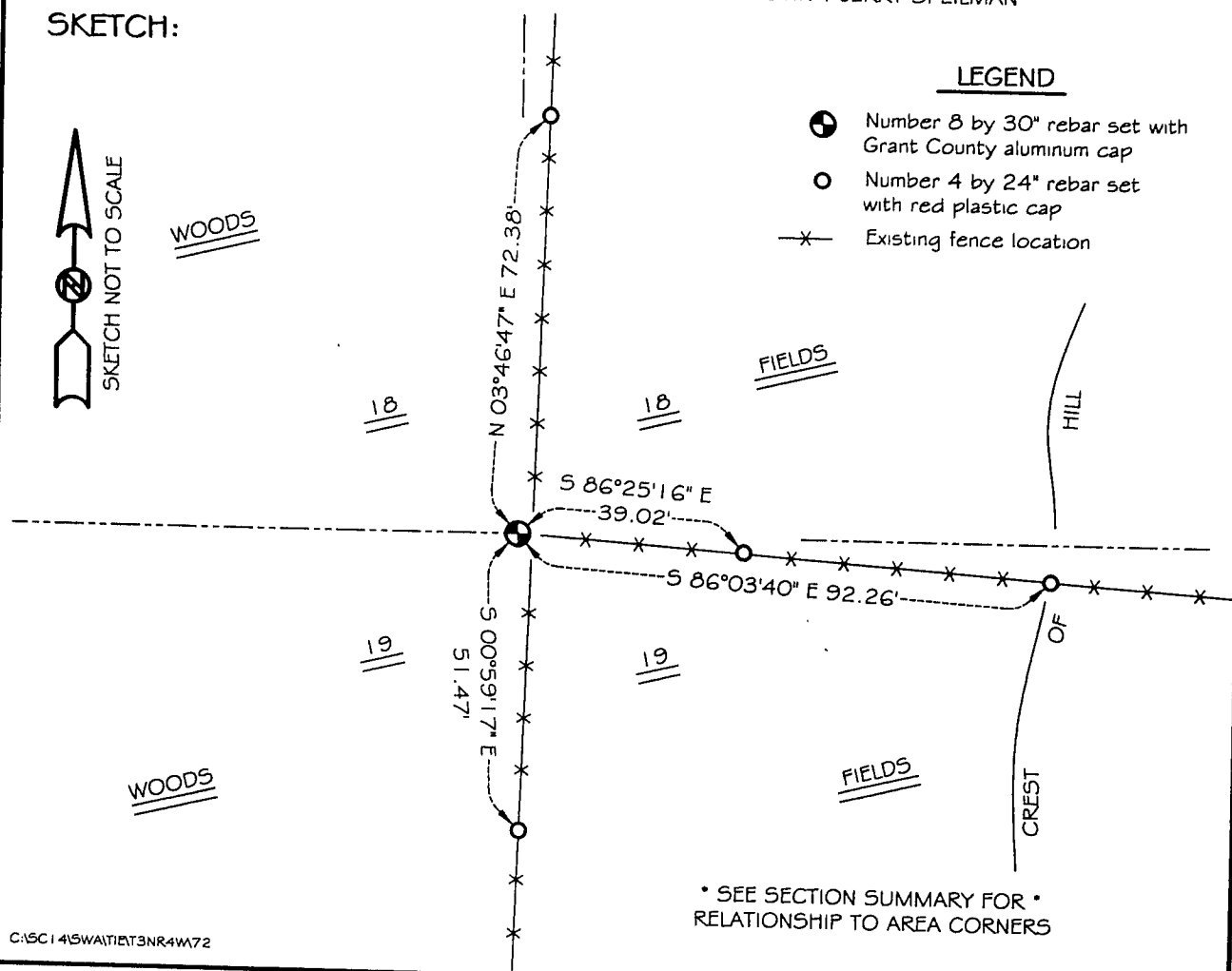
WOODS

FIELDS

CREST

LEGEND

- ⊕ Number 8 by 30" rebar set with Grant County aluminum cap
- Number 4 by 24" rebar set with red plastic cap
- x— Existing fence location



• SEE SECTION SUMMARY FOR •
RELATIONSHIP TO AREA CORNERS