

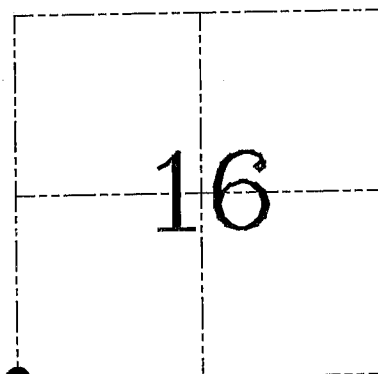
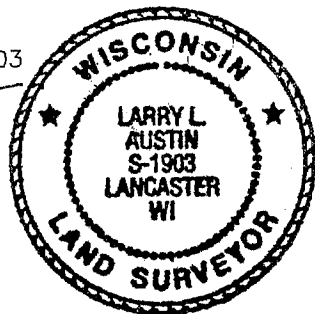
U.S. PUBLIC LAND SURVEY MONUMENT RECORD – GRANT COUNTY, WI
Section 16, Town 3 North Range 4 West, Town of Waterloo

CERTIFICATE

I, Larry L. Austin, do hereby certify that the corner location on this record was determined by me and/or under my direct supervision and that this U.S. public land survey monument record is correct and complete to the best of my knowledge and belief.

Dated this 5th day of August, 2003

Larry L. Austin
 Larry L. Austin S-1903



● = CORNER LOCATION

HISTORY OF CORNER ESTABLISHMENT

Corner was originally set in 1833 by Lyon.
 No other record of the corner was found.

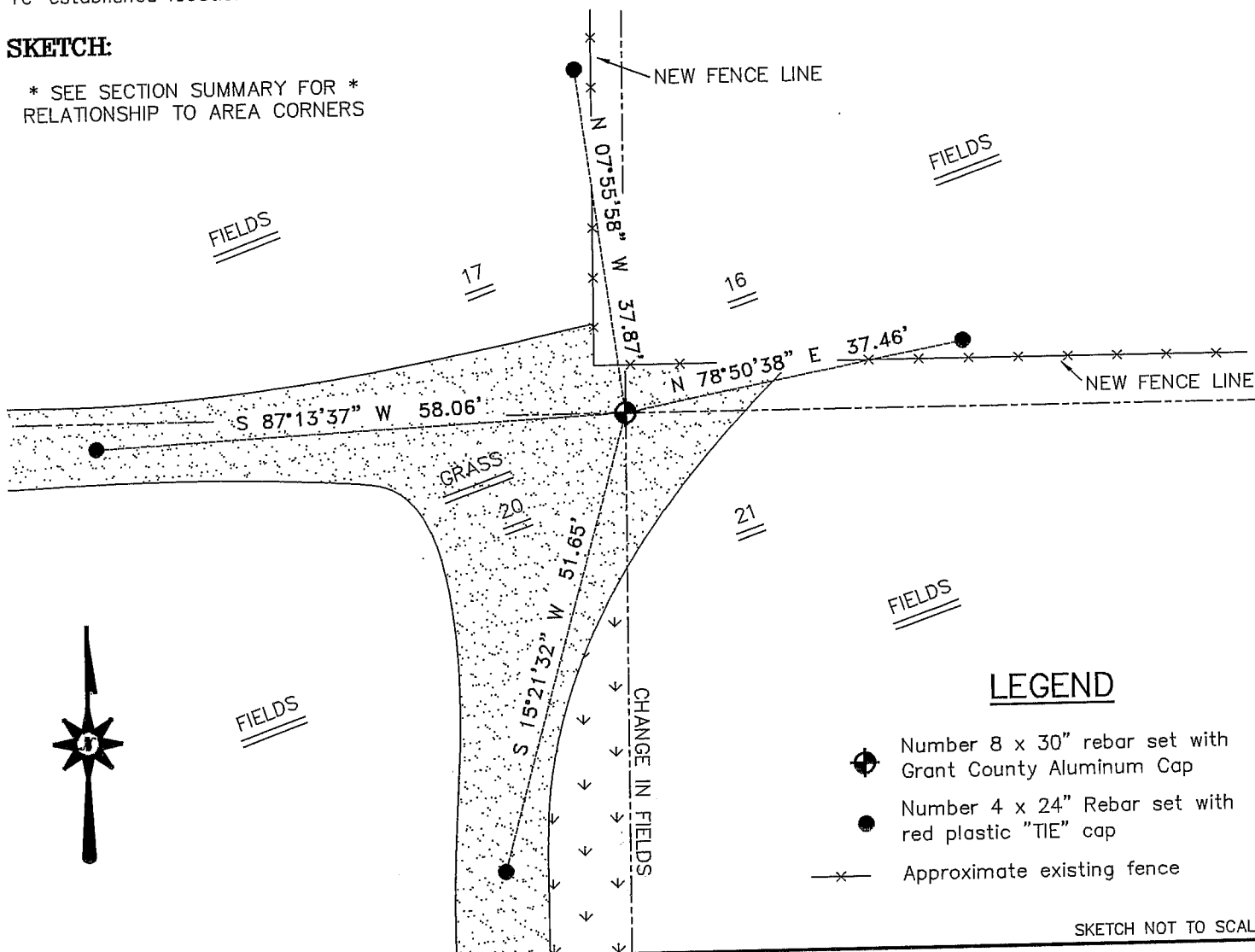
DESCRIPTION OF CORNER EVIDENCE FOUND

The corner was set based on the projection of occupation near the corner.
 Verified this location using EDM & GPS methods.

DESCRIPTION OF CORNER AND WITNESS MONUMENTS, references and accessories used to perpetuate the original or re-established location of this corner. Witnesses to corner location Bobby Sedgwick & Shelby Blindert & Brad Digman

SKETCH:

* SEE SECTION SUMMARY FOR *
 RELATIONSHIP TO AREA CORNERS



SKETCH NOT TO SCALE

AUSTIN ENGINEERING, LLC

4211 HWY 81 EAST, LANCASTER, WI 53813
 PHONE 608-723-6363 FAX 608-723-6702

FIELDBOOK: TDS RNGR, 9921
 G: \T3NR4W\15A
 H: \TIE\T3NR4W\56
 JOB NUMBER 03S209

DRAWN BY: SW AUSTIN
 APPROVED: LL AUSTIN

CORNER NUMBER 69