

CERTIFIED LAND CORNER

Section 21, T3N, R4W

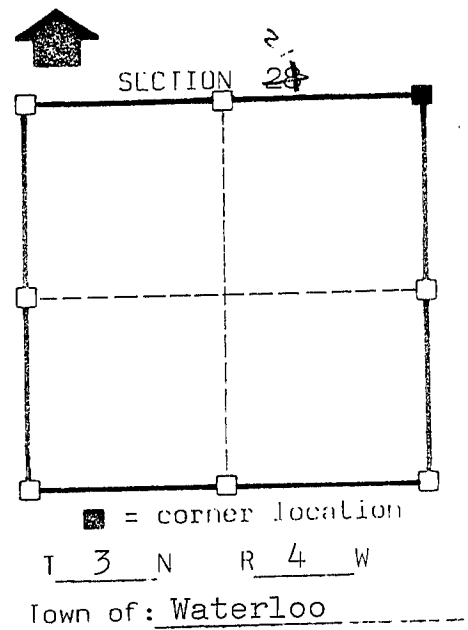
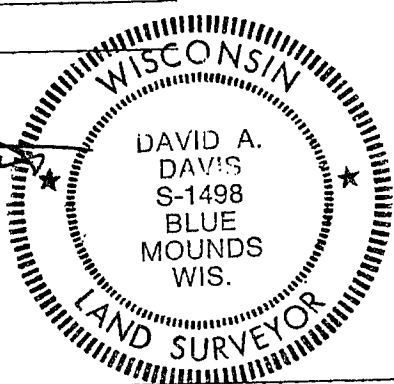
STATE OF WISCONSIN)
 COUNTY OF GRANT) S.S.

CERTIFICATE
 I, David A. Davis, do hereby certify
 that on the 18 day of May 1981,
 I found (evidence) ~~(no evidence)~~ of the Northeast
 corner of Section 21, T 3 N, R 4 W,
 Fourth Principal Meridian, and I re-established
 said corner according to the Wisconsin Statutes
 as shown and described hereon.

Dated this 22 day of May 1981

David A. Davis
 registered land surveyor.
 Title

David Althaus



Seal

History of original corner establishment:

No record since original government survey.

Description of corner evidence found:

Old fence running east-west. Old fence to north of corner.
 Corner set at projected intersection of fences.

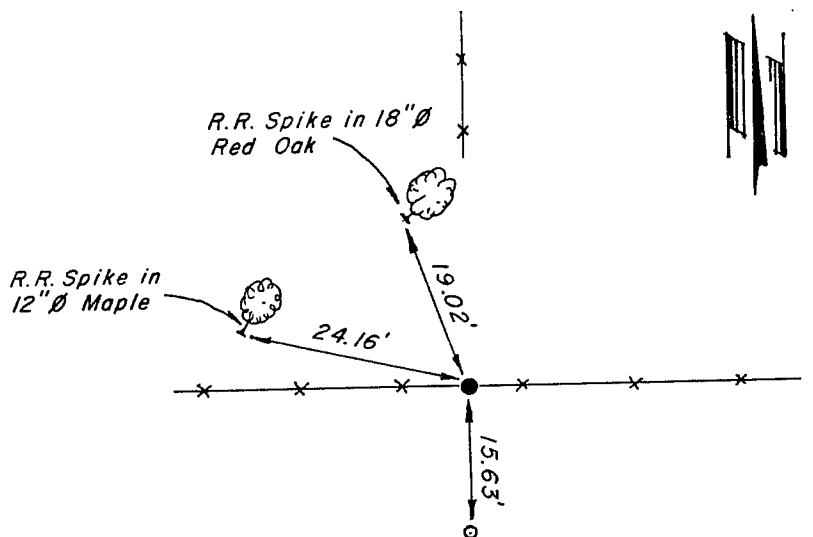
Description of corner and witness monuments, references and accessories used to perpetuate the original or re-established location of this corner:

Witnesses to corner location:

Jim Olson

Garth Althaus

Sketch:



Legend

- NO. 10 (1-1/4" Ø) REBAR
- NO. 6 (3/4" Ø) REBAR
- ☺ TREE
- x-x- FENCELINE

SURVEY CONTROL ORDER

Horizontal

Vertical

WISCONSIN COORDINATE SYSTEM

Corner	East.(X)	North(Y)	Elevation(Z)	Zone
Control Sta. Name				

JUL 6 1981