

GRANT COUNTY CERTIFIED LAND CORNER

CORNER NUMBER 66

CERTIFICATE:

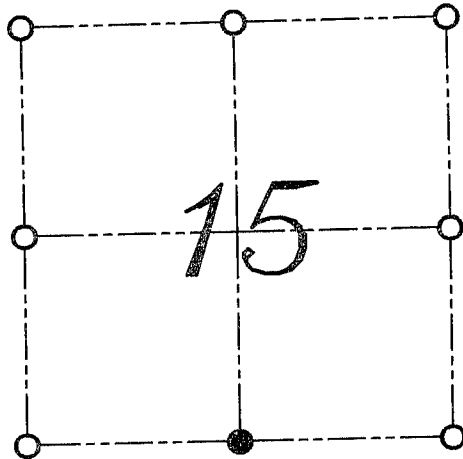
I, LARRY L. AUSTIN, DO HEREBY CERTIFY THAT ON 19th DAY OF NOVEMBER, 1999, I FOUND EVIDENCE OF THE WEST 1/4 CORNER OF SECTION 15, TOWN 3 NORTH, RANGE 4 WEST, OF THE FOURTH PRINCIPAL MERIDIAN, AND I RE-ESTABLISHED SAID CORNER ACCORDING TO THE WISCONSIN STATUTES AS SHOWN AND DESCRIBED HEREON.

DATED THIS 29th DAY OF NOVEMBER 1999

Larry L. Austin
LARRY L. AUSTIN S-1903



SEAL



● = CORNER LOCATION

SOUTH 1/4 CORNER OF
SECTION 15, T 3 N R 4 W
TOWN OF WATERLOO

HISTORY OF ORIGINAL CORNER ESTABLISHMENT:

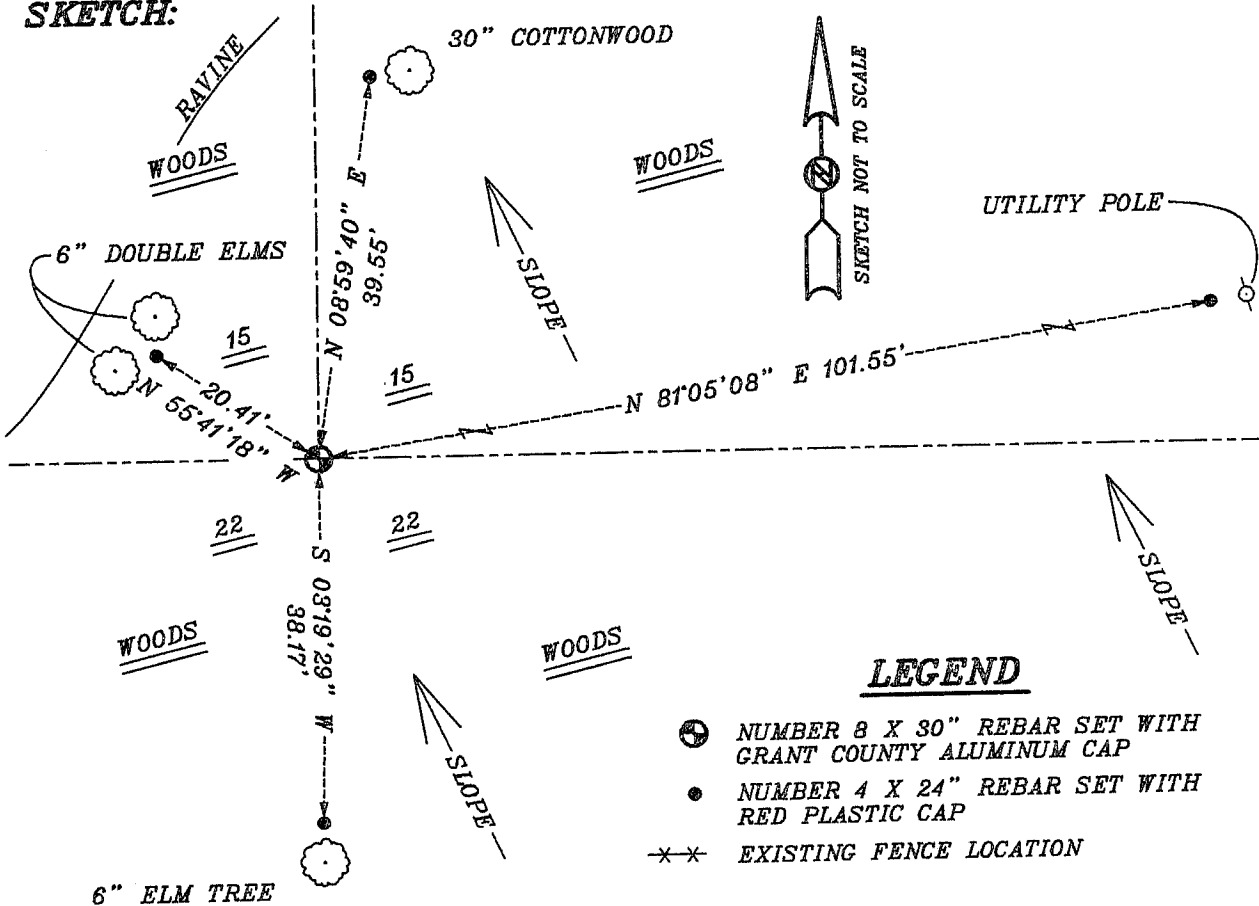
CORNER WAS SET IN 1833 BY LUCIUS LYON.
IN 1847 GEO STUNTZ TIED TO THE CORNER WITH NO MENTION OF MONUMENT.
IN 1877 JOEL BARBER TIED TO THE CORNER WITH NO MENTION OF MONUMENT.

DESCRIPTION OF CORNER EVIDENCE FOUND:

I RESET THE CORNER BASED ON PROPORTIONING METHODS DO TO
LACK OF EVIDENCE. VERIFIED THIS LOCATION USING E.D.M. AND G.P.S. METHODS.

**DESCRIPTION OF CORNER AND WITNESS MONUMENTS, REFERENCES AND ACCESSORIES
USED TO PERPETUATE THE ORIGINAL OR RE-ESTABLISHED LOCATION OF THIS CORNER:**
WITNESS TO THE CORNER LOCATION: BOBBY SEDGWICK ; SHELBY BLINDERT

SKETCH:



LEGEND

- NUMBER 8 X 30" REBAR SET WITH GRANT COUNTY ALUMINUM CAP
- NUMBER 4 X 24" REBAR SET WITH RED PLASTIC CAP
- EXISTING FENCE LOCATION