

U.S. PUBLIC LAND SURVEY MONUMENT RECORD - GRANT COUNTY, WI

Section 23, Town 3 North Range 4 West, Town of Waterloo (a)

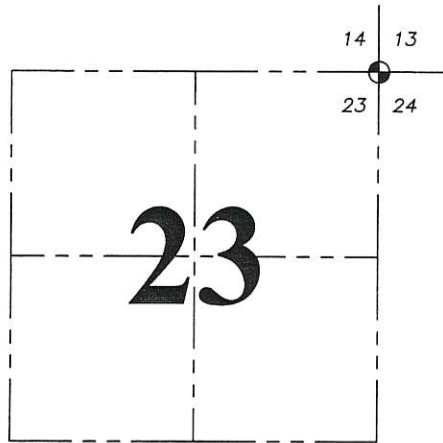
NOTE: This form is intended and designed to fulfill all requirements of the Wisconsin Administrative Code Chapter A-E 7.08, U.S. Public Land Survey Monument Record (3) (a) (b) (c) (d) (e) (f) (g) (h) (i).

CERTIFICATE: (i)

I, Aaron J. Austin, Wisconsin Professional Land Surveyor, do hereby certify that the corner location on this record was determined by me and/or under my direct supervision and that this U.S. Public Land Survey Monument Record is correct and complete to the best of my knowledge and belief.

Dated this 1st day of August, 2018.

Aaron J. Austin
Aaron J. Austin, S-2922



⊕ = CORNER LOCATION

Grant County Coordinates:
NAD 83 (2011)
Northing: 479,200.16
Easting: 794,870.25

HISTORY OF CORNER ESTABLISHMENT:

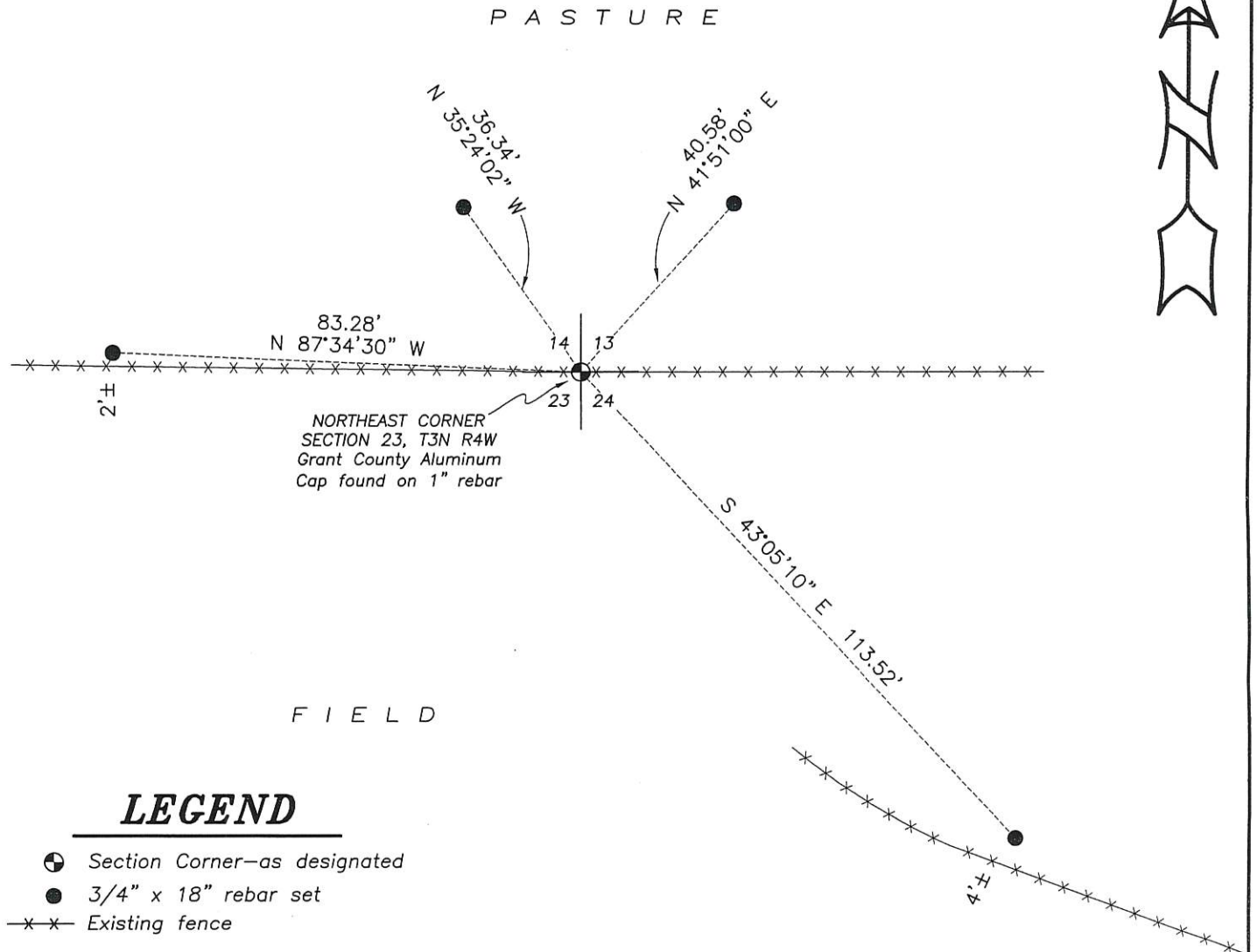
Lucius Lyon set the original corner in 1833.
Larry Austin reset the corner on a Survey filed in Book 25, Page 33 dated 7-1-2009.

DESCRIPTION OF CORNER EVIDENCE FOUND: (b) (f) (g) (h)

I found the 1" Rebar with Grant County Aluminum Cap as set by Larry Austin. I set four new witness corners after I verified the monument's location with G.P.S. and E.D.M. methods

DESCRIPTION OF CORNER AND WITNESS MONUMENTS, references and accessories used to perpetuate the original or re-established location of this corner. (c) (d) (e)
Witnesses to corner location Shane Austin, Owen Austin.

SKETCH:



LEGEND

- ⊕ Section Corner—as designated
- 3/4" x 18" rebar set
- x-x- Existing fence

