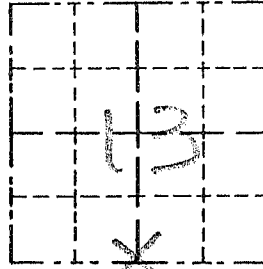


Survey Monument Record

TYPE OF MONUMENT 3/4" X 24" IRON BAR
SET

CORNER NO. 62
 SECTION 13
 TOWN 3N
 RANGE 4W

FIELD BOOK: 97-22
 PAGE (13)



BASIS FOR MONUMENT LOCATION

(Use reverse side if necessary)

Show info such as: History of corner, with reference to Vol. and pg., dates, surveyor; exact description of monument replaced; if location computed, by taped or EDM traverse; landowner, remarks, etc.

LOCATION
 (Indicated by "X")

SEAL:

CORNER SET IN 1833 BY
 ROBERT CLARK, IN 1856
 OVERTON FOUND THE
 ORIGINAL CORNER. CORNER
 ESTABLISHED AT AN EXISTING OCCUP-
 ATION LOCATION; VERIFIED
 THIS LOCATION USING EDM
 METHODS.



CERTIFIED CORRECT

Larry L. Anstetz
 Registered Land Surveyor

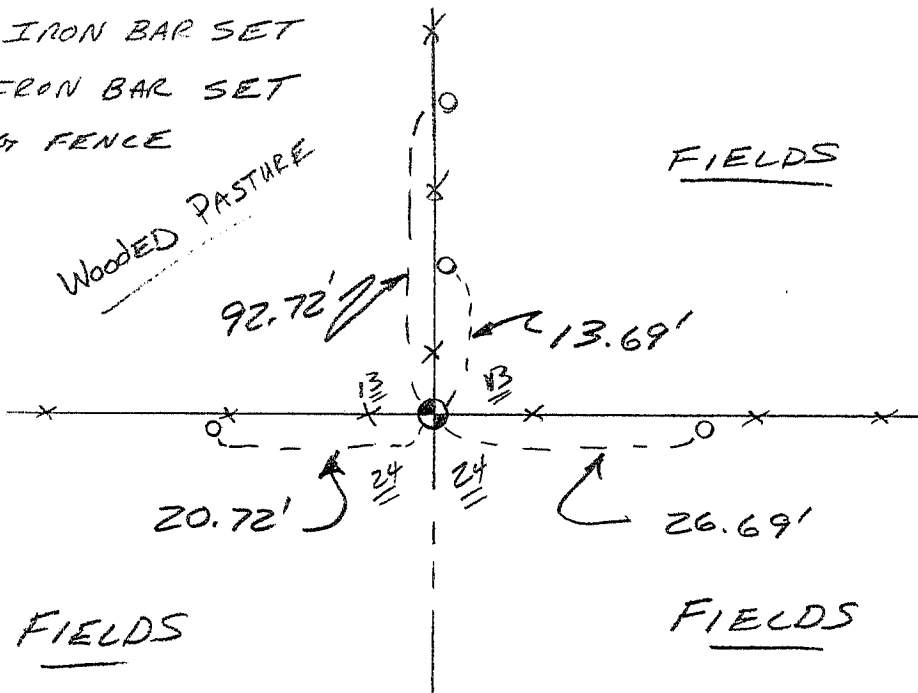
DATE: 1-12-98

TIE SKETCH

Show at least three (3) ties and monument

LEGEND

- ⊕ 3/4" X 24" IRON BAR SET
- 1/2" X 15" IRON BAR SET
- EXISTING FENCE



No SCALE