

# GRANT COUNTY CERTIFIED LAND CORNER

CORNER NUMBER 58

**CERTIFICATE:**

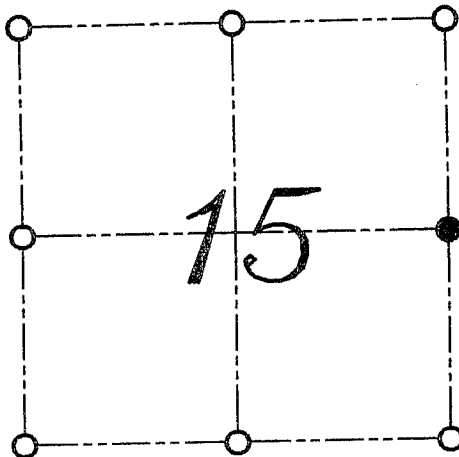
I, LARRY L. AUSTIN, DO HEREBY CERTIFY THAT ON 19th DAY OF NOVEMBER, 1999, I FOUND EVIDENCE OF THE EAST 1/4 CORNER OF SECTION 15, TOWN 3 NORTH, RANGE 4 WEST, OF THE FOURTH PRINCIPAL MERIDIAN, AND I RE-ESTABLISHED SAID CORNER ACCORDING TO THE WISCONSIN STATUTES AS SHOWN AND DESCRIBED HEREON.

DATED THIS 29th DAY OF NOVEMBER, 1999

*Larry L. Austin*  
LARRY L. AUSTIN S-1903



SEAL



● = CORNER LOCATION  
EAST 1/4 CORNER OF  
SECTION 15, T 3 N R 4 W  
TOWN OF WATERLOO

**HISTORY OF ORIGINAL CORNER ESTABLISHMENT:**

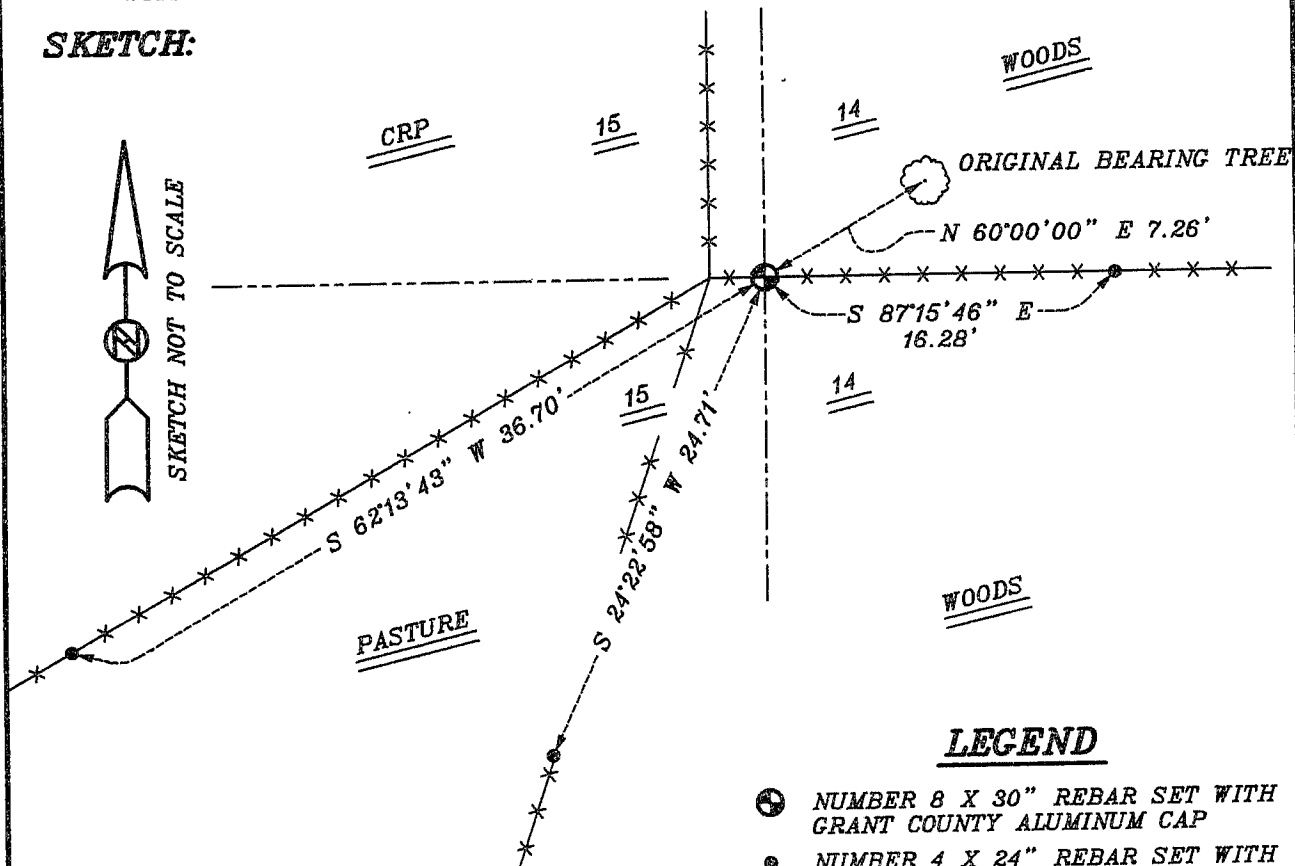
CORNER WAS SET IN 1833 BY LUCIUS LYON.  
IN 1847 GEO STUNTZ TIED TO THE CORNER WITH NO MENTION OF MONUMENT.  
IN 1877 JOEL BARBER TIED TO THE CORNER WITH NO MENTION OF MONUMENT.

**DESCRIPTION OF CORNER EVIDENCE FOUND:**

I FOUND AN ORIGINAL BEARING TREE AND SET THE CORNER BASED ON THIS.  
VERIFIED THIS LOCATION USING E.D.M. AND G.P.S. METHODS.

**DESCRIPTION OF CORNER AND WITNESS MONUMENTS, REFERENCES AND ACCESSORIES  
USED TO PERPETUATE THE ORIGINAL OR RE-ESTABLISHED LOCATION OF THIS CORNER:**  
WITNESS TO THE CORNER LOCATION: BOBBY SEDGWICK ; SHELBY BLINDERT

**SKETCH:**



**LEGEND**

- NUMBER 8 X 30" REBAR SET WITH GRANT COUNTY ALUMINUM CAP
- NUMBER 4 X 24" REBAR SET WITH RED PLASTIC CAP
- \* \* \* EXISTING FENCE LOCATION