

GRANT COUNTY CERTIFIED LAND CORNER

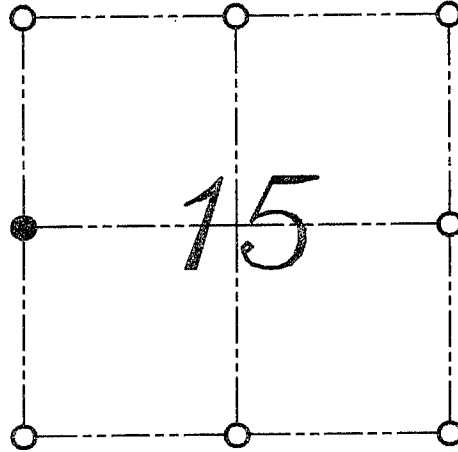
CORNER NUMBER 57

CERTIFICATE:

I, LARRY L. AUSTIN, DO HEREBY CERTIFY THAT ON 19th DAY OF NOVEMBER, 1999, I FOUND NO EVIDENCE OF THE WEST 1/4 CORNER OF SECTION 15, TOWN 3 NORTH, RANGE 4 WEST, OF THE FOURTH PRINCIPAL MERIDIAN, AND I RE-ESTABLISHED SAID CORNER ACCORDING TO THE WISCONSIN STATUTES AS SHOWN AND DESCRIBED HEREON.

DATED THIS 29th DAY OF NOVEMBER, 1999

Larry L. Austin
LARRY L. AUSTIN S-1903



● = CORNER LOCATION
WEST 1/4 CORNER OF
SECTION 15, T 3 N R 4 W
TOWN OF WATERLOO



SEAL

HISTORY OF ORIGINAL CORNER ESTABLISHMENT:

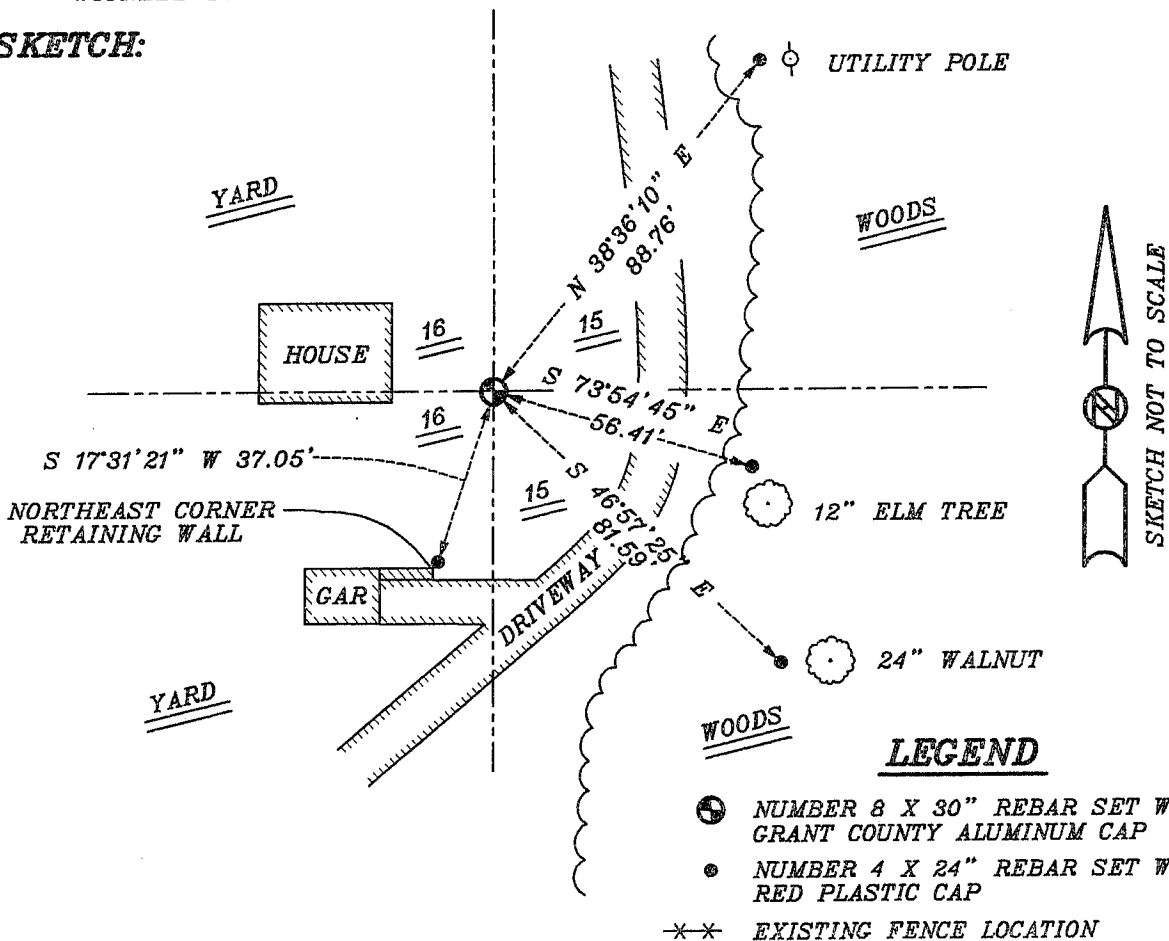
CORNER WAS SET IN 1833 BY LUCIUS LYON.
IN 1877 JOEL BARBER TIED TO THE CORNER WITH NO MENTION OF A MONUMENT.
IN 1878 JOEL BARBER TIED TO THE CORNER AGAIN.

DESCRIPTION OF CORNER EVIDENCE FOUND:

I FOUND NO EVIDENCE TO THE LOCATION OF THE CORNER. I SET THE CORNER BASED ON A PROJECTION OF OCCUPIED LINES AND PROPORTIONING METHODS. VERIFIED THIS LOCATION USING E.D.M. AND G.P.S. METHODS.

DESCRIPTION OF CORNER AND WITNESS MONUMENTS, REFERENCES AND ACCESSORIES USED TO PERPETUATE THE ORIGINAL OR RE-ESTABLISHED LOCATION OF THIS CORNER:
WITNESS TO THE CORNER LOCATION: BOBBY SEDGWICK ; SHELBY BLINDERT

SKETCH:



LEGEND

- NUMBER 8 X 30" REBAR SET WITH GRANT COUNTY ALUMINUM CAP
- NUMBER 4 X 24" REBAR SET WITH RED PLASTIC CAP
- * * * EXISTING FENCE LOCATION