

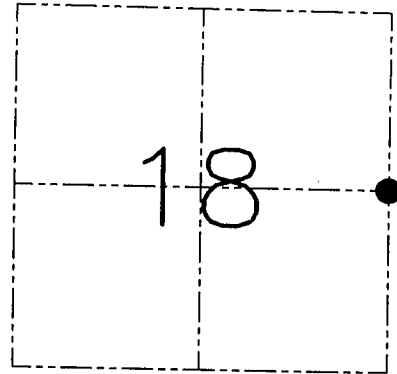
**U.S. PUBLIC LAND SURVEY MONUMENT RECORD - GRANT COUNTY, WI**  
 Section 18, Town 3 North Range 4 West, Town of Waterloo

**CERTIFICATE**

I, Larry L. Austin, do hereby certify that the corner location on this record was determined by me and/or under my direct supervision and that this U.S. public land survey monument record is correct and complete to the best of my knowledge and belief.

Dated this 21st day of December, 2007

*Larry L. Austin*  
 Larry L. Austin S-1903



● = CORNER LOCATION

**HISTORY OF CORNER ESTABLISHMENT**

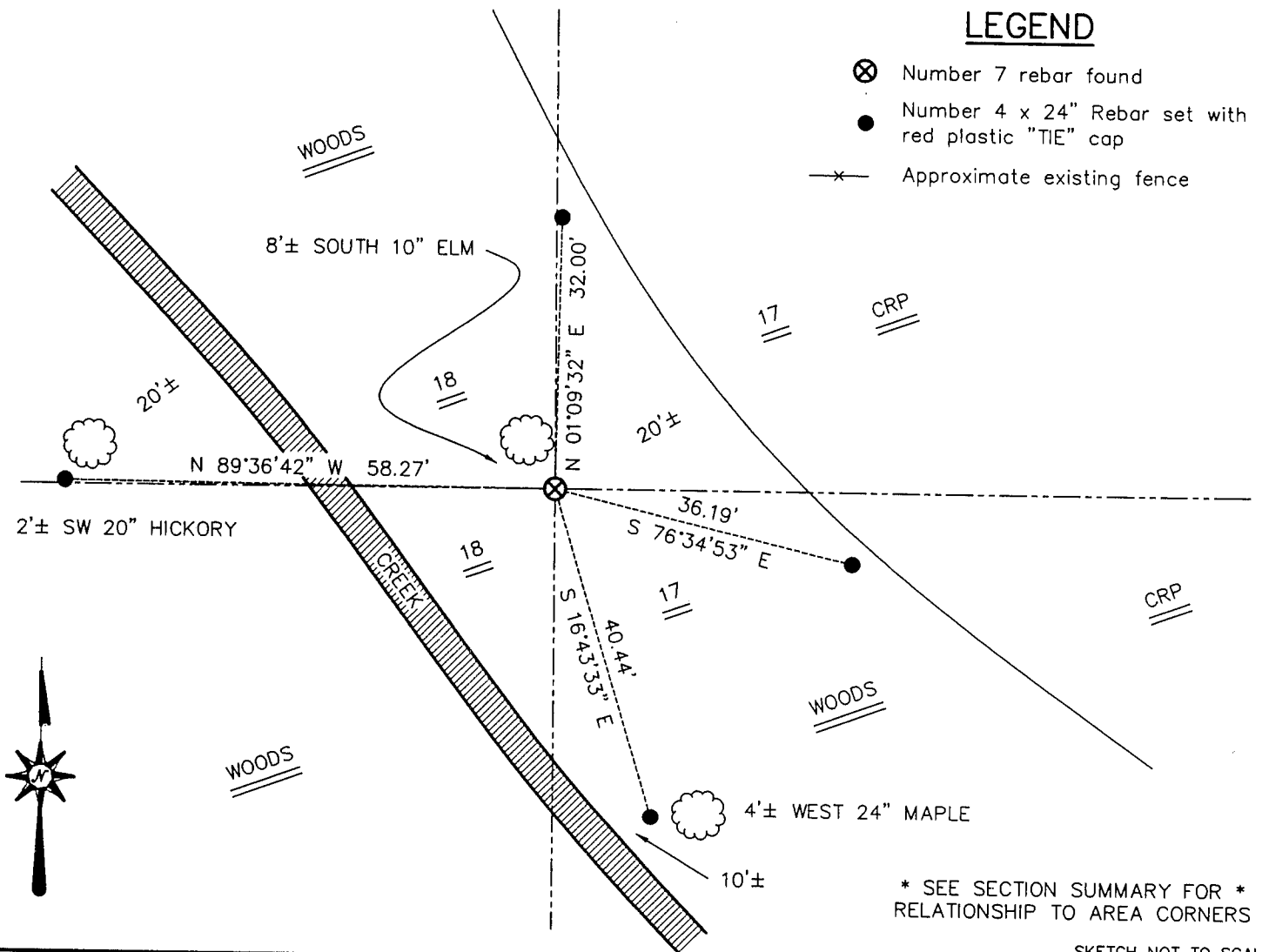
Corner was originally set in 1833 by Lucius Lyon.  
 In 1859 Wilson found the original corner.

**DESCRIPTION OF CORNER EVIDENCE FOUND**

I found a #7 iron bar and accepted it's location after an EDM & GPS traverse of the area.

**DESCRIPTION OF CORNER AND WITNESS MONUMENTS, references and accessories used to perpetuate the original or re-established location of this corner. Witnesses to the corner location Bobby Sedgwick & Shane Austin & Shelby Blindert & Brad Digman**

**SKETCH:**



**LEGEND**

- ⊗ Number 7 rebar found
- Number 4 x 24" Rebar set with red plastic "TIE" cap
- x- Approximate existing fence

\* SEE SECTION SUMMARY FOR \*  
 RELATIONSHIP TO AREA CORNERS

SKETCH NOT TO SCALE

**AUSTIN ENGINEERING, LLC**

4211 HWY 81 EAST, LANCASTER, WI 53813  
 PHONE 608-723-6363 FAX 608-723-6702

FIELDBOOK: SDR33, 2031  
 G: \T3NR4W\18GCC  
 C: \SWA\TIE\T3NR4W\55  
 CREW: BS-SB-SA-BD

DRAWN BY: SW AUSTIN  
 APPROVED: LL AUSTIN

**CORNER NUMBER 55**