

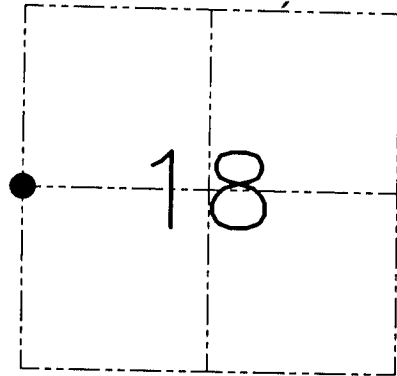
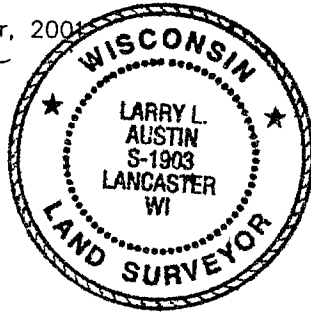
**U.S. PUBLIC LAND SURVEY MONUMENT RECORD - GRANT COUNTY, WI**  
 Section 18, Town 3 North Range 4 West, Town of Waterloo

**CERTIFICATE**

I, Larry L. Austin, do hereby certify that the corner location on this record was determined by me and/or under my direct supervision and that this U.S. public land survey monument record is correct and complete to the best of my knowledge and belief.

Dated this 21st day of December, 2001

*Larry L. Austin*  
 Larry L. Austin S-1903



● = CORNER LOCATION

**HISTORY OF CORNER ESTABLISHMENT**

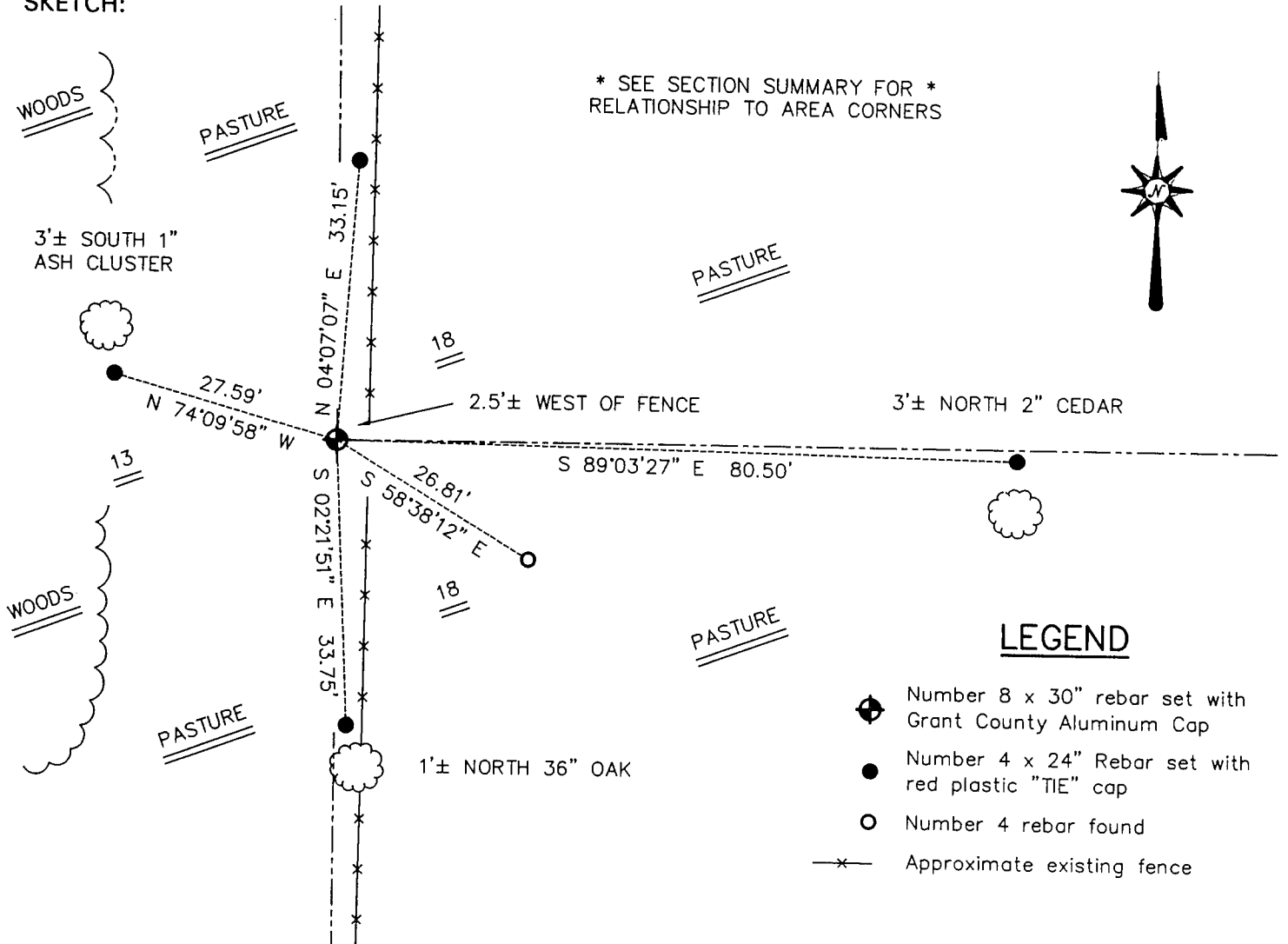
Corner was never originally set.  
 In 1859 Wilson set a post at this location.

**DESCRIPTION OF CORNER EVIDENCE FOUND**

I reset the corner at the proportioned offset from the East 1/4 of Section 13.  
 Verified this location using EDM & GPS methods.

**DESCRIPTION OF CORNER AND WITNESS MONUMENTS, references and accessories used to perpetuate the original or re-established location of this corner. Witnesses to the corner location Bobby Sedgwick & Shane Austin & Shelby Blindert & Brad Digman**

**SKETCH:**



**LEGEND**

- Number 8 x 30" rebar set with Grant County Aluminum Cap
- Number 4 x 24" Rebar set with red plastic "TIE" cap
- Number 4 rebar found
- x— Approximate existing fence

SKETCH NOT TO SCALE

**AUSTIN ENGINEERING, LLC**

4211 HWY 81 EAST, LANCASTER, WI 53813  
 PHONE 608-723-6363 FAX 608-723-6702

FIELDBOOK: SDR33, 2031  
 G: \T3NR4W\18GCC  
 C: \SWA\TIE\T3NR4W\54  
 CREW: BS-SB-SA-BD

DRAWN BY: SW AUSTIN  
 APPROVED: LL AUSTIN

**CORNER NUMBER 54**