

# GRANT COUNTY CERTIFIED LAND CORNER

CORNER NO. 50

**CERTIFICATE:**

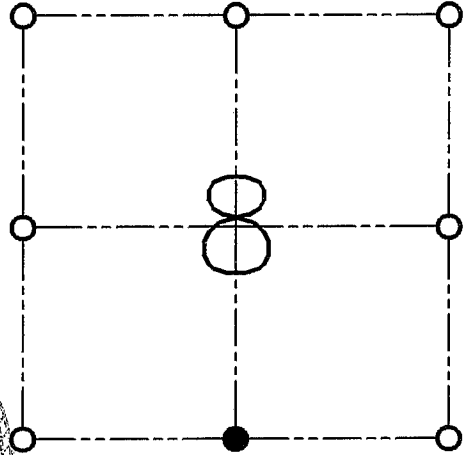
I, LARRY L. AUSTIN, DO HEREBY CERTIFY THAT ON TENTH DAY OF MAY, 1998, I FOUND NO EVIDENCE OF THE SOUTH 1/4 CORNER OF SECTION 8, TOWN 3 NORTH, RANGE 4 WEST, OF THE FOURTH PRINCIPAL MERIDIAN, AND I RE-ESTABLISHED SAID CORNER ACCORDING TO THE WISCONSIN STATUTES AS SHOWN AND DESCRIBED HEREON.

DATED, THIS FIFTH DAY OF JANUARY, 1999

*Larry L. Austin*  
LARRY L. AUSTIN S-1903



SEAL



● = CORNER LOCATION

**SOUTH 1/4 OF SECTION 8  
T 3 N R 4 W  
TOWN OF WATERLOO**

**HISTORY OF ORIGINAL CORNER ESTABLISHMENT:**

CORNER WAS SET IN 1833 BY LUCIUS LYON.

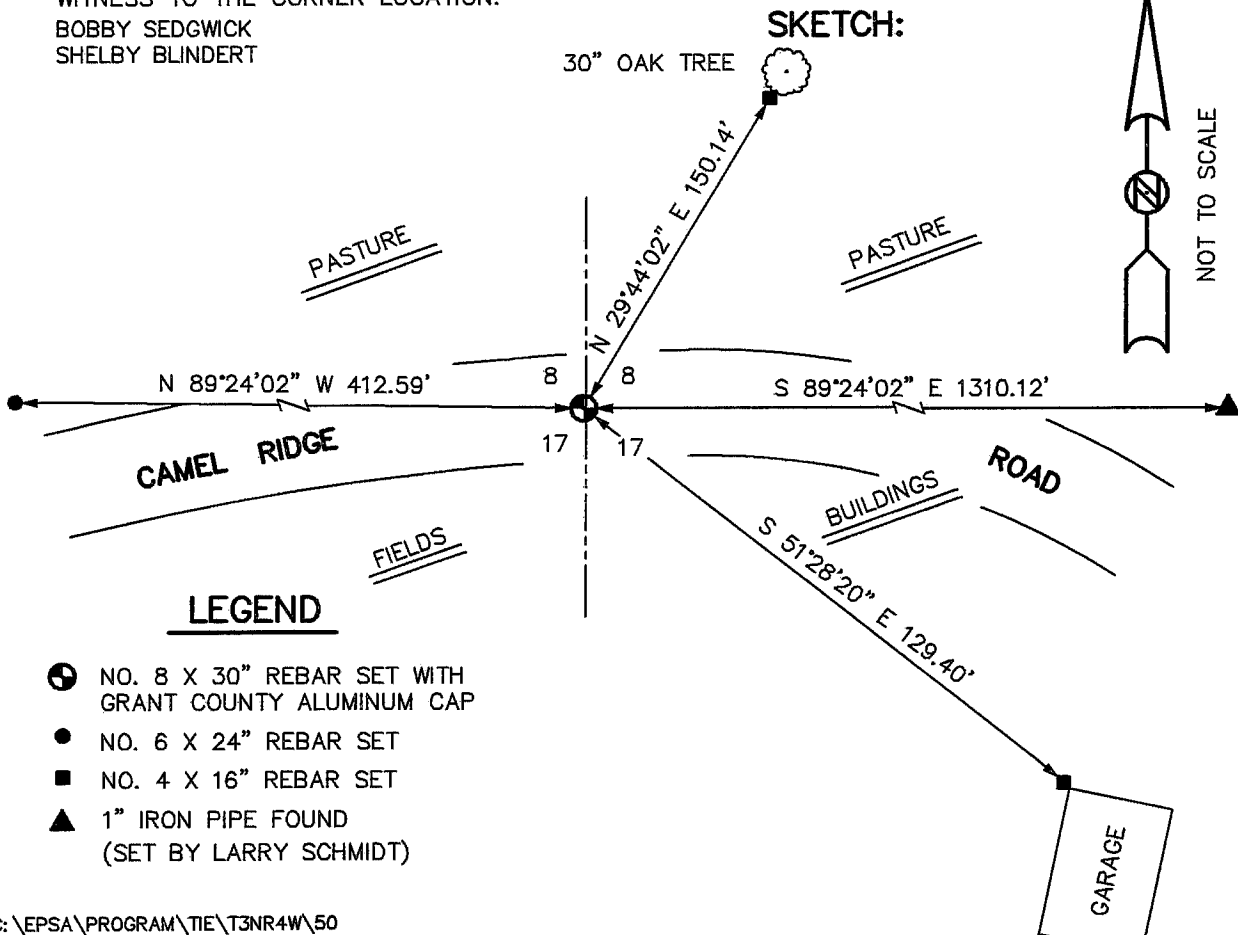
**DESCRIPTION OF CORNER EVIDENCE FOUND:**

CORNER WAS SET ONLINE WITH THE SOUTHEAST CORNER AND THE MONUMENTED OCCUPIED 40 (SCHMIDT). DOUBLED THE DISTANCE FOR THE EASTING. VERIFIED THIS LOCATION USING E.D.M. & G.P.S. METHODS.

**DESCRIPTION OF CORNER AND WITNESS MONUMENTS, REFERENCES AND ACCESSORIES USED TO PERPETUATE THE ORIGINAL OR RE-ESTABLISHED LOCATION OF THIS CORNER:**

**WITNESS TO THE CORNER LOCATION:**

BOBBY SEDGWICK  
SHELBY BLINDERT



**LEGEND**

- NO. 8 X 30" REBAR SET WITH GRANT COUNTY ALUMINUM CAP
- NO. 6 X 24" REBAR SET
- NO. 4 X 16" REBAR SET
- ▲ 1" IRON PIPE FOUND (SET BY LARRY SCHMIDT)