

CERTIFIED LAND CORNER

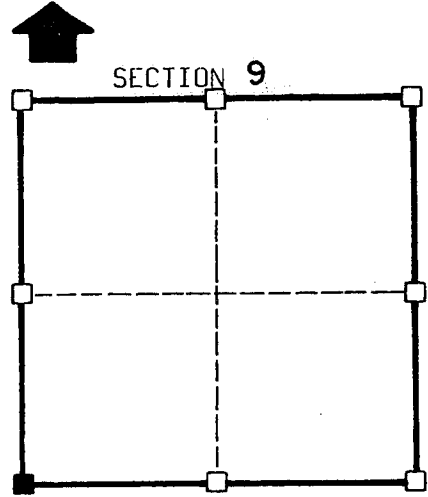
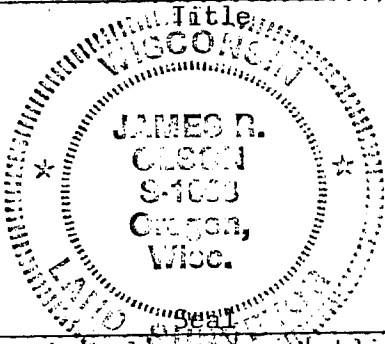
STATE OF WISCONSIN)
 COUNTY OF GRANT) S.S.

CERTIFICATE

I, James R. Olson, do hereby certify that on the 8 day of Dec. 1983, I found (evidence) (~~no evidence~~) of the SW corner of Section 9, T 3 N, R 4 W, Fourth Principal Meridian, and I re-established said corner according to the Wisconsin Statutes as shown and described hereon.

Dated this 21 day of Dec. 1983

James R. Olson
 Registered Land Surveyor S-1698



■ = corner location
 T 3 N R 4 W
 Town of: WATERLOO

History of original corner establishment:

Corner was used in a survey by Charles Sampson in 1898, he set a stone and made note of 2 bearing trees.

Description of corner evidence found:

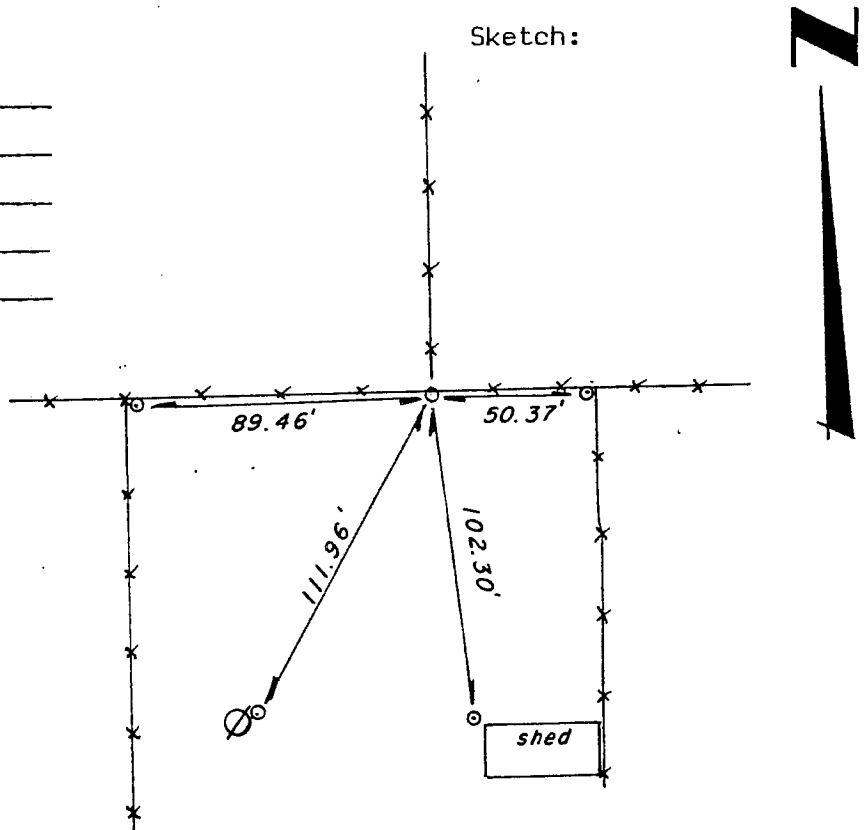
No evidence of the corner was found with regard to the survey by Sampson. The corner was occupied by the way of a fence corner which was accepted.

Description of corner and witness monuments, references and accessories used to perpetuate the original or re-established location of this corner:

Witnesses to corner location:

James R. Olson
Kevin Roder

Sketch:



Legend
 --- Fenceline
 ⊙ Power Pole
 ○ 1" ∅ Iron pipe

SURVEY CONTROL ORDER

horizontal

vertical

WISCONSIN COORDINATE SYSTEM				
Corner	East(X)	North(Y)	Elevation(Z)	Zone
Control Sta. Name				