

GRANT COUNTY CERTIFIED LAND CORNER

CORNER NO. _____

CERTIFICATE:

I, LARRY L. AUSTIN, DO HEREBY CERTIFY THAT ON ON THE 20TH DAY OF FEBRUARY, 1998, I FOUND OCCUPATIONAL EVIDENCE OF THE NORTHEAST CORNER OF SECTION 15, TOWN 3 NORTH, RANGE 4 WEST, OF THE FOURTH PRINCIPAL MERIDIAN, AND I RE-ESTABLISHED SAID CORNER ACCORDING TO THE WISCONSIN STATUTES AS SHOWN AND DESCRIBED HEREON.

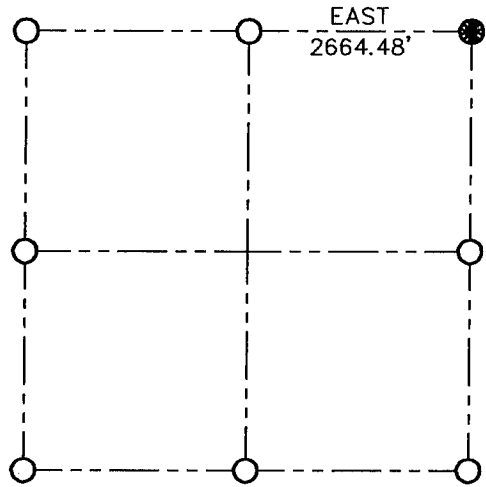
DATED THIS 6TH DAY OF MARCH, 1998

Larry L. Austin
LARRY L. AUSTIN S-1903



SEAL

SECTION 15



● = CORNER LOCATION

T 3 N, R 4 W
TOWN OF WATERLOO

HISTORY OF ORIGINAL CORNER ESTABLISHMENT:
CORNER ORIGINALLY SET IN 1833 BY LUCIUS LYON.

DESCRIPTION OF CORNER EVIDENCE FOUND:
EXISTING FENCE CORNER AND VERIFIED BY E.D.M. TRAVERSE OF THE AREA.

DESCRIPTION OF CORNER AND WITNESS MONUMENTS, REFERENCES AND ACCESSORIES USED TO PERPETUATE THE ORIGINAL OR RE-ESTABLISHED LOCATION OF THIS CORNER:

SKETCH:

WITNESS TO THE CORNER LOCATION:
BOBBY SEDGWICK
DAN KETCHUM



LEGEND

- ⊕ NO. 10 X 30" REBAR SET AT CORNER
- NO. 2 X 15" REBAR SET AS TIES
- x-x- EXISTING FENCE

