

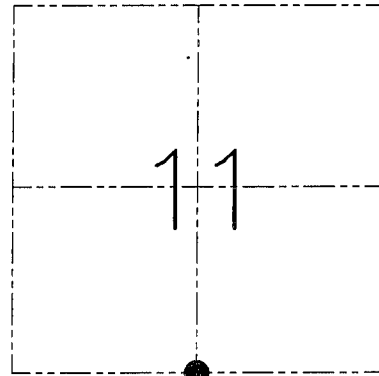
U.S. PUBLIC LAND SURVEY MONUMENT RECORD - GRANT COUNTY, WI
 Section 11, Town 3 North Range 4 West, Town of Waterloo

CERTIFICATE

I, Larry L. Austin, do hereby certify that the corner location on this record was determined by me and/or under my direct supervision and that this U.S. public land survey monument record is correct and complete to the best of my knowledge and belief.

Dated this 26th day of February, 2002

Larry L. Austin
 Larry L. Austin S-1903



● = CORNER LOCATION

HISTORY OF CORNER ESTABLISHMENT

Corner was originally set in 1833 by Lucius Lyon.
 No other record of the corner was found.

DESCRIPTION OF CORNER EVIDENCE FOUND

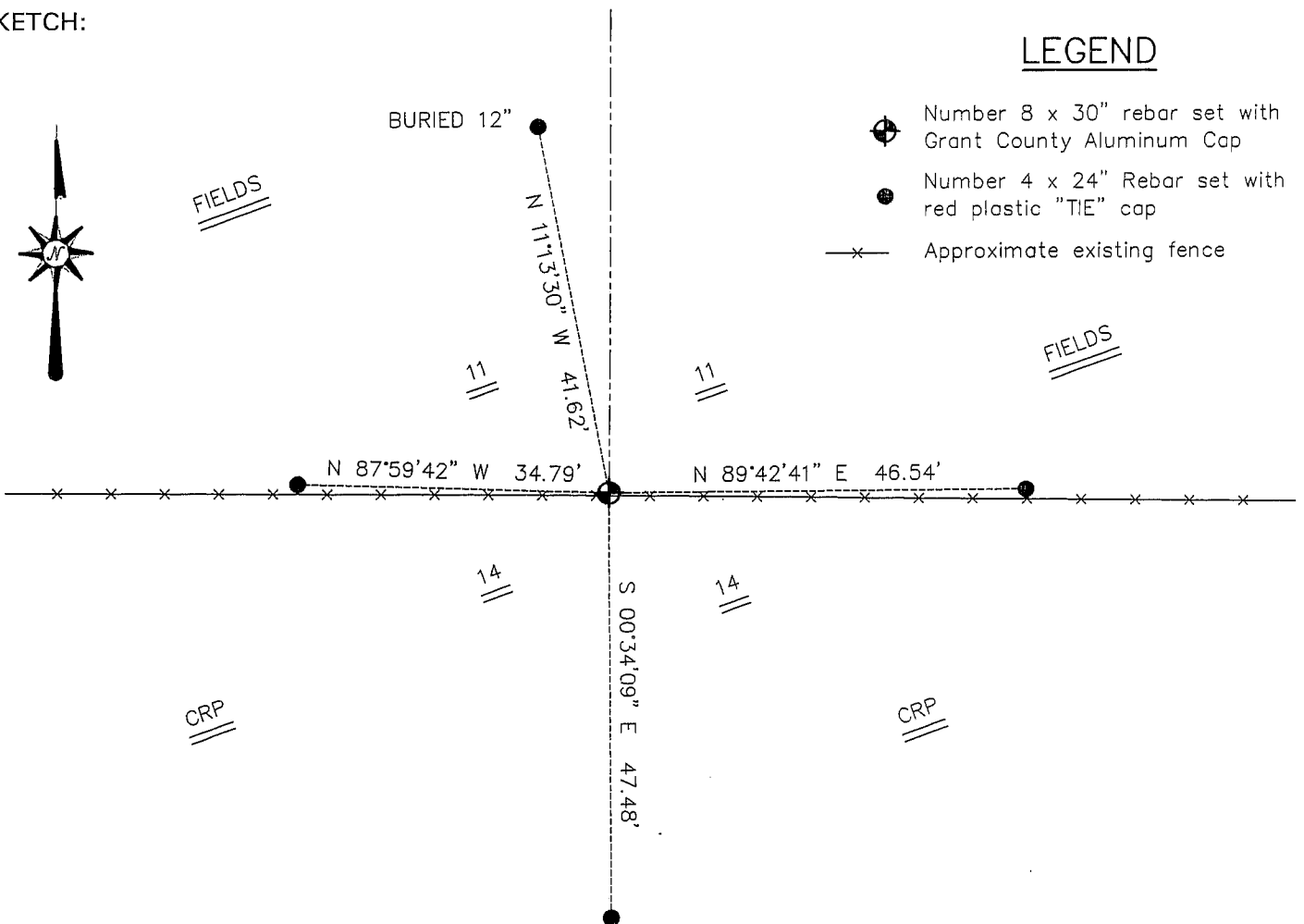
I reset the corner proportionately between the Southwest and Southeast corners for Easting. Northing was established by an East-West fence. Verified this location using EDM & GPS methods.

DESCRIPTION OF CORNER AND WITNESS MONUMENTS, references and accessories used to perpetuate the original or re-established location of this corner. Witnesses to the corner location Bobby Sedgwick & Shane Austin & Shelby Blindert

SKETCH:

LEGEND

- ⊕ Number 8 x 30" rebar set with Grant County Aluminum Cap
- Number 4 x 24" Rebar set with red plastic "TIE" cap
- x— Approximate existing fence



* SEE SECTION SUMMARY FOR *
 RELATIONSHIP TO AREA CORNERS

SKETCH NOT TO SCALE

AUSTIN ENGINEERING, LLC
 4211 HWY 81 EAST, LANCASTER, WI 53813
 PHONE 608-723-6363 FAX 608-723-6702

FIELDBOOK: SDR33, 2131
 G: \T3NR4W\15A
 C: \SWA\TIE\T3NR4W\44
 CREW: BS-SB-SA-BD

DRAWN BY: SW AUSTIN
 APPROVED: LL AUSTIN

CORNER NUMBER 44