

CERTIFIED LAND CORNER

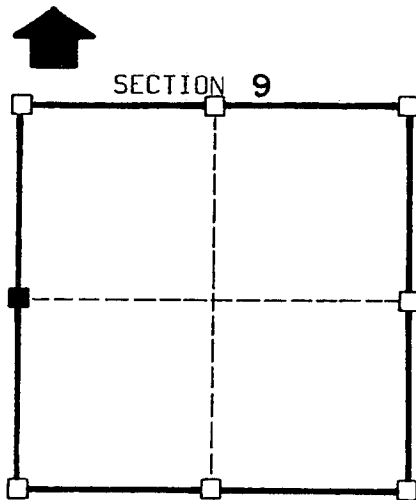
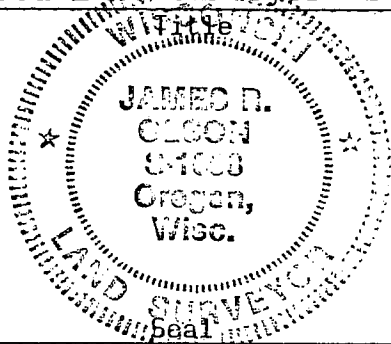
STATE OF WISCONSIN)
 COUNTY OF GRANT) S.S.

CERTIFICATE

I, James R. Olson, do hereby certify that on the 8 day of Dec. 1983, I found (~~evidence~~) (no evidence) of the West 1/4 corner of Section 9, T 3 N, R 4 W, Fourth Principal Meridian, and I re-established said corner according to the Wisconsin Statutes as shown and described hereon.

Dated this 21 day of Dec. 1983

James R. Olson
 Registered Land Surveyor S-1698



■ = corner location
 T 3 N R 4 W
 Town of: WATERLOO

History of original corner establishment:

Stone was found by Joel Barber, county surveyor, in 1876 along with 1 bearing tree.

Corner was again used by Joel Barber in survey dated 12-11-1878

This corner was reestablished by single proportionate measurement.

Description of corner evidence found:

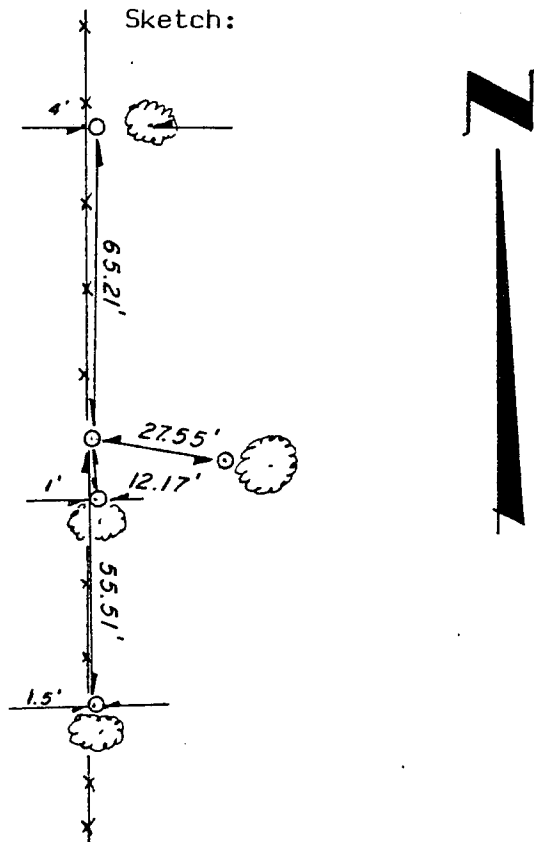
Found no evidence of corner or bearing trees.

Description of corner and witness monuments, references and accessories used to perpetuate the original or re-established location of this corner:

Witnesses to corner location:

James R. Olson
Kevin Roder

Sketch:



Legend

- x-x- Fence line
- o 1" Ø Iron pipe

SURVEY CONTROL ORDER

Horizontal

Vertical

WISCONSIN COORDINATE SYSTEM

Corner	East(X)	North(Y)	Elevation(Z)	Zone
Control Sta. Name				