

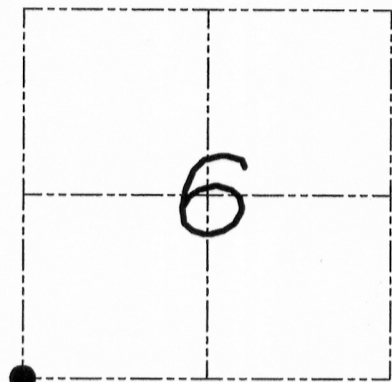
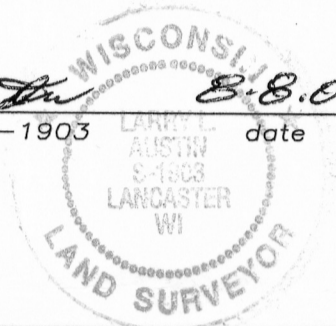
# U.S. PUBLIC LAND SURVEY MONUMENT RECORD

Section 6, Town 3 North Range 4 West, Waterloo Township, Grant County, Wisconsin

## CERTIFICATE

I, Larry L. Austin, do hereby certify that the corner location on this record was determined by me and/or under my direct supervision and that this U.S. public land survey monument record is correct and complete to the best of my knowledge and belief.

*Larry L. Austin* 8.8.08  
 Larry L. Austin, S-1903 date



● = CORNER LOCATION

## HISTORY OF CORNER

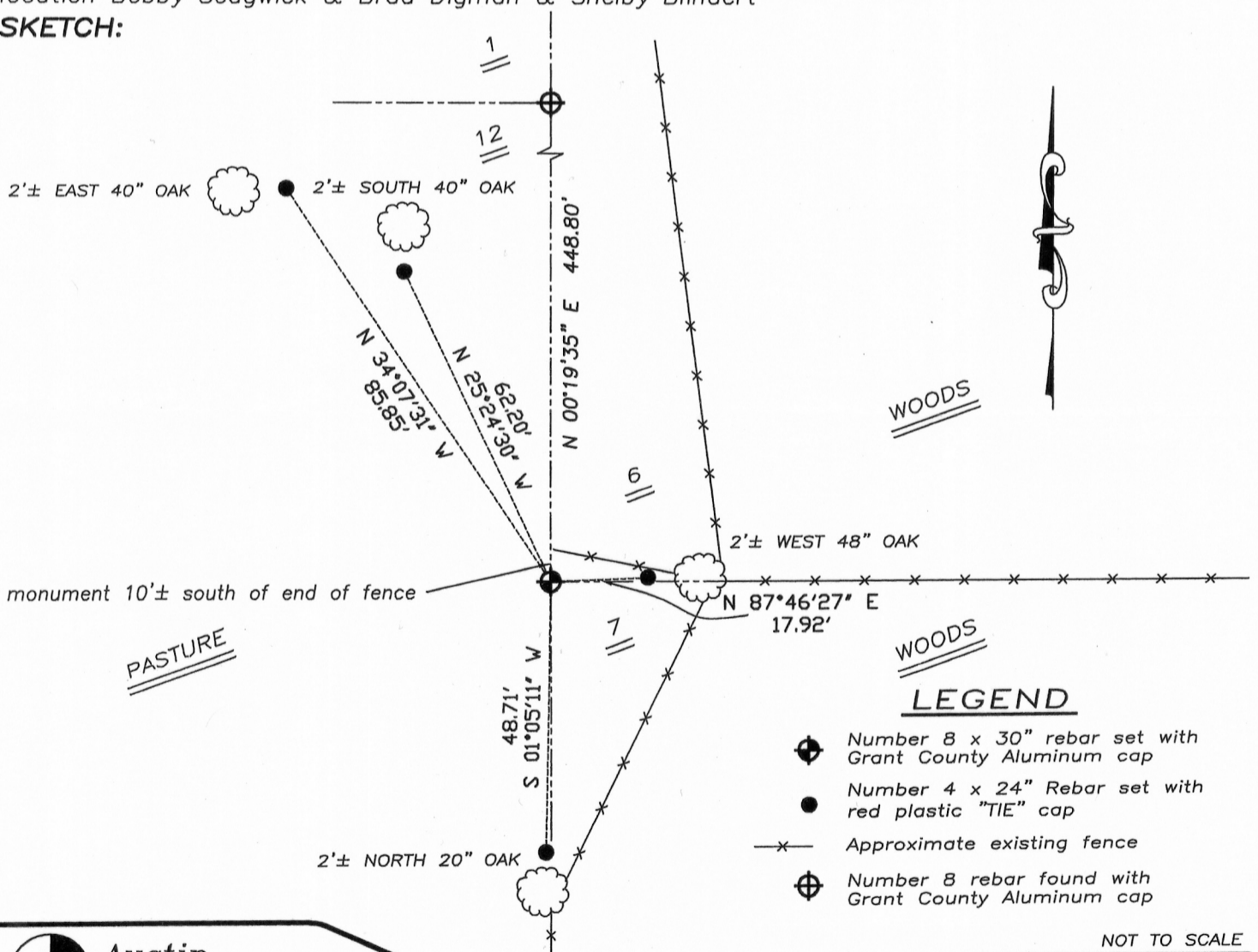
Corner was originally set in 1833 by Lyon. In 1859 Hayden found the original corner. No recent record of the corner was found.

## CORNER EVIDENCE FOUND

I reset the corner at the projection of existing fences. Verified this location using EDM & GPS methods.

**DESCRIPTION OF CORNER AND WITNESS MONUMENTS**, references and accessories used to perpetuate the original or re-established location of this corner. Witnesses to monument location Bobby Sedgwick & Brad Digman & Shelby Blindert

## SKETCH:



## LEGEND

- ⊕ Number 8 x 30" rebar set with Grant County Aluminum cap
- Number 4 x 24" Rebar set with red plastic "TIE" cap
- x- Approximate existing fence
- ⊕ Number 8 rebar found with Grant County Aluminum cap

NOT TO SCALE



**Austin Engineering LLC**

4211 HWY 81 E, LANCASTER, WI 53813  
 PHONE 608-723-6363 FAX 608-723-6702

JOB NUMBER 08S108  
 FIELDBOOK: TDSR, 2710  
 G:\T3NR4W\06BS  
 H:\TIE\T3NR4W\33

DRAWN BY: BL STANFLEY  
 APPROVED: LL AUSTIN

33

MAR 22 2011