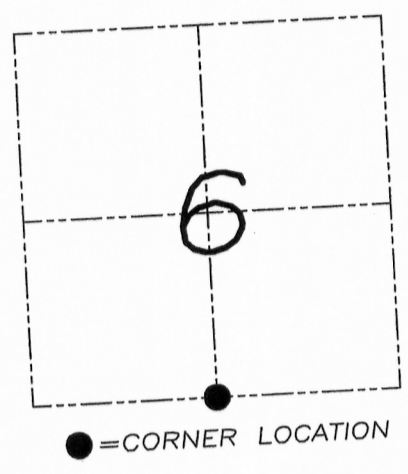


U.S. PUBLIC LAND SURVEY MONUMENT RECORD

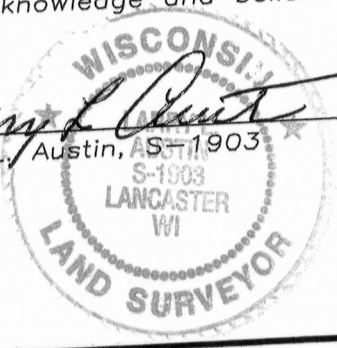
Section 6, Town 3 North Range 4 West, Waterloo Township, Grant County, Wisconsin

CERTIFICATE

I, Larry L. Austin, do hereby certify that the corner location on this record was determined by me and/or under my direct supervision and that this U.S. public land survey monument record is correct and complete to the best of my knowledge and belief.



Larry L. Austin 8.08.08
 Larry L. Austin, AS-1903 date



HISTORY OF CORNER

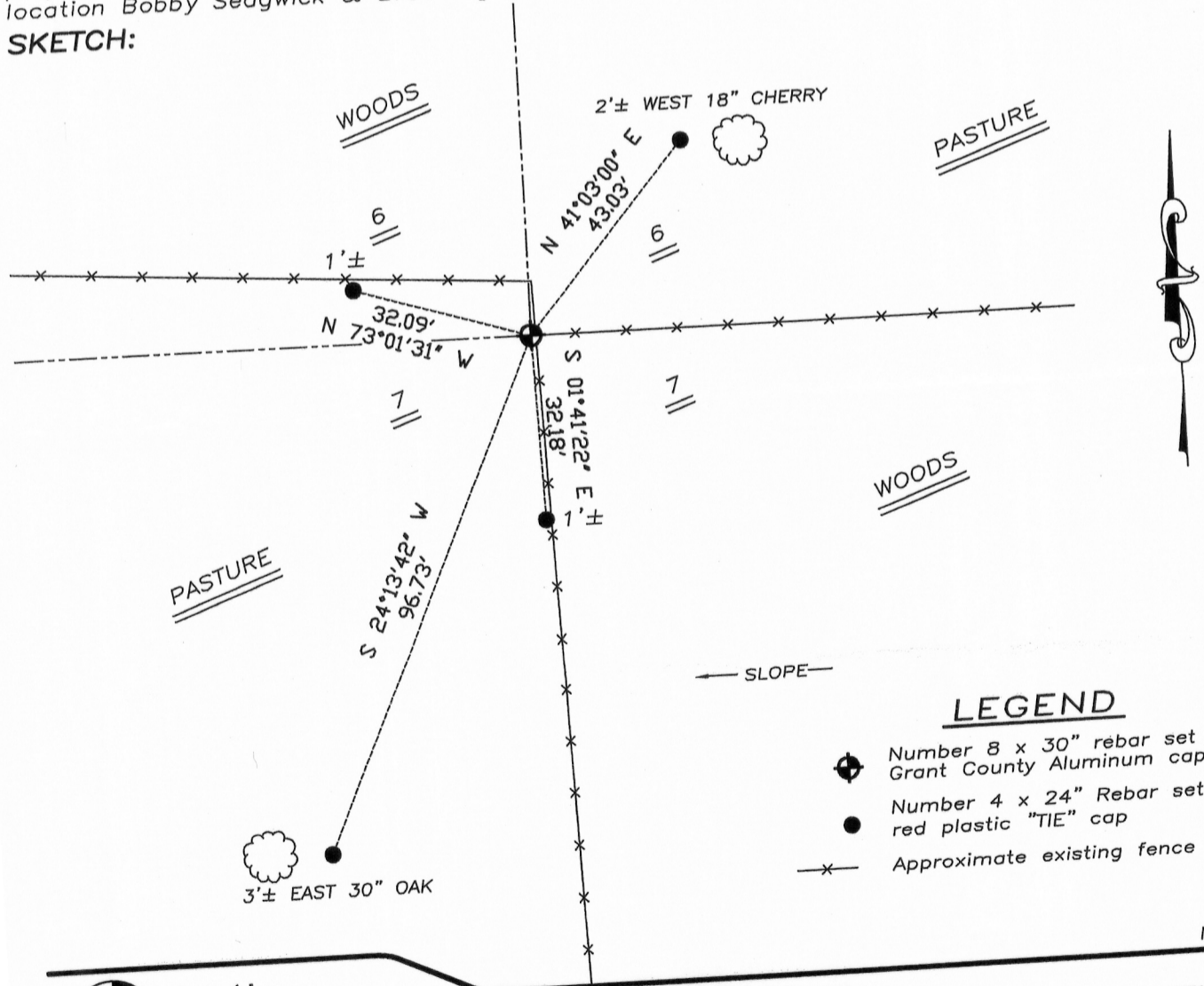
Corner was originally set in 1833 by Lyon. In 1851 Everett found the original corner. In 1858 Hayden found the original corner. In 1868 Barber found the original corner. In 1891 Sampson found an ancient stone monument. No recent record of the corner was found.

CORNER EVIDENCE FOUND

I was unable to locate the stone monument. I used an existing fence corner as the best available evidence. Verified this location using EDM & GPS methods.

DESCRIPTION OF CORNER AND WITNESS MONUMENTS, references and accessories used to perpetuate the original or re-established location of this corner. Witnesses to monument location Bobby Sedgwick & Brad Digman & Shelby Blindert

SKETCH:



LEGEND

- Number 8 x 30" rebar set with Grant County Aluminum cap
- Number 4 x 24" Rebar set with red plastic "TIE" cap
- Approximate existing fence

Austin Engineering LLC
 4211 HWY 81 E, LANCASTER, WI 53813
 PHONE 608-723-6363 FAX 608-723-6702

JOB NUMBER 08S108
 FIELDBOOK: TDSR, 2710
 G:\T3NR4W\06
 H:\TIE\T3NR4W\32

DRAWN BY: BL STANFLEY
 APPROVED: LL AUSTIN

MAR 22 2011