

GRANT COUNTY CERTIFIED LAND CORNER

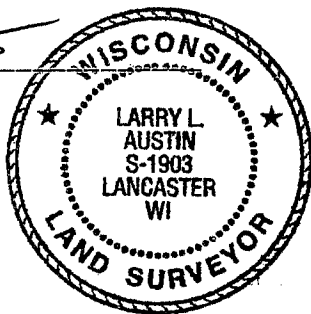
CORNER NUMBER 25

CERTIFICATE:

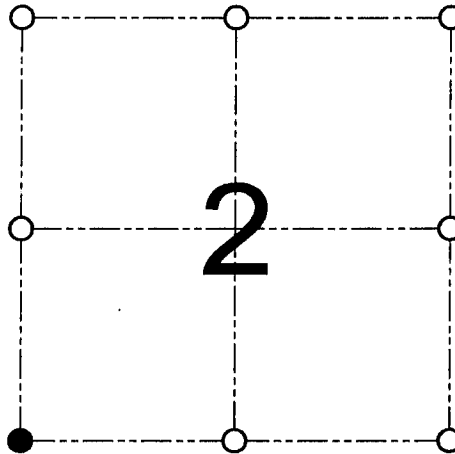
I, Larry L. Austin, do hereby certify that on the 12th day of October, 2000, I found evidence of the Southwest corner of Section 2, Town 3 North, Range 4 West, of the 4th Principal Meridian, and I re-established said corner according to the Wisconsin statutes as shown and described hereon.

Dated this 30th day of November, 2000

Larry L. Austin
Larry L. Austin S-1903



SEAL



● = CORNER LOCATION

SOUTHWEST CORNER OF
SECTION 2, T 3 N R 4 W
TOWN OF WATERLOO

HISTORY OF ORIGINAL CORNER ESTABLISHMENT:

Corner was originally set in 1833 by Lucius Lyon.
In 1856 Overton found the original corner. No other record of the corner was found.

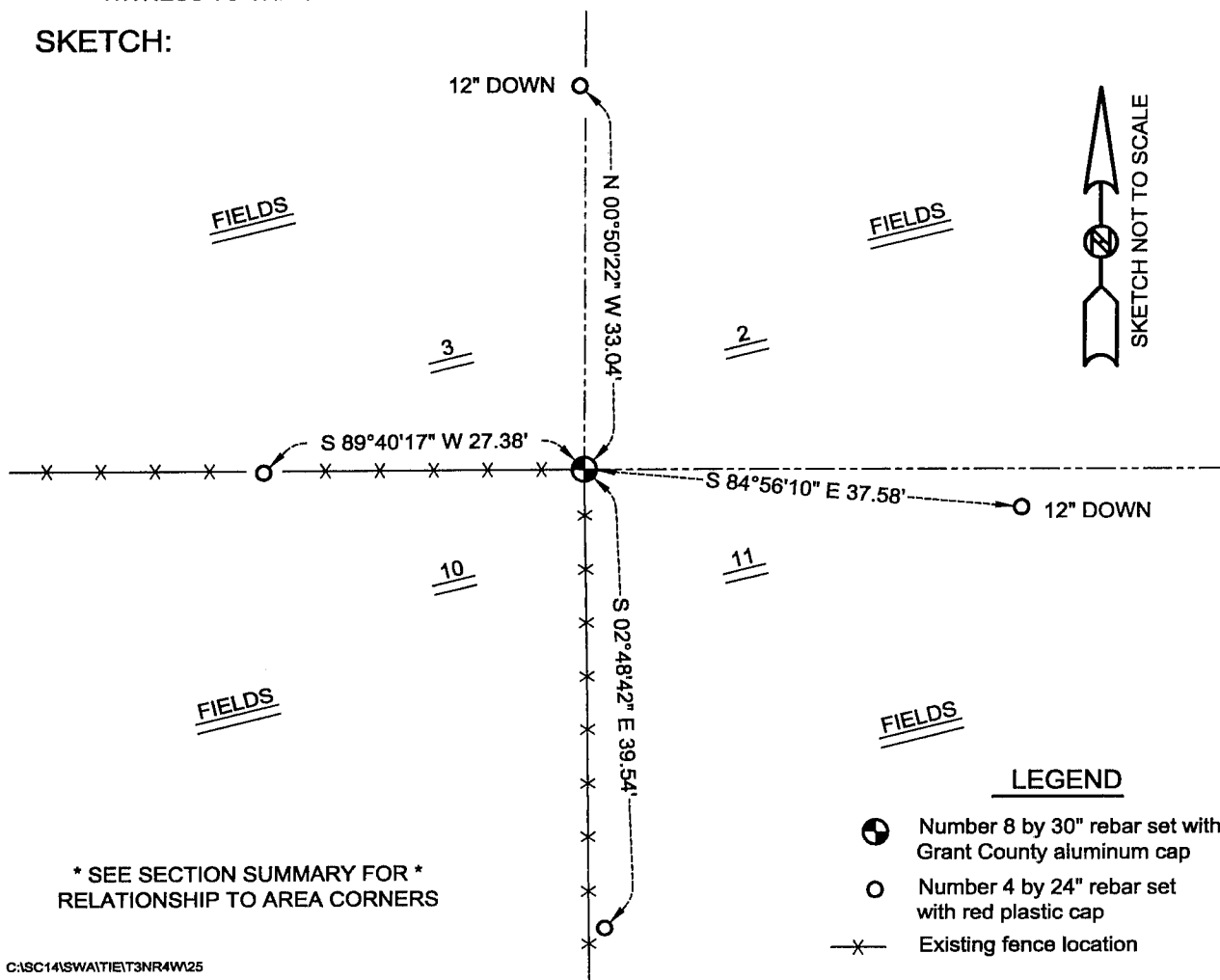
DESCRIPTION OF CORNER EVIDENCE FOUND:

I found a fence corner and accepted it's
location after an EDM & GPS traverse of the area.

DESCRIPTION OF CORNER AND WITNESS MONUMENTS, references and accessories used to perpetuate the original or re-established location of this corner

WITNESS TO THE CORNER LOCATION: TIM FAUVER & SHELBY BLINDERT & BOBBY SEDGWICK

SKETCH:



LEGEND

- Number 8 by 30" rebar set with Grant County aluminum cap
- Number 4 by 24" rebar set with red plastic cap
- x— Existing fence location