

U.S. PUBLIC LAND SURVEY MONUMENT RECORD - GRANT COUNTY, WI

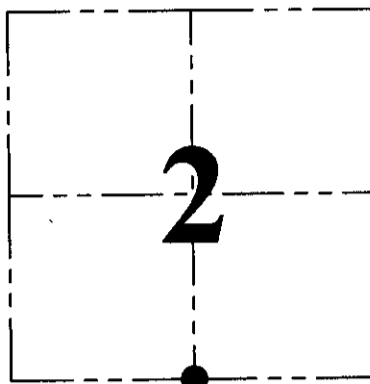
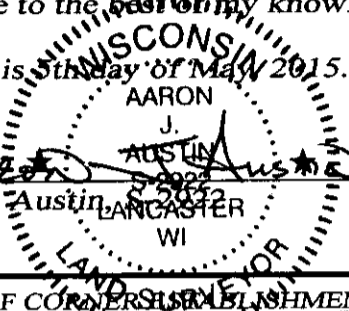
Section 2, Town 3 North Range 4 West, Town of Waterloo

CERTIFICATE:

I, Aaron J. Austin, Wisconsin Professional Land Surveyor, do hereby certify that the corner location on this record was determined by me and/or under my direct supervision and that this U.S. Public Land Survey Monument Record is correct and complete to the best of my knowledge and belief.

Dated this 07th day of May 2015.

[Signature]
 Aaron J. Austin, Wisconsin Professional Land Surveyor
 Lancaster, WI



● = CORNER LOCATION

HISTORY OF CORNER ESTABLISHMENT:

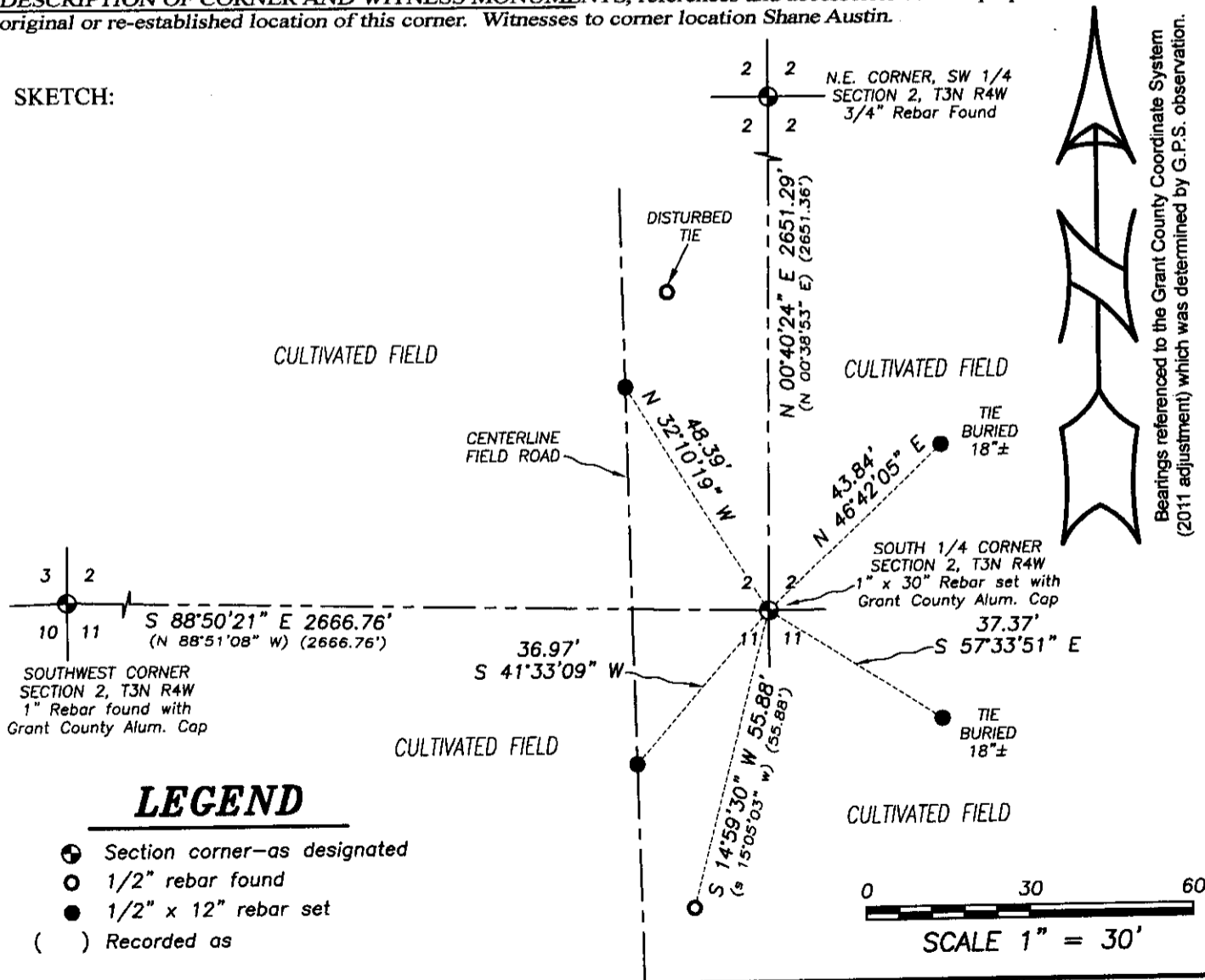
1833-Lucius Lyon set original corner.
 1842-Freeman tied to the corner on a Survey in Book A, Page 126.
 1844-Wiltse tied to the corner on a Survey in Book A, Page 179.
 1856 Overton tied to the corner on a Survey in Book B, Page 505.
 2000-Larry Austin Reset the corner on a Survey in Book 8, Page 10 and filed a Certified Land Corner sheet for the corner. Larry Austin tied to the corner on Surveys in Book 8, Page 11, Book 16, Page 22, Book 10, Page 90, Book 22, Page 38 and Book 22, Page 57. 2014-Aaron Austin tied to the corner on a Survey filed in Book 36, Page 22.

DESCRIPTION OF CORNER EVIDENCE FOUND:

The corner and two witness monuments established by Larry Austin could not be recovered due to recent bulldozing in this area. I found one witness corner in place and one disturbed corner. I reset the corner based upon dimensions to the found tie and the Southwest corner of Section 2 as shown on the Survey in Book 8, Page 11. I set 4 new witness corners as shown hereon and verified this location with G.P.S. and E.D.M. methods.

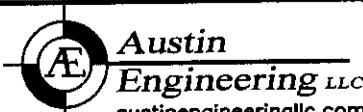
DESCRIPTION OF CORNER AND WITNESS MONUMENTS, references and accessories used to perpetuate the original or re-established location of this corner. Witnesses to corner location Shane Austin.

SKETCH:



LEGEND

- Section corner—as designated
- 1/2" rebar found
- 1/2" x 12" rebar set
- () Recorded as



Austin Engineering LLC
 austinengineeringllc.com
 4211 HWY 81 E, LANCASTER, WI 53813
 PHONE: 608-723-6363 FAX: 608-723-6702

JOB NO: 14s202
 H:\CRD\14s202
 H:\TIE\T3NR4W\24

FIELDBOOK: TDSR
 DRAWN BY: AJ AUSTIN
 CREW: SW AUSTIN

GRANT COUNTY CERTIFIED LAND CORNER

CORNER NUMBER 24

CERTIFICATE:

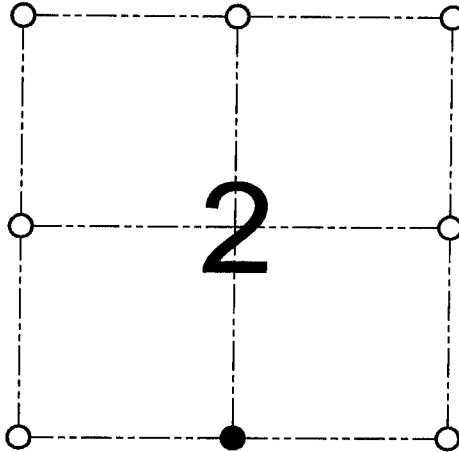
I, Larry L. Austin, do hereby certify that on the 12th day of October, 2000, I found evidence of the South 1/4 corner of Section 2, Town 3 North, Range 4 West, of the 4th Principal Meridian, and I re-established said corner according to the Wisconsin statutes as shown and described hereon.

Dated this 30th day of November, 2000

Larry L. Austin
Larry L. Austin S-1903



SEAL



● = CORNER LOCATION

SOUTH 1/4 CORNER OF
SECTION 2, T 3 N R 4 W
TOWN OF WATERLOO

HISTORY OF ORIGINAL CORNER ESTABLISHMENT:

Corner was originally set in 1833 by Lucius Lyon. In 1856 Overton found the original corner. No other record of the corner was found.

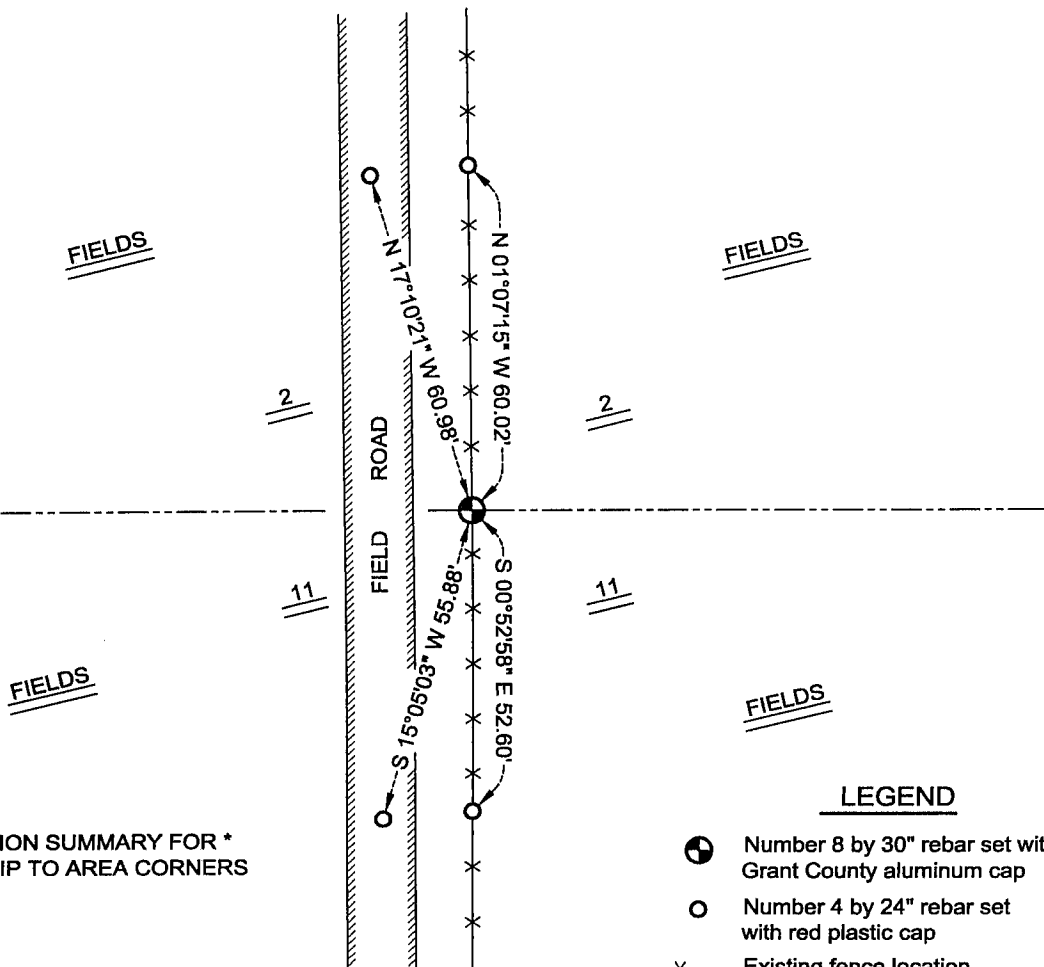
DESCRIPTION OF CORNER EVIDENCE FOUND:

I found an existing North-South fence which fit well with the proportioned location. I reset the corner at a straight line proportion. Verified this location using EDM & GPS traverse of the area.

DESCRIPTION OF CORNER AND WITNESS MONUMENTS, references and accessories used to perpetuate the original or re-established location of this corner

WITNESS TO THE CORNER LOCATION: TIM FAUVER & SHELBY BLINDERT & BOBBY SEDGWICK

SKETCH:



* SEE SECTION SUMMARY FOR *
RELATIONSHIP TO AREA CORNERS