

# GRANT COUNTY CERTIFIED LAND CORNER

CORNER NUMBER 18

**CERTIFICATE:**

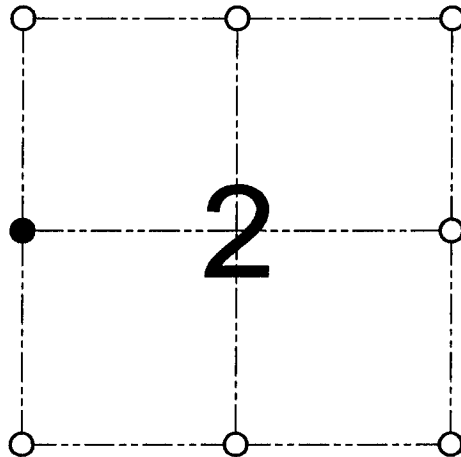
I, Larry L. Austin, do hereby certify that on the 11th day of October, 2000, I found no evidence of the West 1/4 corner of Section 2, Town 3 North, Range 4 West, of the 4th Principal Meridian, and I re-established said corner according to the Wisconsin statutes as shown and described hereon.

Dated this 30th day of November, 2000

*Larry L. Austin*  
Larry L. Austin S-1903



SEAL



● = CORNER LOCATION

WEST 1/4 CORNER OF  
SECTION 2, T 3-N R 4 W  
TOWN OF WATERLOO

**HISTORY OF ORIGINAL CORNER ESTABLISHMENT:**

Corner was originally set in 1833 by Lucius Lyon.  
No other record of the corner was found.

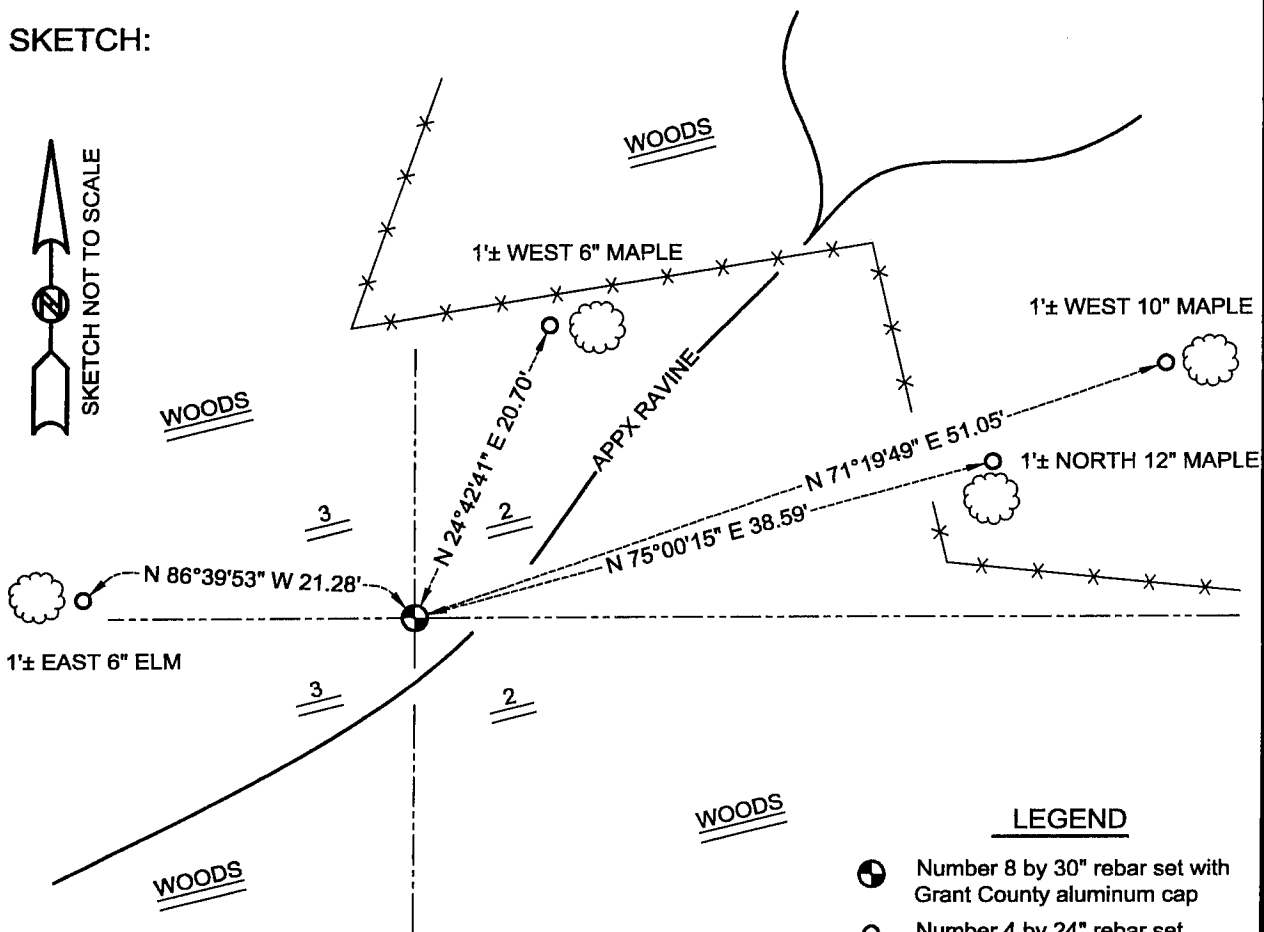
**DESCRIPTION OF CORNER EVIDENCE FOUND:**

I found no evidence to the location of the corner. I reset the corner by straight line proportioning between the Northwest and Southwest corners of Section 2. Verified this location using EDM & GPS methods.

**DESCRIPTION OF CORNER AND WITNESS MONUMENTS, references and accessories used to perpetuate the original or re-established location of this corner**

WITNESS TO THE CORNER LOCATION: TIM FAUVER & SHELBY BLINDERT & BOBBY SEDGWICK

**SKETCH:**



LEGEND

- Number 8 by 30" rebar set with Grant County aluminum cap
- Number 4 by 24" rebar set with red plastic cap
- x— Existing fence location

\* SEE SECTION SUMMARY FOR \*  
RELATIONSHIP TO AREA CORNERS