

RECEIVED MAR 26 1999

GRANT COUNTY CERTIFIED LAND CORNER

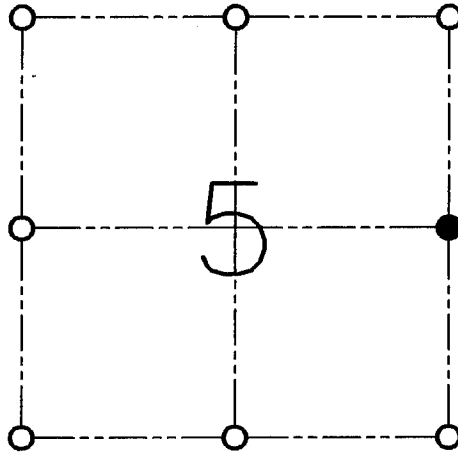
CORNER NO. 16

CERTIFICATE:

I, LARRY L. AUSTIN, DO HEREBY CERTIFY THAT ON TWENTY-SEVENTH DAY OF AUGUST, 1998, I FOUND NO EVIDENCE OF THE EAST 1/4 CORNER OF SECTION 5, TOWN 3 NORTH, RANGE 4 WEST, OF THE FOURTH PRINCIPAL MERIDIAN, AND I RE-ESTABLISHED SAID CORNER ACCORDING TO THE WISCONSIN STATUTES AS SHOWN AND DESCRIBED HEREON.

DATED THIS TWENTY-SEVENTH DAY OF SEPTEMBER, 1998

Larry L. Austin
LARRY L. AUSTIN S-1903



● = CORNER LOCATION

EAST 1/4 OF SECTION
T 3 N R 4 W
TOWN OF WATERLOO

HISTORY OF ORIGINAL CORNER ESTABLISHMENT:

CORNER WAS SET IN 1833 BY LUCIUS LYON.

DESCRIPTION OF CORNER EVIDENCE FOUND:

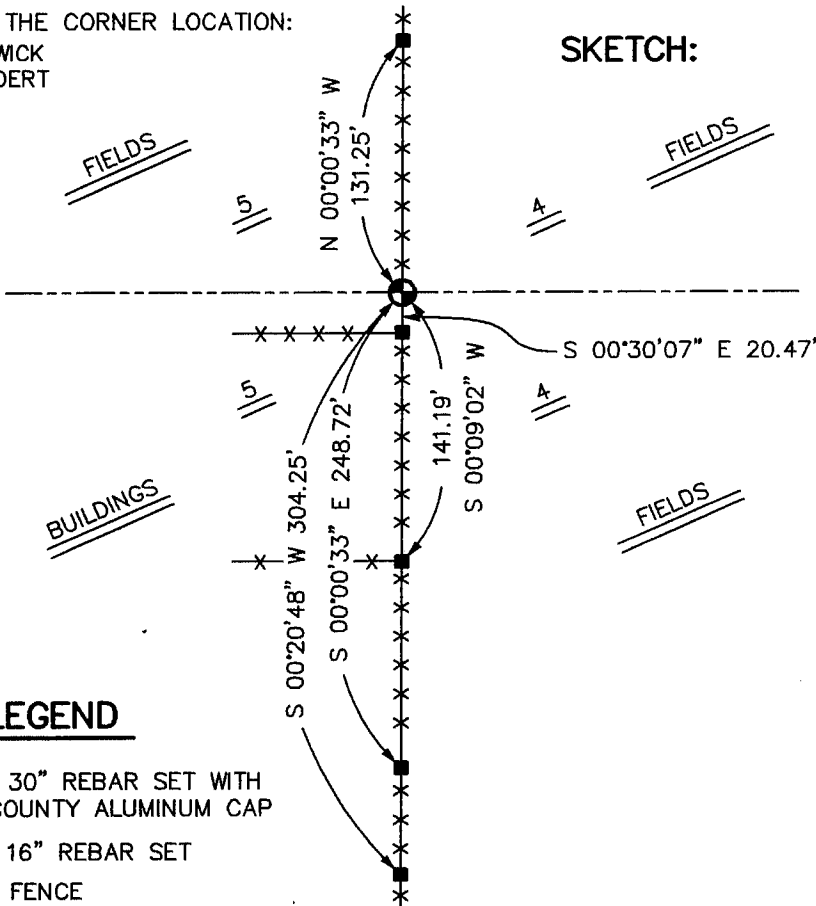
I ACCEPTED A NORTH / SOUTH FENCE FOR EASTING. THE NORthing WAS SET BY A SINGLE PROPORTION. VERIFIED THIS LOCATION USING E.D.M. AND G.P.S. METHODS.

DESCRIPTION OF CORNER AND WITNESS MONUMENTS, REFERENCES AND ACCESSORIES USED TO PERPETUATE THE ORIGINAL OR RE-ESTABLISHED LOCATION OF THIS CORNER:

WITNESS TO THE CORNER LOCATION:

BOBBY SEDGWICK
SHELBY BLINDERT

SKETCH:



LEGEND

- NO. 8 X 30" REBAR SET WITH GRANT COUNTY ALUMINUM CAP
- NO. 4 X 16" REBAR SET
- x-x- EXISTING FENCE