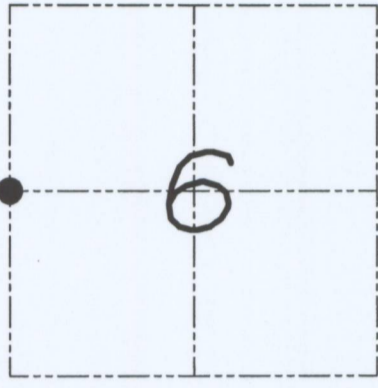


# U.S. PUBLIC LAND SURVEY MONUMENT RECORD

Section 6, Town 3 North Range 4 West, Town of Waterloo, Grant County, Wisconsin

## CERTIFICATE

I, Larry L. Austin, do hereby certify that the corner location on this record was determined by me and/or under my direct supervision and that this U.S. public land survey monument record is correct and complete to the best of my knowledge and belief.



● = CORNER LOCATION

*Larry L. Austin*  
Larry L. Austin, S-1903



## HISTORY OF CORNER

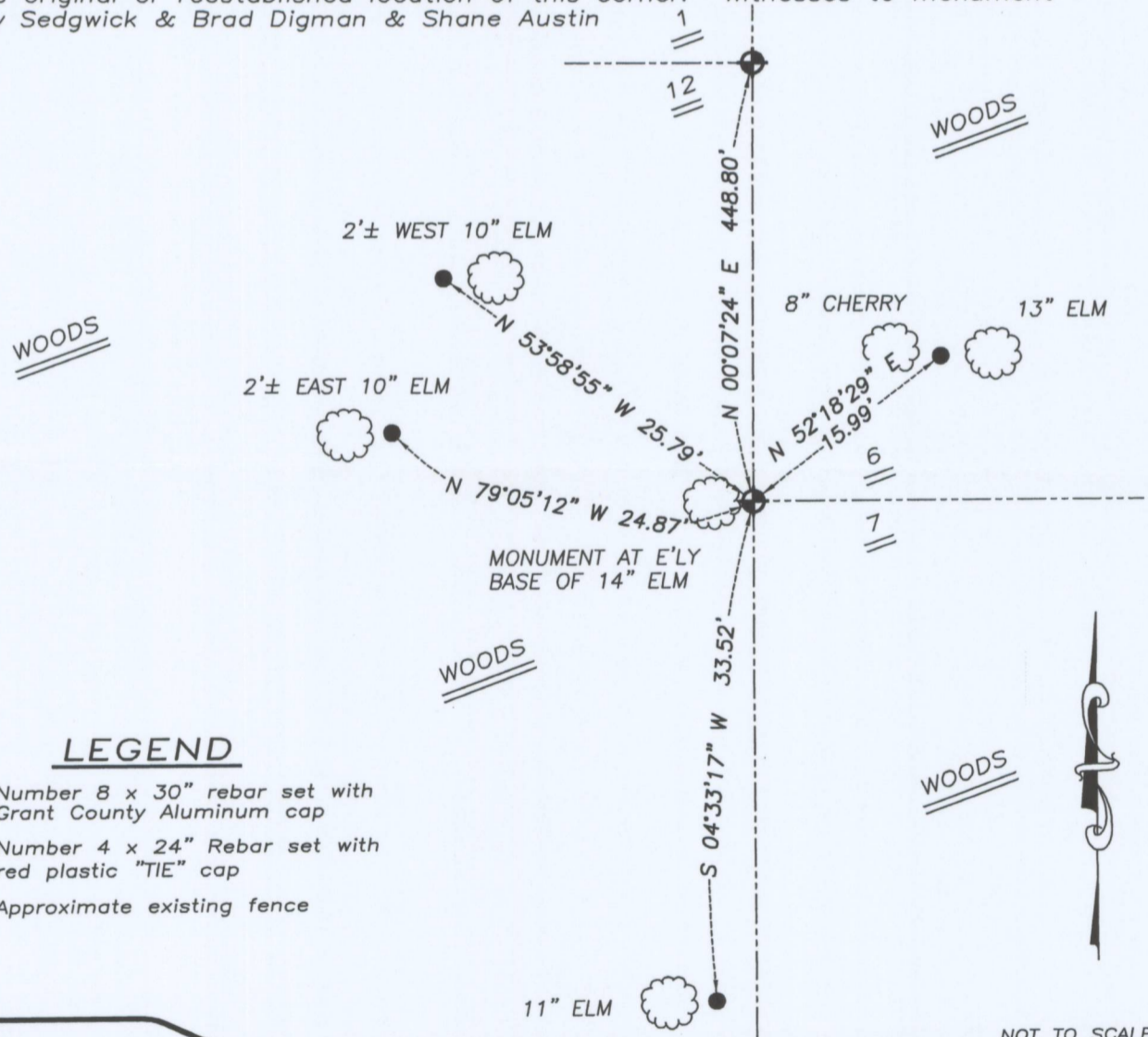
Corner was never originally set.  
No other record of the corner was found.

## CORNER EVIDENCE FOUND

I set the corner at the proportioned offset from the East 1/4 of Section 1, T3N R5W. Verified this location using EDM & GPS methods.

**DESCRIPTION OF CORNER AND WITNESS MONUMENTS**, references and accessories used to perpetuate the original or reestablished location of this corner. Witnesses to monument location Bobby Sedgwick & Brad Digman & Shane Austin

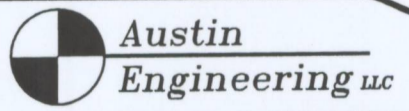
## SKETCH:



## LEGEND

- ◆ Number 8 x 30" rebar set with Grant County Aluminum cap
- Number 4 x 24" Rebar set with red plastic "TIE" cap
- x- Approximate existing fence

NOT TO SCALE



**Austin Engineering LLC**

4211 HWY 81 E, LANCASTER, WI 53813  
PHONE 608-723-6363 FAX 608-723-6702

JOB NUMBER 08S108  
FIELDBOOK: TDSR, 2710  
G:\T3NR4W\06  
H:\TIE\T3NR4W\14

DRAWN BY: SW AUSTIN  
APPROVED: LL AUSTIN