

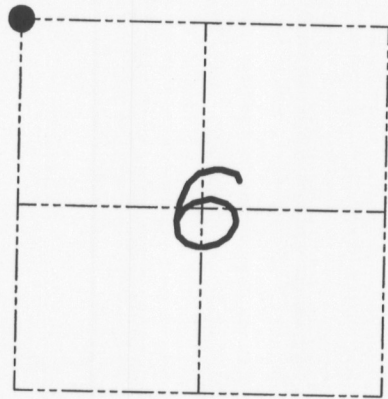
U.S. PUBLIC LAND SURVEY MONUMENT RECORD

Section 6, Town 3 North Range 4 West, Town of Waterloo, Grant County, Wisconsin

CERTIFICATE

I, Larry L. Austin, do hereby certify that the corner location on this record was determined by me and/or under my direct supervision and that this U.S. public land survey monument record is correct and complete to the best of my knowledge and belief.

Larry L. Austin
Larry L. Austin, S-1903



● = CORNER LOCATION

HISTORY OF CORNER

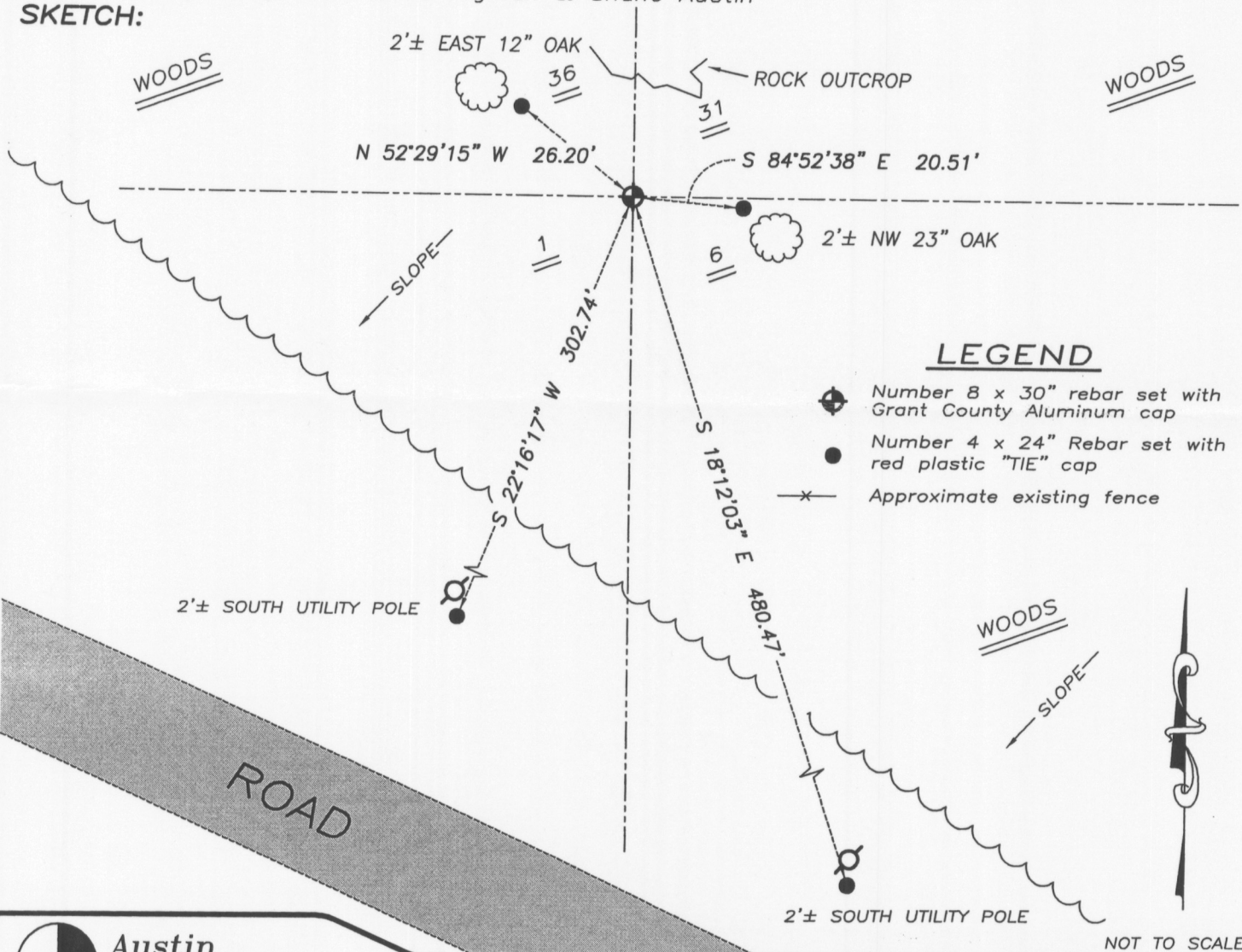
Corner was originally set in 1832 by Lyon. No other record of the corner was found.

CORNER EVIDENCE FOUND

I reset the corner proportionately between all adjoining corners in the area. This location fit well with all other corners. Verified this location using EDM & GPS methods.

DESCRIPTION OF CORNER AND WITNESS MONUMENTS, references and accessories used to perpetuate the original or re-established location of this corner. Witnesses to monument location Bobby Sedgwick & Brad Digman & Shane Austin

SKETCH:



LEGEND

- ⊕ Number 8 x 30" rebar set with Grant County Aluminum cap
- Number 4 x 24" Rebar set with red plastic "TIE" cap
- x- Approximate existing fence

NOT TO SCALE



Austin Engineering LLC

4211 HWY 81 E, LANCASTER, WI 53813
PHONE 608-723-6363 FAX 608-723-6702

JOB NUMBER 08S108
FIELDBOOK: TDSR, 2710
G:\T3NR4W\06
H:\TIE\T3NR4W\13

DRAWN BY: SW AUSTIN
APPROVED: LL AUSTIN