

GRANT COUNTY CERTIFIED LAND CORNER

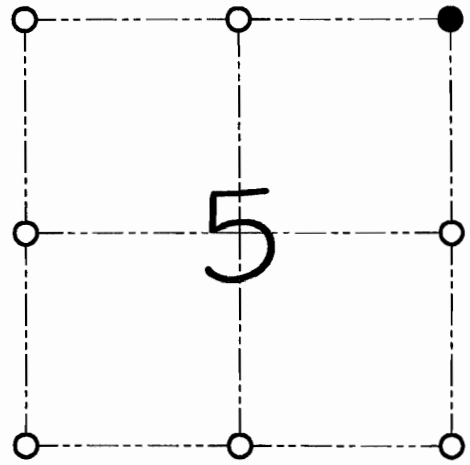
CORNER NUMBER 09

CERTIFICATE:

I, Larry L. Austin, do hereby certify that on the 26th day of April, 2000, I found evidence of the Northeast corner of Section 5, Town 3 North, Range 4 West, of the 4th Principal Meridian, and I re-established said corner according to the Wisconsin Statutes as shown and described hereon.

Dated this 15th day of May 2000

Larry L. Austin
 Larry L. Austin
 5203
 Lancaster, WI 53033
 4/30/09



● = CORNER LOCATION

NORTHEAST CORNER OF SECTION 05, T 3 N R 4 W TOWN OF WATERLOO

COUNTY COORDINATES
 N=495521.89 E=778909.87

SEAL

HISTORY OF ORIGINAL CORNER ESTABLISHMENT:

Corner was originally set in 1833 by Lucius Lyon.
 No other record of the corner was found.

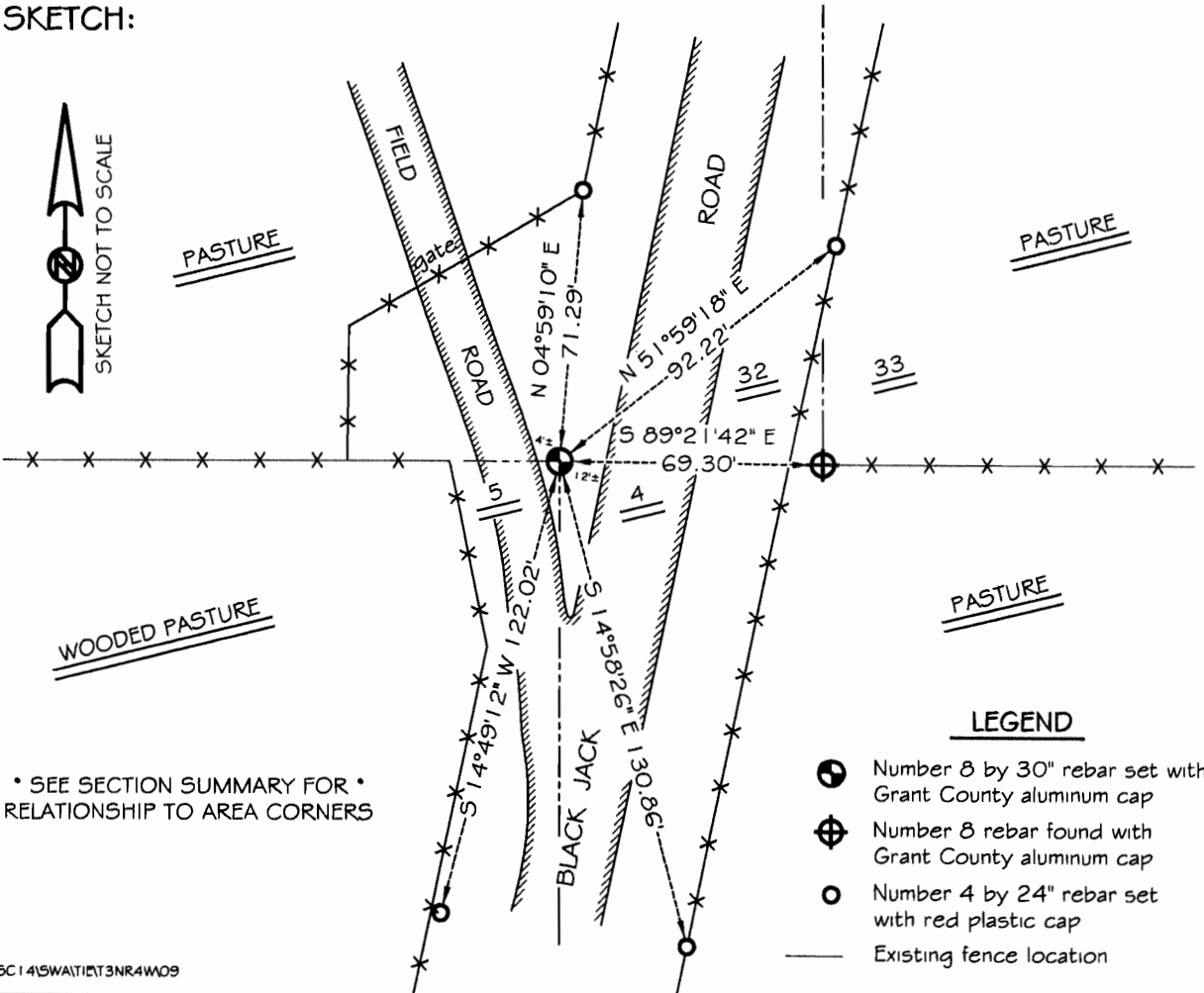
DESCRIPTION OF CORNER EVIDENCE FOUND:

I reset the corner at the recorded offset from the Southeast corner of Section 32.
 Verified this location using E.D.M. & G.P.S. methods.

DESCRIPTION OF CORNER AND WITNESS MONUMENTS, references and accessories used to perpetuate the original or re-established location of this corner

WITNESS TO THE CORNER LOCATION: SHANE AUSTIN & CODY AUSTIN

SKETCH:



GRANT COUNTY CERTIFIED LAND CORNER

CORNER NUMBER 09

CERTIFICATE:

I, Larry L. Austin, do hereby certify that on the 26th day of April, 2000, I found evidence of the Northeast corner of Section 5, Town 3 North, Range 4 West, of the 4th Principal Meridian, and I re-established said corner according to the Wisconsin statutes as shown and described hereon.

Dated this 15th day of May, 2000

Larry L. Austin
Larry L. Austin S-1903

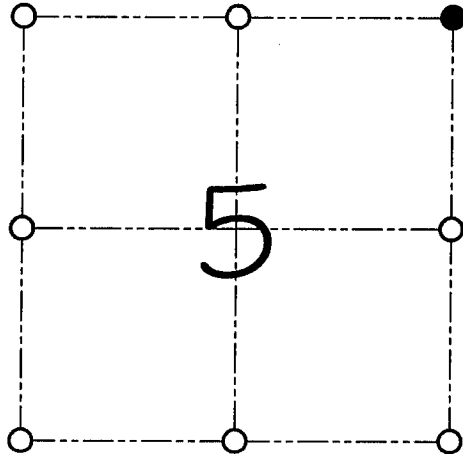


Grant County Coop.

N 495579.7

E 773717.3

SEAL



● = CORNER LOCATION

NORTHEAST CORNER OF
SECTION 05, T 3 N R 4 W
TOWN OF WATERLOO

HISTORY OF ORIGINAL CORNER ESTABLISHMENT:

Corner was originally set in 1833 by Lucius Lyon.
No other record of the corner was found.

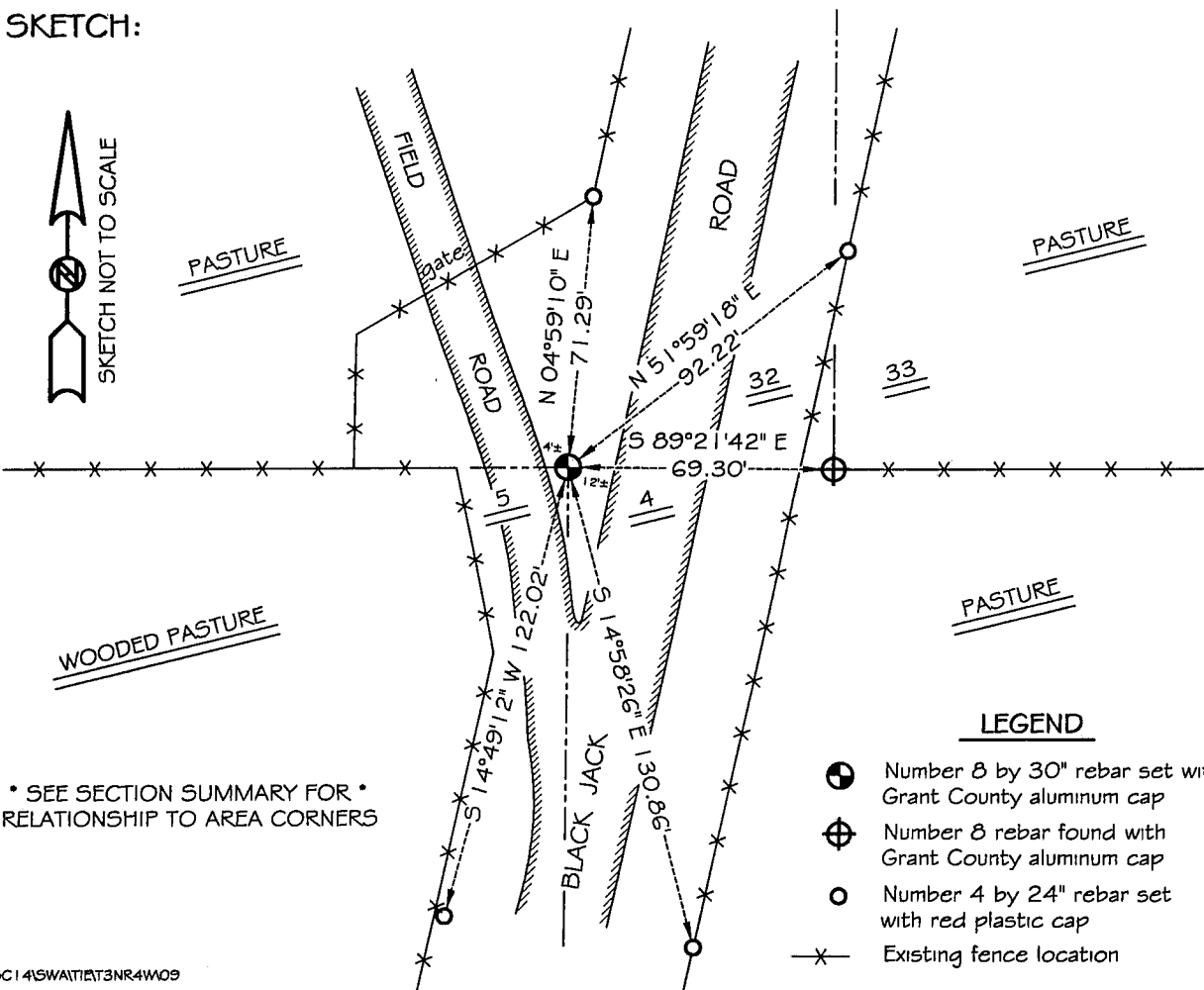
DESCRIPTION OF CORNER EVIDENCE FOUND:

I reset the corner at the recorded offset from the Southeast corner of Section 32.
Verified this location using E.D.M. & G.P.S. methods.

DESCRIPTION OF CORNER AND WITNESS MONUMENTS, references and accessories used to perpetuate the original or re-established location of this corner

WITNESS TO THE CORNER LOCATION: SHANE AUSTIN & CODY AUSTIN

SKETCH:



* SEE SECTION SUMMARY FOR *
RELATIONSHIP TO AREA CORNERS

LEGEND

- ⊕ Number 8 by 30" rebar set with Grant County aluminum cap
- ⊕ Number 8 rebar found with Grant County aluminum cap
- Number 4 by 24" rebar set with red plastic cap
- x- Existing fence location