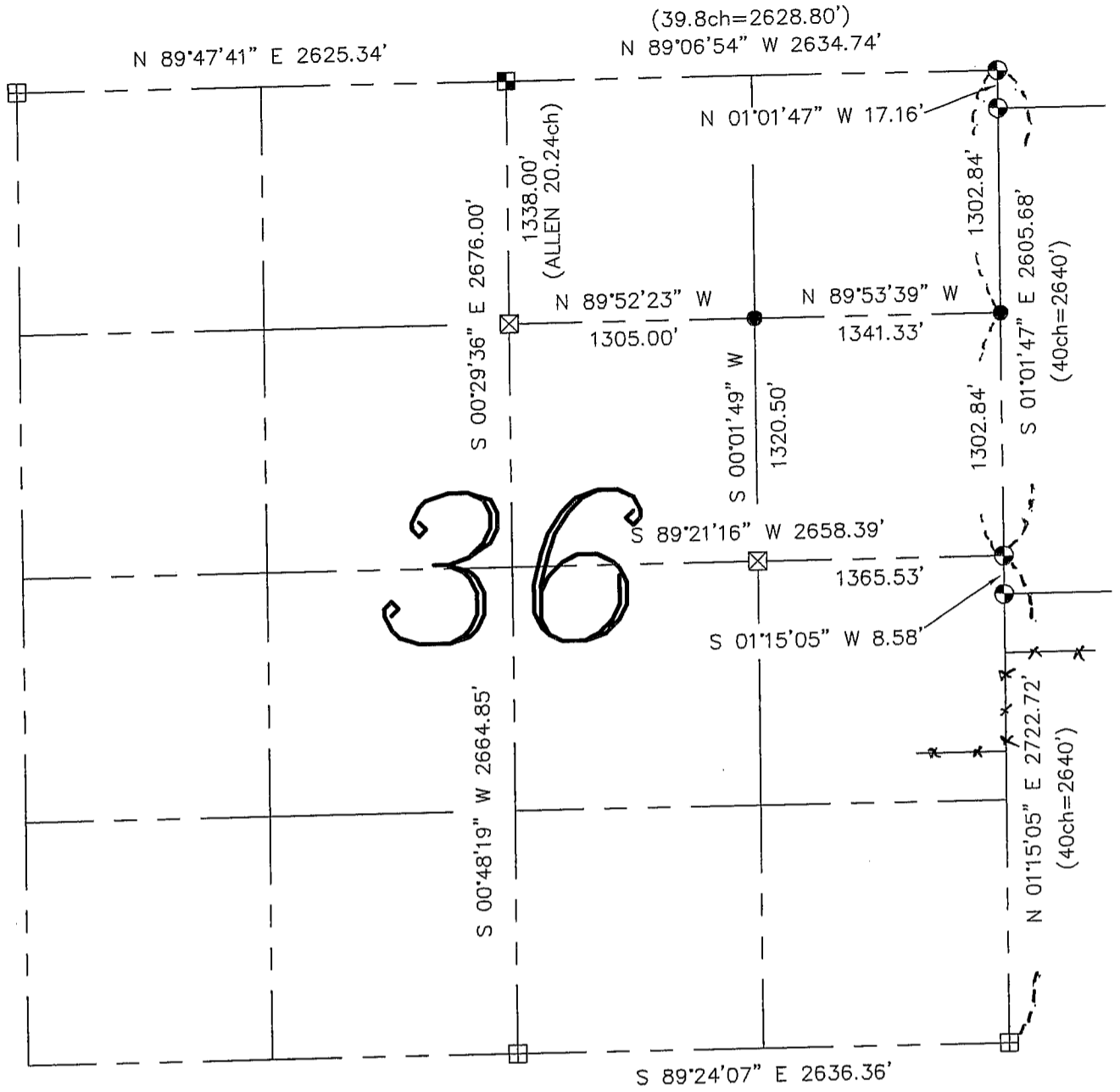


U.S. PUBLIC LAND SURVEY MONUMENT RECORD - GRANT COUNTY, WI

Summary of Section 36, Town 3 North, Range 3 West, Town of Potosi

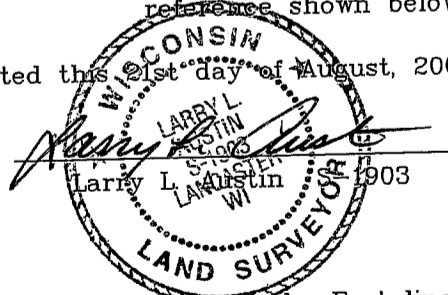


LEGEND

- ⊕ No. 8 rebar found with Grant County Aluminum Cap
- ⊙ No. 8 x 30" rebar set with Grant County Aluminum Cap - wt=2.67#/l.f.
- No. 6 x 24" rebar set with cap - wt=1.50 #/l.f.
- ⊞ Bernsten Cast Aluminum Monument found
- ⊠ Aluminum Monument found with Grant County Aluminum Cap
- ⊞ Stone monument found
- () Recorded as
- Approximate location of existing fence

Relationship of all section corners to other section corners shall be shown hereon by bearing and distance or grid coordinates. Bearing reference shown below.

Dated this 21st day of August, 2003



Bearings referenced to the East line of the Southeast Quarter of this Section, which is assumed to bear as shown hereon.

SKETCH NOT TO SCALE

AUSTIN ENGINEERING, LLC

4211 HWY 81 EAST, LANCASTER, WI 53813
PHONE 608-723-6363 FAX 608-723-6702

FIELDBOOK: TDSR, 2230

G: \T3NR3W\36

H: \TIE\T3NR2W\36SUM

CREW: BS-SB-SA-BD

DRAWN BY: SW AUSTIN

APPROVED: LL AUSTIN