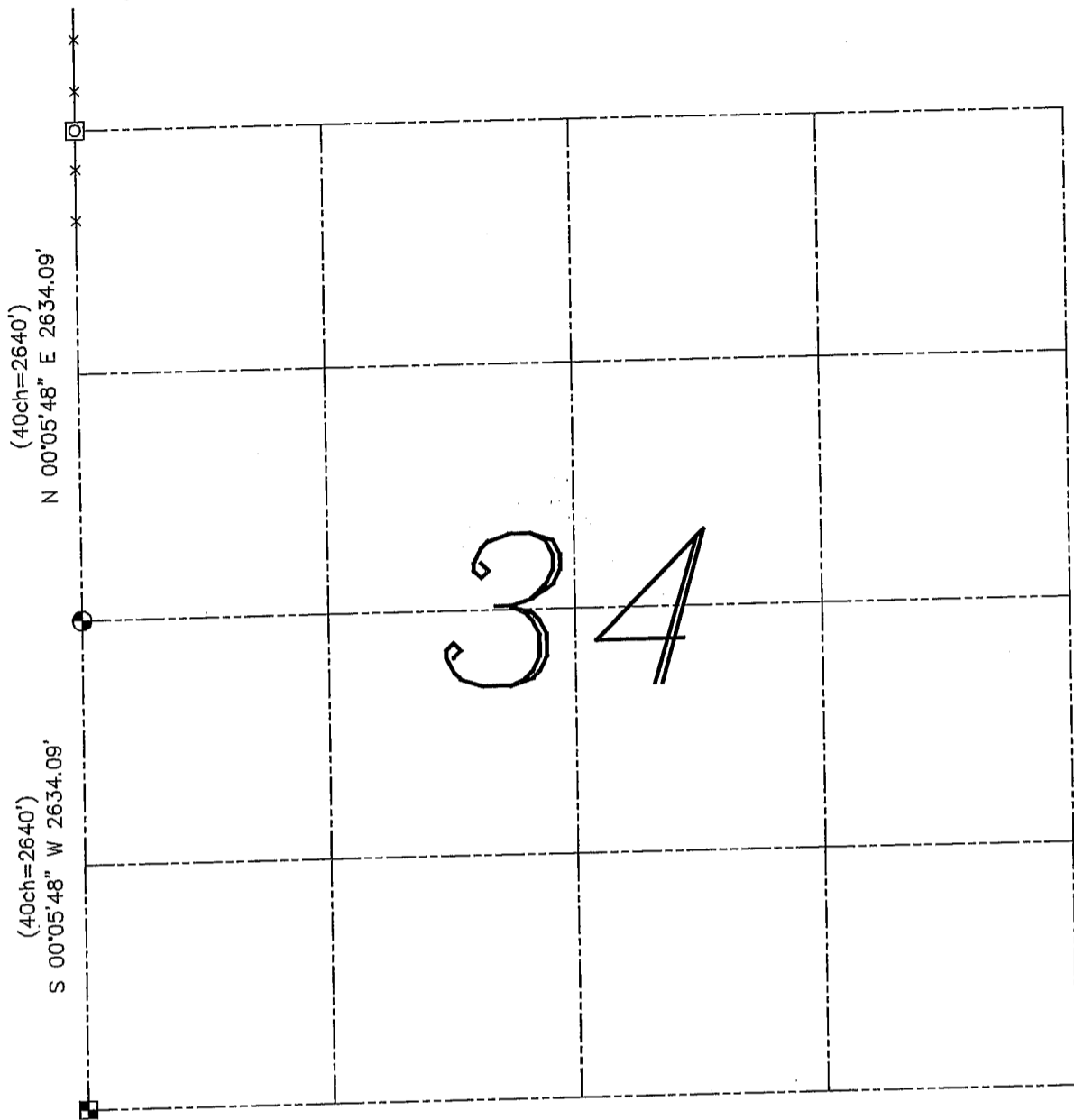


U.S. PUBLIC LAND SURVEY MONUMENT RECORD – GRANT COUNTY, WI

Summary of Section 34, Town 3 North, Range 3 West, Town of Potosi

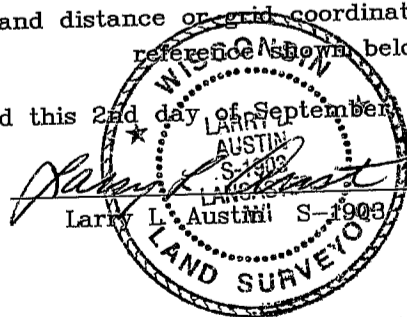


LEGEND

- No. 8 x 30" rebar set with Grant County Aluminum Cap – wt=2.67#/l.f.
- No. 8 rebar found
- DOT Aluminum Monument found

Relationship of all section corners to other section corners shall be shown hereon by bearing and distance or grid coordinates. Bearing reference is shown below.

Dated this 2nd day of September, 2003



Bearings referenced to the West line of the NW 1/4 of this Section, which is assumed to bear as shown hereon.

SKETCH NOT TO SCALE